

# Product Catalogue for **BLÜCHER® Shower Drains**

BLÜCHER® Drain Domestic, BLÜCHER® Drain Multi, BLÜCHER® WaterLine



**BLÜCHER®**

A **WATTS** Brand



## Safe solutions

BLÜCHER® stainless steel drainage products are installed in almost any kind of construction project, from multi-storey apartments and food processing factories to hospitals and on board prestigious cruise liners. We have specialised our competencies within four main segments:

Housing

Commercial

Industrial

Marine

The BLÜCHER® drainage system is a modular system providing numerous possible product combinations.

### **BLÜCHER® Drain**

Floor drains for light- to heavy-duty flow and load applications.

### **BLÜCHER® Channel**

Standard, modular or customised channels and kitchen channels for all flow and load applications.

### **BLÜCHER® EuroPipe**

Push-fit drainage pipe-work system for soil, waste and rainwater.

### **Customised solutions**

To ensure that any drainage requirement can be fulfilled we are always ready to solve your special request.

## Strong products

All BLÜCHER® drainage products are produced in stainless steel grade AISI 304 or optionally grade AISI 316L. This material is ideally suitable for high-quality drainage systems:

- Fire resistant
- High strength - low weight
- Environmentally friendly

Furthermore it is corrosion resistant, resistant to impacts and thermal stress and requires little maintenance.

In the BLÜCHER® drainage products the inherent qualities of stainless steel are enhanced by careful product design resulting in:

- Long product life expectancy
- Excellent hygienic properties
- Easy installation
- Whole-life cost advantages
- Excellent flow capacities

All BLÜCHER® products are chemically descaled and passivated in order to enhance the natural corrosion resistance and provide a uniform matt-silver surface finish.

All stainless steel components are manufactured from recycled materials and are 100% recyclable.

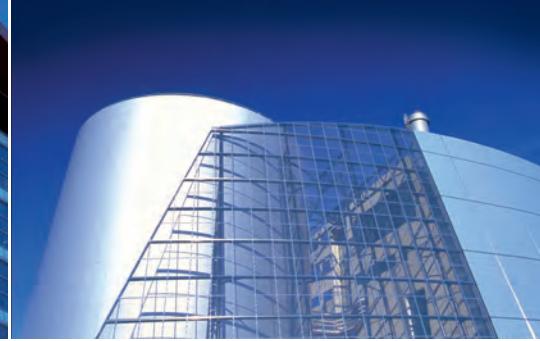
## Danish quality

Founded in Denmark in 1965, BLÜCHER has developed into a leading manufacturer of stainless steel drainage systems. Today, BLÜCHER is an international company with subsidiaries and representations worldwide. The BLÜCHER Group employs more than 350 staff worldwide.

Customers all over the World appreciate our know-how, dedicated service and common sense.

Through quality stainless steel products and drainage solutions that lead waste water away, BLÜCHER is committed to the promise of keeping up the flow.

The BLÜCHER® drainage products are manufactured in Denmark using the most modern production methods and in accordance with the internationally recognised quality standard ISO 9001. Furthermore, the most respected classification societies endorse the BLÜCHER® drainage products worldwide.



## **Selected references around the World**

Hospitals, schools, commercial kitchens, the food and beverage industry and the pharmaceutical industry are among the customers that benefit from BLÜCHER stainless steel drainage systems.

### **Housing**

BLÜCHER® stainless steel floor drains and pipe system are used all over the World in Scandinavian-style wet bathrooms in single and multi-storey buildings.

### **Commercial**

Queen Mary Hospital, Hvidovre hospital, Princess Alexandra Hospital, Blackpool Victoria Hospital, Queen Elizabeth Hospital, St. James Hospital, University College London Hospital, Sportcentrum Fitness First, Czàsar Swimming Pool, Sports & Aquatic Centre, International Grammar School, Collège Bellevue, Elite University, Universitat Pompeu Fabra, Augustenborgskolan, Canadian International School, North Texas State University, Elderly Citizens Home Adelaide, Old Peoples Home Budapest, Maryland State Prison, Uppsala Polishus, Oslo Opera, Hilton Hotels, Hotel Marriot, Sofitel, Novotel, The Ritz Carlton Bahrain, McDonalds, Burger King, Pizza Hut, Le Louvre, Bahrain National Museum, Ministère de L'Industri, State Library of Victoria, Royal Danish Theatre, Copenhagen Zoo, Hong Kong Disneyland, Dubai Mall, IKEA, Tesco, Coop, Metro, Carrefour, Lidl, Woolworths, Gardamoen Oslo, Copenhagen Airport, Heathrow Airport, Barcelona Airport, New Athens Airport, Orly Airport, Arlanda Airport, Helsinki Airport.

### **Industrial**

Pfizer, GSK, Astra Zeneca, Johnson & Johnson, Aventis, Kraft, Nestlé, Danish Crown, Daloon, Tulip, Knorr, Singapore Airport Catering, Ahlgreens, Estrella, Kelloggs, CocaCola, Pepsi, Heineken, Carlsberg, Whitbread Breweries, Budweiser, Tropicana Juice Processing, Absolut Vodka. Nestlé, Arla Food, Danone, Unilever, Almarai Dairy. Mercedes, Renault, L'Oreal, Sony, BASF, 3M, IBM World Headquarters, Honeywell, Colgate Palmolive, Royal Copenhagen, Hella.

### **Marine**

Freedom of the Seas, Liberty of the Seas, Norwegian Star, Color Magic, Pride of Hawaii, Galaxy, AIDA Diva, Celebrity Solstice. MY Platinum (Dubai Ports Authority), M/S Caravelle (Jade Yachts), Safari (Blohm & Voss) Lady Haya (Pesaro), Pelorus (Lürssen Kröger Werft), Oceanco Kusch Yachts Agentur.  
3 vehicle carriers and 10 container ships (MHI Japan), 6 container vessels (AP Møller), 35 commercial vessels (Mawai China), 24 container vessels (Dalian Shipyards China).  
Agbami Off Shore, Consafe-Aberdeen Oil Platform Bingo I & Bingo II Offshore Oil Rigs. Auxillary vessel (British Navy), 5 frigates (Norwegian Navy), 2 logistics vessels (Danish Navy), 2 survey vessels Dutch Navy.

## The BLÜCHER® range comprises:

### BLÜCHER® Drain Domestic



Shower drains for concrete/tiled and vinyl floors

- SQUARE, TRIO and CIRCLE
- Removable and easy-to-clean water trap
- Range of design gratings

WaterLine shower channels for concrete/tiled and vinyl floors

- For installation against wall(s) or away from walls
- Range of design gratings

### BLÜCHER® Drain Industrial



Industrial drains for concrete/tiled, resin or vinyl floors

- SQUARE and CIRCLE
- Removable and easy-to-clean water trap
- Large range of gratings for all applications and load classes

### BLÜCHER® EuroPipe



Push-fit drainage pipes and fittings, Ø40-Ø315 mm

- Low weight, high strength
- For vacuum and gravity systems
- RS82 renovation system (see separate catalogue)

## BLÜCHER® Channel



Channels and kitchen channels for concrete/tiled, resin and vinyl floors

- Removable and easy-to-clean water trap
- Large range of gratings for all applications and load classes

## BLÜCHER® HygienicPro



Point and linear drains for applications with strict requirements to hygiene and high capacity, e.g. production areas in the food and beverage industry

- Quickly leads away solid waste, even at small water volumes
- No corners and cavities inside thus preventing bacterial growth
- Less production stops for emptying and cleaning filter baskets

## BLÜCHER® Drain Roof



Roof drainage system for single-ply membrane or bitumen in gravity and vacuum systems

- Roof drains and BLÜCHER® EuroPipe pipework system
- Easy installation
- Long product life expectancy

BLÜCHER® product catalogues can be ordered from our customer center or downloaded from [www.blucher.com](http://www.blucher.com)







## BLÜCHER® DRAIN DOMESTIC

Presentation of shower drains. . . . .	1
Shower drains SQUARE for concrete and tiled floors without membrane. . . . .	4
Shower drains SQUARE for concrete and tiled floors with liquid membrane. . . . .	9
Shower drains SQUARE for concrete and tiled floors with liquid & sheet membranes. . . . .	15
Shower drains SQUARE for concrete and tiled floors with liquid membrane and Lewis® sheeting. . . . .	16
Shower drains SQUARE for concrete and tiled floors with sheet membrane. . . . .	17
Shower drains TRIO for concrete and tiled floors without membrane. . . . .	19
Shower drains TRIO for concrete and tiled floors with liquid membrane. . . . .	22
Shower drains TRIO for concrete and tiled floors with sheet membrane. . . . .	28
Shower drains CIRCLE for vinyl floors. . . . .	30
Upper parts SQUARE for concrete and tiled floors. . . . .	35
Upper parts TRIO for concrete and tiled floors. . . . .	38
Upper parts CIRCLE for resin floors. . . . .	40
Upper parts CIRCLE for vinyl floors. . . . .	42
Lower parts for shower drains - without membrane flange. . . . .	44
Accessories for shower drains. . . . .	46
Presentation of MULTI drains. . . . .	70
Mounting sets MULTI SQUARE for concrete and tiled floors. . . . .	73
Mounting sets MULTI TRIO for concrete and tiled floors. . . . .	82
Mounting sets MULTI CIRCLE for resin floors. . . . .	85
Mounting sets MULTI CIRCLE for vinyl floors. . . . .	86
Mounting sets MULTI LINE for concrete and tiled floors. . . . .	88
Lower parts MULTI. . . . .	89
Accessories for mounting sets. . . . .	97
Presentation of shower channel WaterLine. . . . .	103
Shower channel WaterLine for concrete and tiled floors without membrane. . . . .	106
Shower channel WaterLine for concrete and tiled floors with liquid membrane. . . . .	107
Shower channel WaterLine for concrete and tiled floors with sheet membrane. . . . .	108
Shower channel WaterLine for vinyl floors. . . . .	109
Accessories for WaterLine shower channels. . . . .	110





## Drains for housing and commercial applications



### Shower drains For tiled and vinyl floors Square, triangular or circular

#### Applications

For tiled and vinyl floors in:

- Private housing bathrooms
- Toilets and showers in hotels, hospitals, fitness centres, etc.

#### Details

- Square, triangular or circular frame
- Brushed grain finish
- Low frame height
- Grate with starlock screw-system
- Stainless steel AISI304/EN 1.4301 or AISI316L/EN 1.4404

#### Variants

- Side inlets  $\varnothing 32/40$  mm
- Vertical or horizontal outlet
- Flange for liquid or sheet membrane
- Adjustable height, rotation and tilt

#### Options

- Removable water trap
- Design gratings in 3 shapes and 6 designs

#### Series

- Series 100 without flange for concrete and tiled floors
- Series 200 for vinyl floors
- Series 300 with liquid or sheet membrane flange for concrete and tiled floors

## Complete drains

### Concrete and tiles without membrane



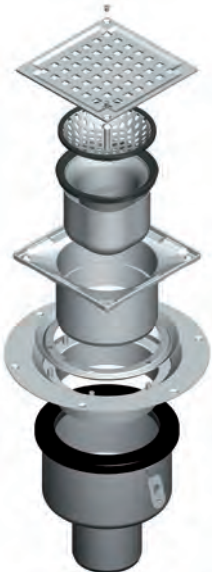
- Standard grating VIENNA included
- Optional design gratings available
- Optional filter basket
- Optional removable water trap
- Adjustable upper part
- Lower part with or without side inlets

### Concrete and tiles with liquid membrane



- Standard grating VIENNA included
- Optional design gratings available
- Optional filter basket
- Optional removable water trap
- Adjustable upper part
- Flange
- Lower part with or without side inlets

### Concrete and tiles with sheet membrane



- Standard grating VIENNA included
- Optional design gratings available
- Optional filter basket
- Optional removable water trap
- Adjustable upper part
- Adjustable clamping flange
- Lower part with or without side inlets

### Vinyl



- Standard grating VIENNA included
- Optional design gratings available
- Clamping ring
- Optional inlet deflector
- Optional filter basket
- Optional water trap
- Adjustable upper part
- Lower part with or without side inlets

### Complete drains

#### Drain

Adjustable 2-part drains or non-adjustable 1-part drains

#### Grating

Standard VIENNA grating is included. Optional design gratings are not included - to be ordered separately

#### Water trap

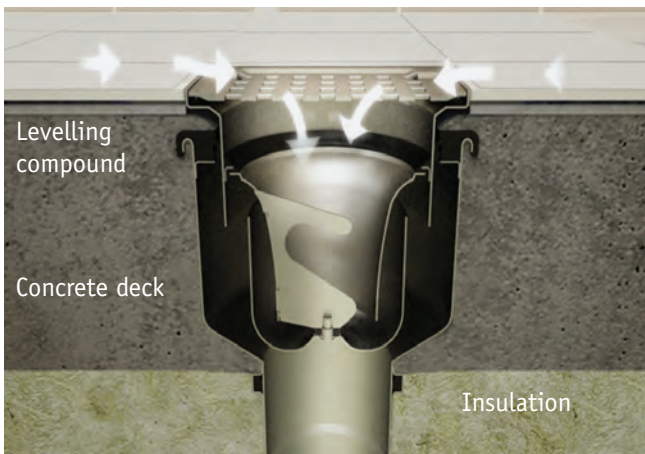
Removable water trap not included - to be ordered separately.

#### Other accessories

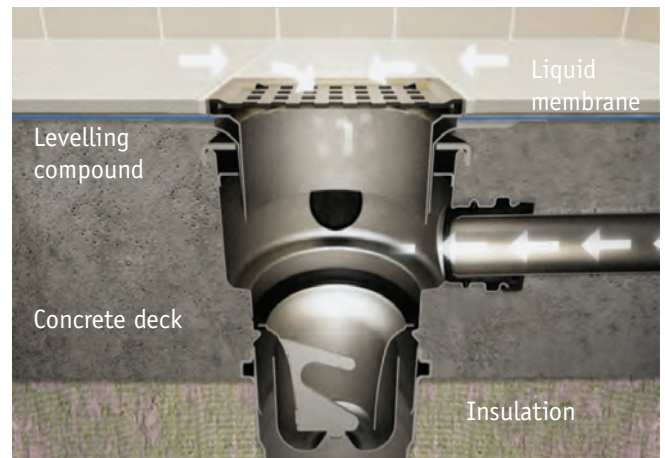
Other accessories such as filter basket not included - to be ordered separately. Most drains with side inlets come with inlet deflector.

## Installation examples

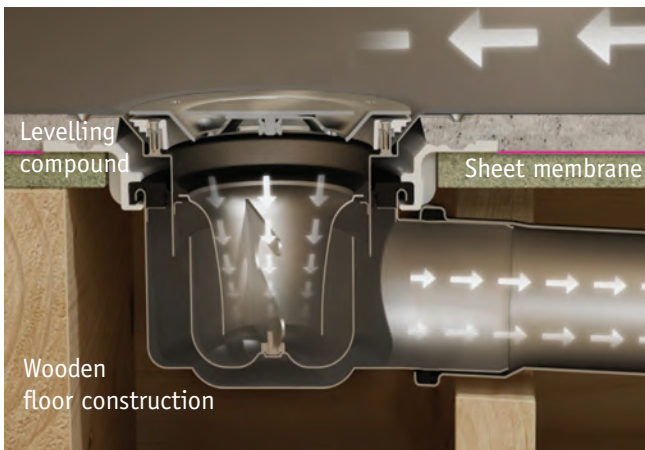
Concrete and tiles without membrane



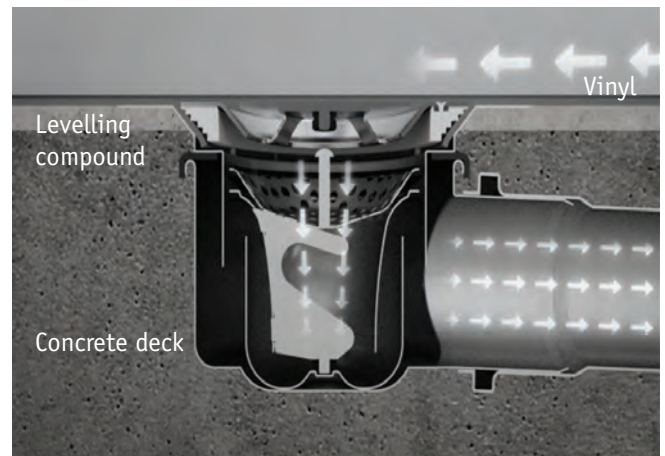
Concrete and tiles with liquid membrane



Concrete and tiles with sheet membrane



Vinyl



Two-part removable water trap



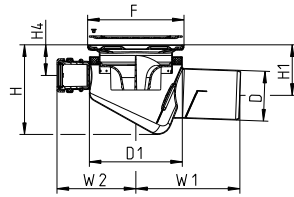
Due to its design the water trap has unique self-cleansing properties, and the slanted handle does not gather hair or dirt. Separable to facilitate cleaning. After cleaning, assemble the two parts by screwing them together tightly.

Installation videos available at [www.blucher.com](http://www.blucher.com)

without membrane

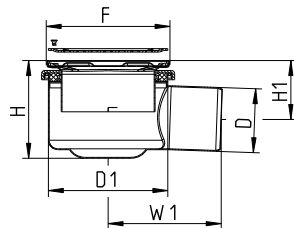
**ADJUSTABLE SHOWER DRAIN SQUARE, LOW MODEL TYPE 102**

WITH SIDE INLETS AND INTEGRATED WATER TRAP



Type no.	EAN no.	D	D1	F	H	H1	H4	W1	W2
102.300.075	5705499118285	75	140	145x145	128-145	69-86	39-56	157	119

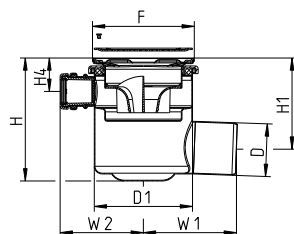
**ADJUSTABLE SHOWER DRAIN SQUARE TYPE 110**



Type no.	EAN no.	D	D1	F	H	H1	W1
110.300.050	5705499124255	50	140	145x145	115-145	81-111	128
110.300.075	5705499104844	75	140	145x145	115-145	69-99	133

**ADJUSTABLE SHOWER DRAIN SQUARE TYPE 111**

WITH SIDE INLETS



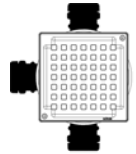
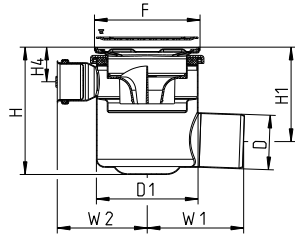
Type no.	EAN no.	D	D1	F	H	H1	H4	W1	W2
111.300.075	5705499105636	75	140	145x145	175-185	130-140	48-58	133	119



without membrane

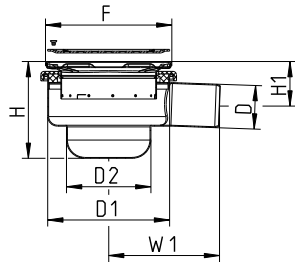
**ADJUSTABLE SHOWER DRAIN SQUARE TYPE 111**

WITH SIDE INLETS 50 MM



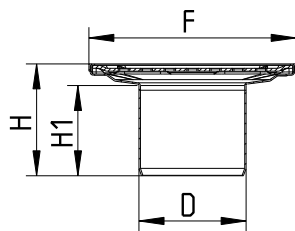
Type no.	EAN no.	D	D1	F	H	H1	H4	W1	W2
111.303.075	5705499123708	75	140	145x145	175-185	130-140	48-58	133	124

**ADJUSTABLE SHOWER DRAIN SQUARE, LOW MODEL TYPE 114**



Type no.	EAN no.	D	D1	F	H	H1	W1	D2
114.300.050	5705499118056	50	140	145x145	111-121	51-61	127	97

**SHOWER DRAIN SQUARE, LOW MODEL TYPE 140**

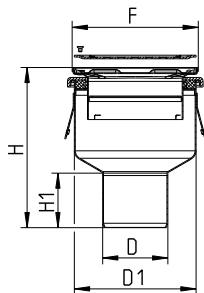


Type no.	EAN no.	D	F	H	H1
140.300.040	5705499107449	40	145x145	65	49
140.300.050	5705499106510	50	145x145	74	58
140.300.075	5705499104868	75	145x145	78	63

Not for removable water trap.

without membrane

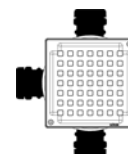
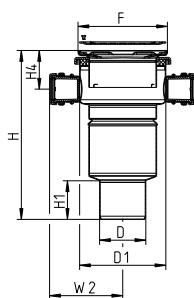
**ADJUSTABLE SHOWER DRAIN SQUARE TYPE 150**



Type no.	EAN no.	D	D1	F	H	H1
150.300.050	5705499124279	50	140	145x145	189-219	58
150.300.075	5705499104882	75	140	145x145	185-215	63
150.300.110	5705499104905	110	140	145x145	152-182	79

**ADJUSTABLE SHOWER DRAIN SQUARE TYPE 151**

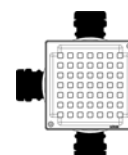
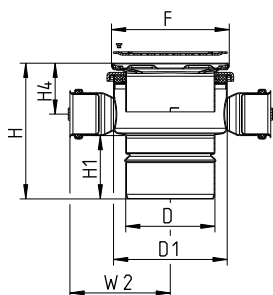
WITH SIDE INLETS



Type no.	EAN no.	D	D1	F	H	H1	H4	W2
151.300.075	5705499104929	75	140	145x145	274-304	63	63-93	119
151.300.110	5705499104943	110	140	145x145	167-197	79	63-93	119

**ADJUSTABLE SHOWER DRAIN SQUARE TYPE 151**

WITH SIDE INLETS 50 MM

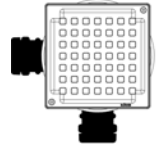
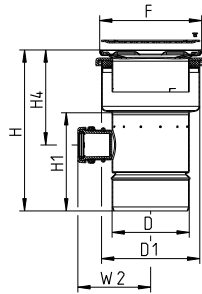


Type no.	EAN no.	D	D1	F	H	H1	H4	W2
151.303.110	5705499123715	110	140	145x145	167-197	79	63-93	124

without membrane

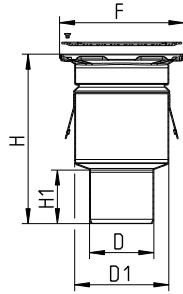
**ADJUSTABLE SHOWER DRAIN SQUARE TYPE 155**

WITH SIDE INLETS



Type no.	EAN no.	D	D1	F	H	H1	H4	W2
155.300.110	5705499123838	110	140	145x145	230-260	140	136-166	104

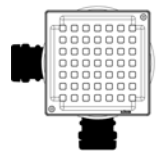
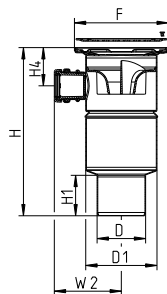
**SHOWER DRAIN SQUARE TYPE 160**



Type no.	EAN no.	D	D1	F	H	H1
160.300.050	5705499123586	50	110	145x145	193	60
160.300.075	5705499104967	75	110	145x145	198	63
160.300.110	5705499104981	110	110	145x145	91	79

**SHOWER DRAIN SQUARE TYPE 161**

WITH SIDE INLETS

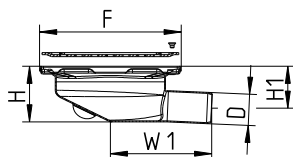


Type no.	EAN no.	D	D1	F	H	H1	H4	W2
161.300.075	5705499105001	75	110	145x145	260	63	59	104
161.300.110	5705499105025	110	110	145x145	153	141	59	104



without membrane

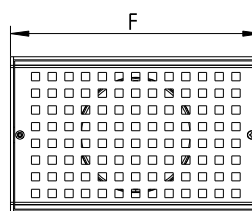
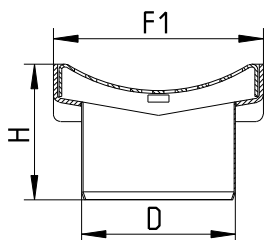
**MINI DRAIN SQUARE TYPE 181**



Type no.	EAN no.	D	F	H	H1	W1
181.300.032	5705499107364	32	145x145	57	43	104

Not for removable water trap. Adaptor for D=40mm included

**DRAIN SQUARE FOR SWIMMING-POOL SIDE TYPE 445**

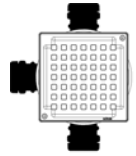
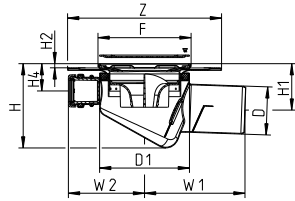


Type no.	EAN no.	D	F	F1	H
445.150.110 S	5705499113990	110	240	150	97

with liquid membrane

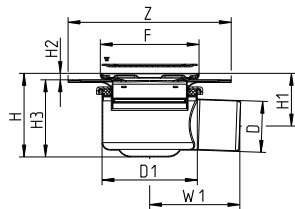
**ADJUSTABLE SHOWER DRAIN SQUARE, LOW MODEL TYPE 302**

WITH SIDE INLETS AND INTEGRATED WATER TRAP



Type no.	EAN no.	D	D1	F	Z	H	H1	H2	H4	W1	W2
302.300.075	5705499118308	75	140	145x145	Ø240	132-162	72-102	6.5-21	43-73	156	119

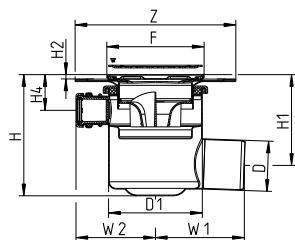
**ADJUSTABLE SHOWER DRAIN SQUARE TYPE 310**



Type no.	EAN no.	D	D1	F	Z	H	H1	H2	H3	W1
310.300.050	5705499124347	50	140	145x145	Ø240	120-150	87-117	6.5-21	113-128	128
310.300.075	5705499105261	75	140	145x145	Ø240	120-150	75-105	6.5-21	113-128	133

**ADJUSTABLE SHOWER DRAIN SQUARE TYPE 311**

WITH SIDE INLETS

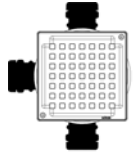
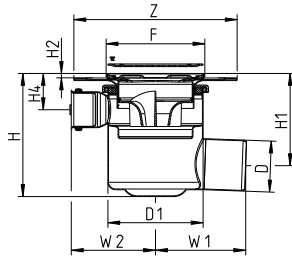


Type no.	EAN no.	D	D1	F	Z	H	H1	H2	H4	W1	W2
311.300.075	5705499105285	75	140	145x145	Ø240	181-211	136-166	6.5-21	53-83	133	119

with liquid membrane

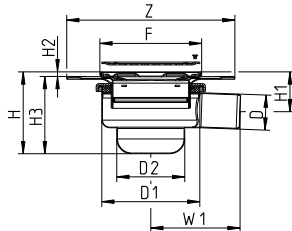
**ADJUSTABLE SHOWER DRAIN SQUARE TYPE 311**

WITH SIDE INLETS 50 MM



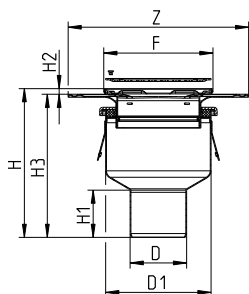
Type no.	EAN no.	D	D1	F	Z	H	H1	H2	H4	W1	W2
311.303.075	5705499123739	75	140	145x145	Ø240	181-211	136-166	6.5-21	53-83	133	124

**ADJUSTABLE SHOWER DRAIN SQUARE, LOW MODEL TYPE 314**



Type no.	EAN no.	D	D1	F	Z	H	H1	H2	H3	W1	D2
314.300.040	5705499113969	40	140	145x145	Ø240	117-147	52-82	6.5-21	110-125	125	97
314.300.050	5705499118094	50	140	145x145	Ø240	117-147	57-87	6.5-21	110-125	127	97

**ADJUSTABLE SHOWER DRAIN SQUARE TYPE 350**

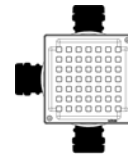
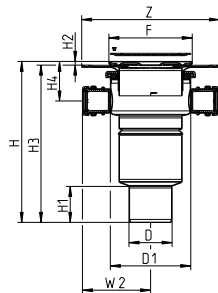


Type no.	EAN no.	D	D1	F	Z	H	H1	H2	H3
350.300.050	5705499124361	50	140	145x145	Ø240	194-224	58	6.5-21	188-203
350.300.075	5705499105346	75	140	145x145	Ø240	190-220	63	6.5-21	184-199
350.300.110	5705499105360	110	140	145x145	Ø240	158-188	79	6.5-21	152-167

with liquid membrane

**ADJUSTABLE SHOWER DRAIN SQUARE TYPE 351**

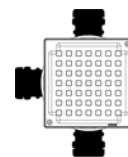
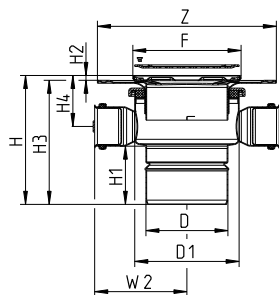
WITH SIDE INLETS



Type no.	EAN no.	D	D1	F	Z	H	H1	H2	H3	H4	W2
351.300.075	5705499105384	75	140	145x145	Ø240	280-310	63	6.5-21	274-289	69-99	119
351.300.110	5705499105407	110	140	145x145	Ø240	173-203	79	6.5-21	167-182	69-99	119

**ADJUSTABLE SHOWER DRAIN SQUARE TYPE 351**

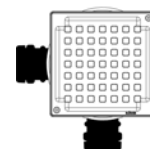
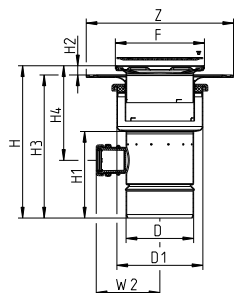
WITH SIDE INLETS 50 MM



Type no.	EAN no.	D	D1	F	Z	H	H1	H2	H3	H4	W2
351.303.110	5705499124408	110	140	145x145	Ø240	173-203	79	6.5-21	167-182	69-99	124

**ADJUSTABLE SHOWER DRAIN SQUARE TYPE 355**

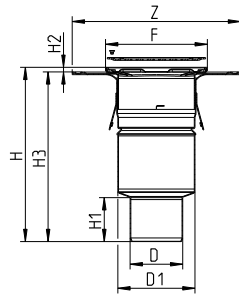
WITH SIDE INLETS



Type no.	EAN no.	D	D1	F	Z	H	H1	H2	H3	H4	W2
355.300.110	5705499107654	110	140	145x145	Ø240	235-295	140	6.5-21	229-274	141-201	104

with liquid membrane

**ADJUSTABLE SHOWER DRAIN SQUARE TYPE 360**

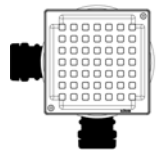
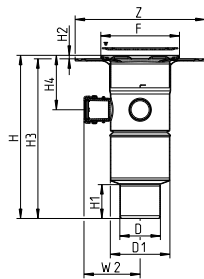


Type no.	EAN no.	D	D1	F	Z	H	H1	H2	H3
360.300.050	5705499124385	50	110	145x145	Ø240	244-259	60	6.5-21	237
360.300.075	5705499105506	75	110	145x145	Ø240	249-264	63	6.5-21	242
360.300.110	5705499105520	110	110	145x145	Ø240	142-157	-	6.5-21	135

Flange is not adjustable.

**ADJUSTABLE SHOWER DRAIN SQUARE TYPE 361**

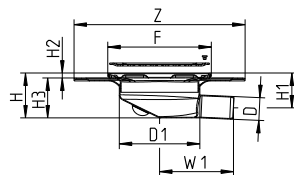
WITH SIDE INLETS



Type no.	EAN no.	D	D1	F	Z	H	H1	H2	H3	H4	W2
361.300.075	5705499105544	75	110	145x145	Ø240	302-317	63	6.5-21	295	100-115	104
361.300.110	5705499105568	110	110	145x145	Ø240	195-210	-	6.5-21	188	100-115	104

Flange is not adjustable.

**MINI DRAIN SQUARE TYPE 381**



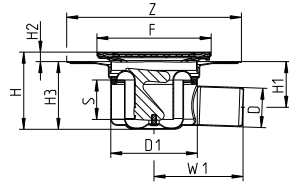
Type no.	EAN no.	D	D1	F	Z	H	H1	H2	H3	W1
381.300.032	5705499107401	32	113	145x145	Ø240	62-72	49-59	6-16	56	104

Not for removable water trap. Adaptor for D=40mm included.  
Flange is not adjustable.

with liquid membrane

**ADJUSTABLE SHOWER DRAIN SQUARE, LOW MODEL TYPE 382**

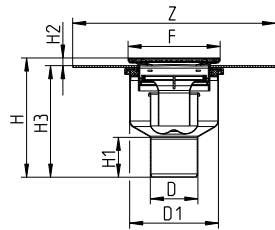
WITH REMOVABLE WATER TRAP



Type no.	EAN no.	D	D1	F	Z	H	H1	H2	H3	S	W1
382.300.050 V	5705499131772	50	110	145x145	Ø222	95-105	58	9-19	86	50	113

**ADJUSTABLE SHOWER DRAIN SQUARE TYPE 350.320**

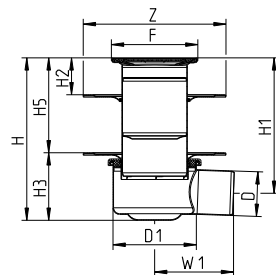
WITH REMOVABLE WATER TRAP



Type no.	EAN no.	D	D1	F	Z	H	H1	H2	H3
350.320.050 V	5705499127645	50	140	145x145	Ø320	192-224	58	12-26	180-208
350.320.075 V	5705499127652	75	140	145x145	Ø320	188-220	63	12-26	176-194
350.320.110 V	5705499127669	110	140	145x145	Ø320	156-188	44	12-26	144-162

**ADJUSTABLE SHOWER DRAIN SQUARE TYPE 310.390**

WITH TWO FLANGES

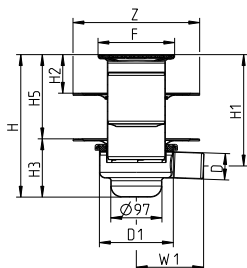


Type no.	EAN no.	D	D1	F	Z	H	H1	H2	H3	H5	W1
310.390.075	5705499127683	75	140	145x145	Ø240	273-301	228-256	6-153	114-128	160-172	133

with liquid membrane

**ADJUSTABLE SHOWER DRAIN SQUARE TYPE 314.390**

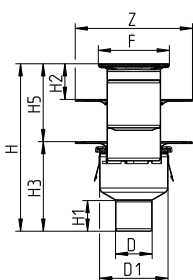
WITH TWO FLANGES



Type no.	EAN no.	D	D1	F	Z	H	H1	H2	H3	H5	W1
314.390.050	5705499127690	50	140	145x145	Ø240	270-298	211-239	6-153	111-125	160-172	127

**ADJUSTABLE SHOWER DRAIN SQUARE TYPE 350.390**

WITH TWO FLANGES



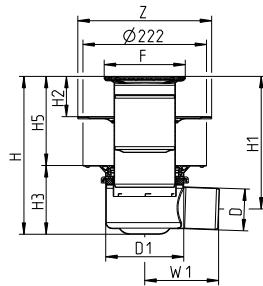
Type no.	EAN no.	D	D1	F	Z	H	H1	H2	H3	H5
350.390.050	5705499127706	50	140	145x145	Ø240	275-363	58	6-153	188-203	73-160
350.390.075	5705499127713	75	140	145x145	Ø240	272-359	63	6-153	184-199	73-160
350.390.110	5705499127720	110	140	145x145	Ø240	274-327	79	6-153	152-167	107-160



with liquid & sheet membranes

## ADJUSTABLE SHOWER DRAIN SQUARE TYPE 312.390

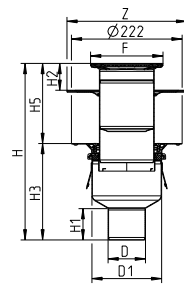
WITH TWO FLANGES



Type no.	EAN no.	D	D1	F	Z	H	H1	H2	H3	H5	W1
312.390.050	5705499134353	50	140	145x145	Ø240	272-298	238-266	6-150	123-138	148-160	128
312.390.075	5705499134346	75	140	145x145	Ø240	272-298	226-254	6-150	123-138	148-160	133

## ADJUSTABLE SHOWER DRAIN SQUARE TYPE 352.390

WITH TWO FLANGES

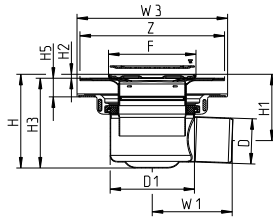


Type no.	EAN no.	D	D1	F	Z	H	H1	H2	H3	H5
352.390.050	5705499134360	50	140	145x145	Ø240	275-372	59	6-150	197-212	62-160
352.390.075	5705499134377	75	140	145x145	Ø240	273-368	63	6-150	193-208	64-160
352.390.110	5705499134384	110	140	145x145	Ø240	275-336	79	6-150	161-176	98-160

with liquid membrane and Lewis® sheeting

**ADJUSTABLE SHOWER DRAIN SQUARE TYPE 310**

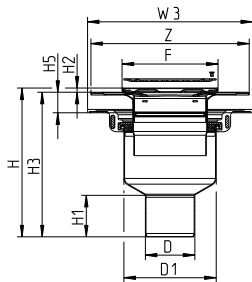
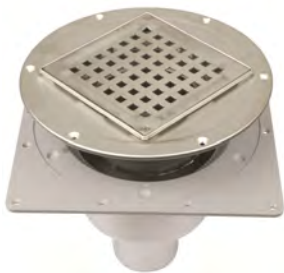
FOR LEWIS® PLATES



Type no.	EAN no.	D	D1	F	Z	H	H1	H2	H3	H5	W1	W3
310.340.075	5705499120257	75	140	145x145	Ø240	156-200	110-155	6-21	149-179	31-61	133	250

**ADJUSTABLE SHOWER DRAIN SQUARE TYPE 350**

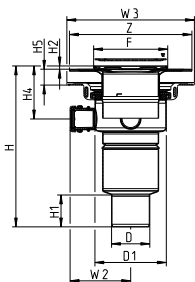
FOR LEWIS® PLATES



Type no.	EAN no.	D	D1	F	Z	H	H1	H2	H3	H5	W3
350.340.075	5705499120264	75	140	145x145	Ø240	226-271	63	6-21	219-249	31-61	250

**ADJUSTABLE SHOWER DRAIN SQUARE TYPE 351**

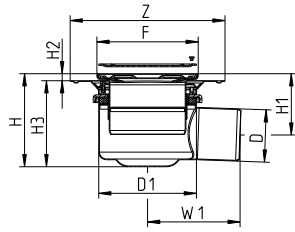
FOR LEWIS® PLATES, WITH SIDE INLETS



Type no.	EAN no.	D	D1	F	Z	H	H1	H2	H4	H5	W2	W3
351.340.075	5705499120271	75	140	145x145	Ø240	316-361	63	6-21	104-149	31-61	119	250

with sheet membrane

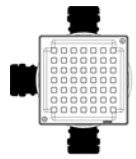
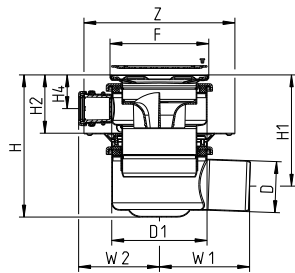
**ADJUSTABLE SHOWER DRAIN SQUARE TYPE 312**



Type no.	EAN no.	D	D1	F	Z	H	H1	H2	H3	W1
312.300.075	5705499105308	75	140	145x145	Ø222	133-188	88-143	10-50	123-138	133

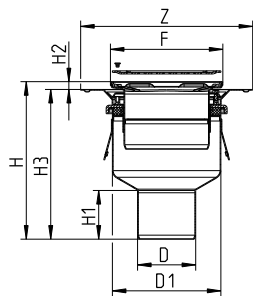
**ADJUSTABLE SHOWER DRAIN SQUARE TYPE 313**

WITH SIDE INLETS



Type no.	EAN no.	D	D1	F	Z	H	H1	H2	H4	W1	W2
313.300.075	5705499105322	75	140	145x145	Ø222	199-264	154-219	76-126	48-58	133	119

**ADJUSTABLE SHOWER DRAIN SQUARE TYPE 352**

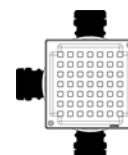
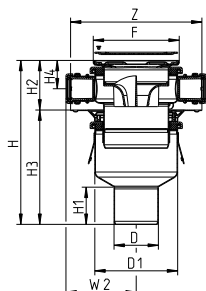


Type no.	EAN no.	D	D1	F	Z	H	H1	H2	H3
352.300.075	5705499105421	75	140	145x145	Ø222	203-258	63	10-50	193-208
352.300.110	5705499105445	110	140	145x145	Ø222	171-226	79	10-50	161-176

with sheet membrane

**ADJUSTABLE SHOWER DRAIN SQUARE TYPE 353**

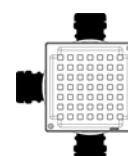
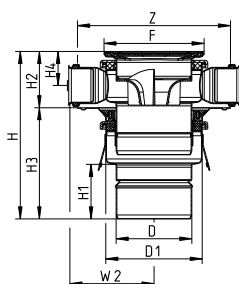
WITH SIDE INLETS



Type no.	EAN no.	D	D1	F	Z	H	H1	H2	H3	H4	W2
353.300.075	5705499105469	75	140	145x145	Ø222	269-334	63	76-126	193-208	48-58	119
353.300.110	5705499105483	110	140	145x145	Ø222	237-302	79	76-126	161-176	48-58	119

**ADJUSTABLE SHOWER DRAIN SQUARE TYPE 353**

WITH SIDE INLETS 50 MM

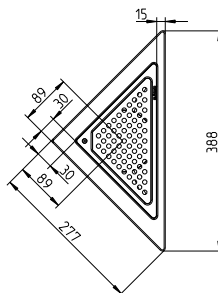
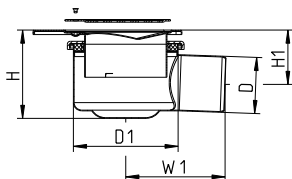


Type no.	EAN no.	D	D1	F	Z	H	H1	H2	H3	H4	W2
353.303.110	5705499123753	110	140	145x145	Ø222	243-304	79	82-128	161-176	50-60	122

without membrane

**ADJUSTABLE SHOWER DRAIN TRIO TYPE 110**

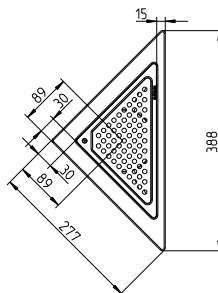
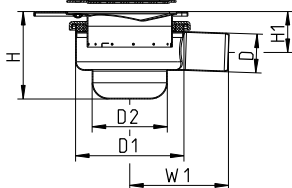
FOR CORNER INSTALLATION



Type no.	EAN no.	D	D1	H	H1	W1
110.360.075	5705499121117	75	140	116-149	71-104	133

**ADJUSTABLE SHOWER DRAIN TRIO, LOW MODEL TYPE 114**

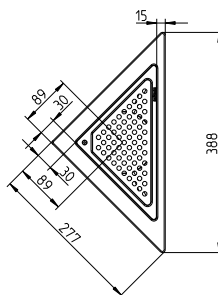
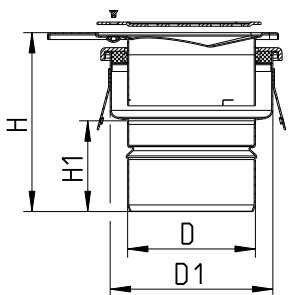
FOR CORNER INSTALLATION



Type no.	EAN no.	D	D1	H	H1	W1	D2
114.360.050	5705499124118	50	140	113-123	53-63	127	97

**ADJUSTABLE SHOWER DRAIN TRIO TYPE 150**

FOR CORNER INSTALLATION

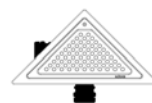
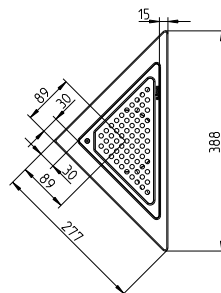
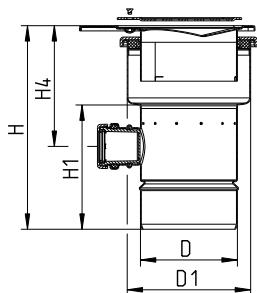


Type no.	EAN no.	D	D1	H	H1
150.360.110	5705499121131	110	140	154-187	79

without membrane

**ADJUSTABLE SHOWER DRAIN TRIO TYPE 155**

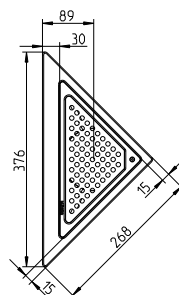
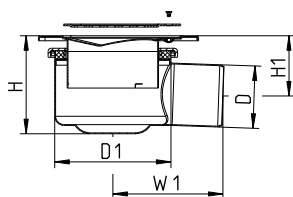
FOR CORNER INSTALLATION, WITH SIDE INLETS



Type no.	EAN no.	D	D1	H	H1	H4
155.360.110	5705499121155	110	140	231-264	140	137-170

**ADJUSTABLE SHOWER DRAIN TRIO TYPE 110**

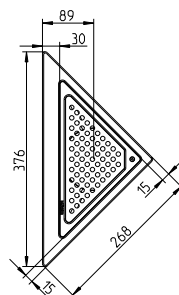
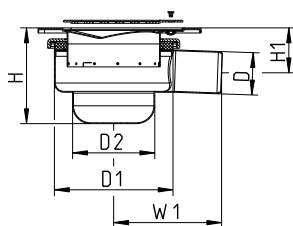
FOR INSTALLATION ALONG WALL



Type no.	EAN no.	D	D1	H	H1	W1
110.370.075	5705499121124	75	140	116-149	71-104	133

**ADJUSTABLE SHOWER DRAIN TRIO, LOW MODEL TYPE 114**

FOR INSTALLATION ALONG WALL

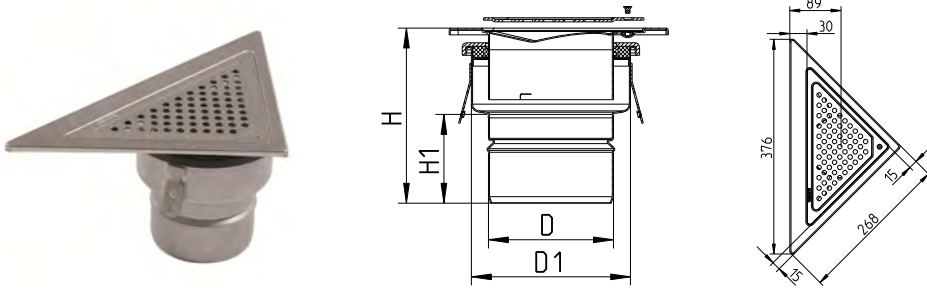


Type no.	EAN no.	D	D1	H	H1	W1	D2
114.370.050	5705499124125	50	140	113-123	53-63	127	97

without membrane

**ADJUSTABLE SHOWER DRAIN TRIO TYPE 150**

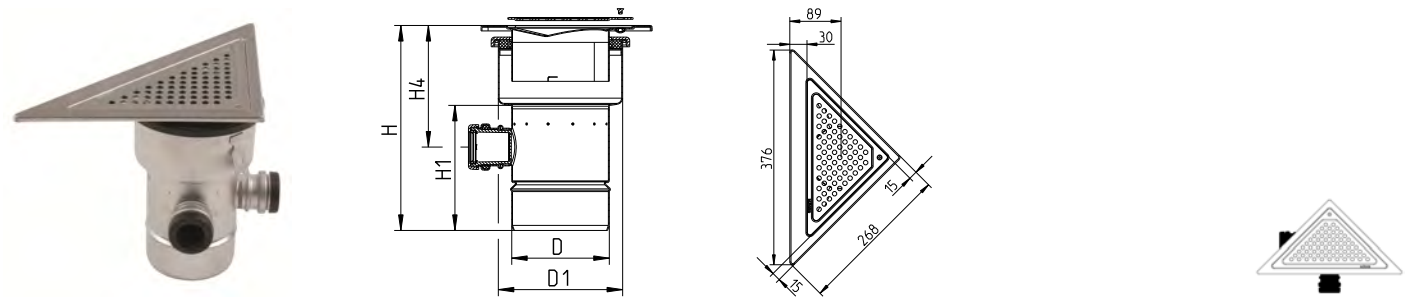
FOR INSTALLATION ALONG WALL



Type no.	EAN no.	D	D1	H	H1
150.370.110	5705499121148	110	140	154-187	79

**ADJUSTABLE SHOWER DRAIN TRIO TYPE 155**

FOR INSTALLATION ALONG WALL, WITH SIDE INLETS



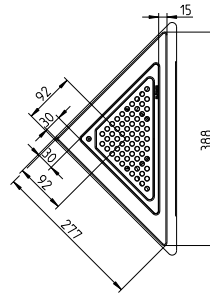
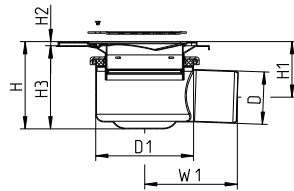
Type no.	EAN no.	D	D1	H	H1	H4
155.370.110	5705499121162	110	140	231-264	140	137-170



with liquid membrane

**ADJUSTABLE SHOWER DRAIN TRIO TYPE 310**

FOR CORNER INSTALLATION

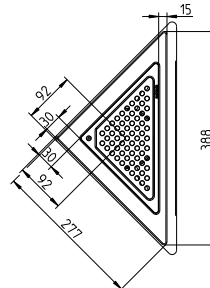
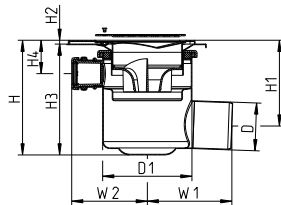


Type no.	EAN no.	D	D1	H	H1	H2	H3	W1
310.360.075	5705499120066	75	140	119-149	74-104	6-21	113-128	133

Mounting brackets included for easy and safe installation. Mounting brackets to be removed after installation to allow wall and floor to move independently.

**ADJUSTABLE SHOWER DRAIN TRIO TYPE 311**

FOR CORNER INSTALLATION, WITH SIDE INLETS

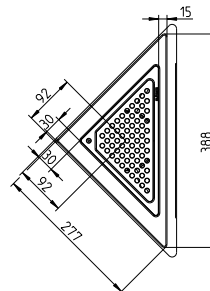
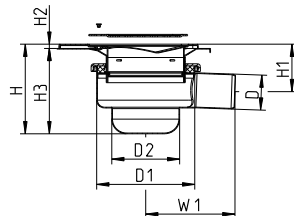


Type no.	EAN no.	D	D1	H	H1	H2	H3	H4	W1	W2
311.360.075	5705499120080	75	140	180-210	135-165	6-21	174-189	52-82	133	119

Mounting brackets included for easy and safe installation. Mounting brackets to be removed after installation to allow wall and floor to move independently.

**ADJUSTABLE SHOWER DRAIN TRIO, LOW MODEL TYPE 314**

FOR CORNER INSTALLATION



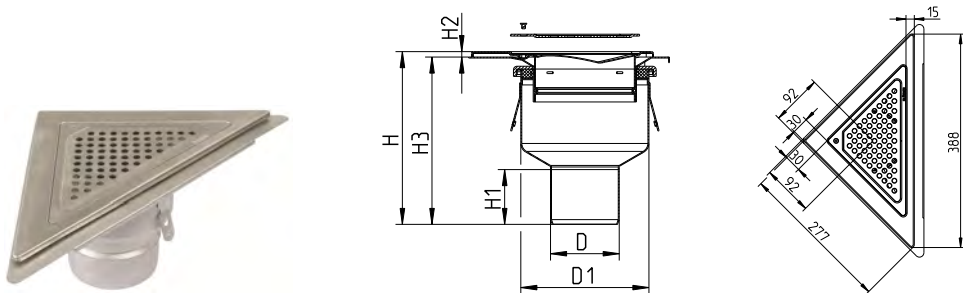
Type no.	EAN no.	D	D1	H	H1	H2	H3	W1	D2
314.360.050	5705499120103	50	140	116-146	56-86	6-21	110-125	127	97

Mounting brackets included for easy and safe installation. Mounting brackets to be removed after installation to allow wall and floor to move independently.

with liquid membrane

**ADJUSTABLE SHOWER DRAIN TRIO TYPE 350**

FOR CORNER INSTALLATION

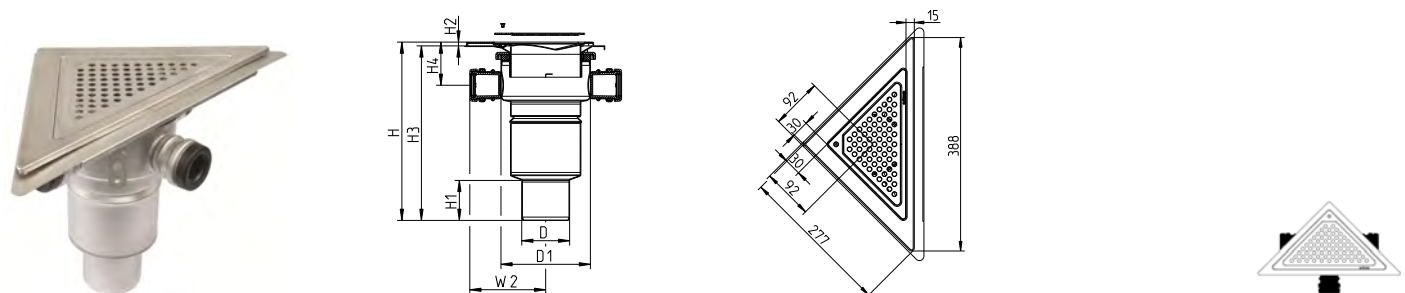


Type no.	EAN no.	D	D1	H	H1	H2	H3
350.360.075	5705499127744	75	140	190-220	63	6-21	184-199
350.360.110	5705499120127	110	140	157-187	79	6-21	151-166

Mounting brackets included for easy and safe installation. Mounting brackets to be removed after installation to allow wall and floor to move independently.

**ADJUSTABLE SHOWER DRAIN TRIO TYPE 351**

FOR CORNER INSTALLATION, WITH SIDE INLETS



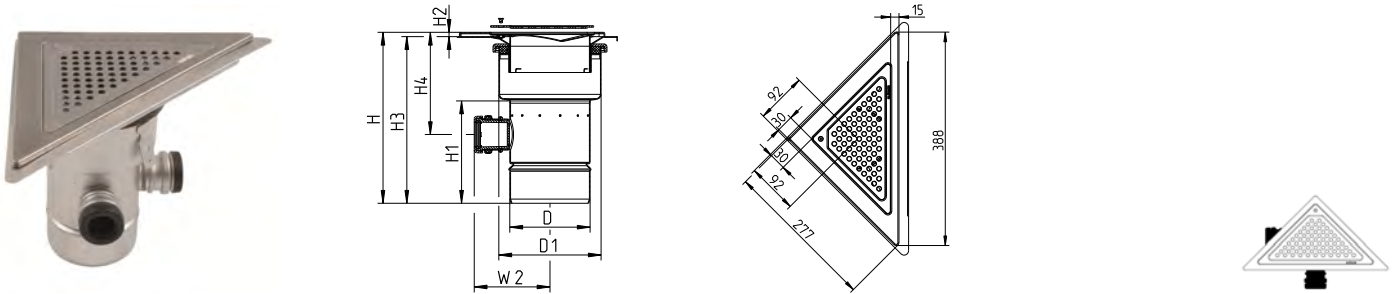
Type no.	EAN no.	D	D1	H	H1	H2	H3	H4	W2
351.360.075	5705499127751	75	140	279-309	63	6-21	273-288	68-98	119
351.360.110	5705499120141	110	140	172-202	79	6-21	166-181	68-98	119

Mounting brackets included for easy and safe installation. Mounting brackets to be removed after installation to allow wall and floor to move independently.

with liquid membrane

**ADJUSTABLE SHOWER DRAIN TRIO TYPE 355**

FOR CORNER INSTALLATION, WITH SIDE INLETS

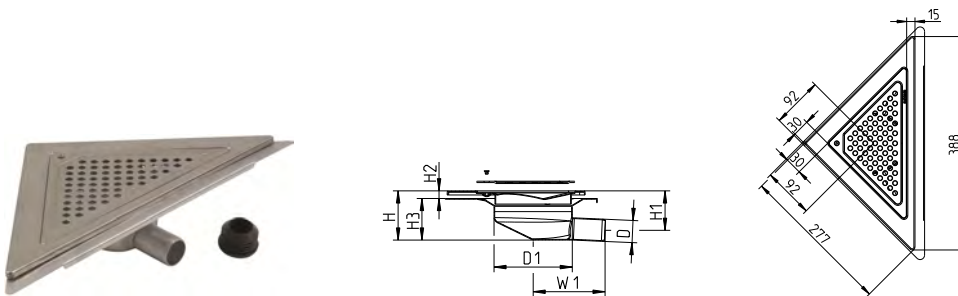


Type no.	EAN no.	D	D1	H	H1	H2	H3	H4	W2
355.360.110	5705499120165	110	140	234-264	140	6-21	228-243	140-170	104

Mounting brackets included for easy and safe installation. Mounting brackets to be removed after installation to allow wall and floor to move independently.

**MINI DRAIN TRIO TYPE 381**

FOR CORNER INSTALLATION



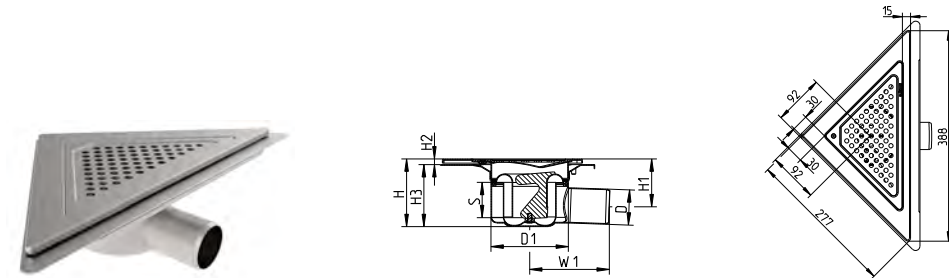
Type no.	EAN no.	D	D1	H	H1	H2	H3	W1
381.360.032	5705499120189	32	113	66-76	52-62	6-16	60	104

Not for removable water trap. Adaptor for D=40mm included. Mounting brackets included for easy and safe installation. Mounting brackets to be removed after installation to allow wall and floor to move independently.

with liquid membrane

**ADJUSTABLE SHOWER DRAIN TRIO, LOW MODEL TYPE 382**

FOR CORNER INSTALLATION, WITH REMOVABLE WATER TRAP

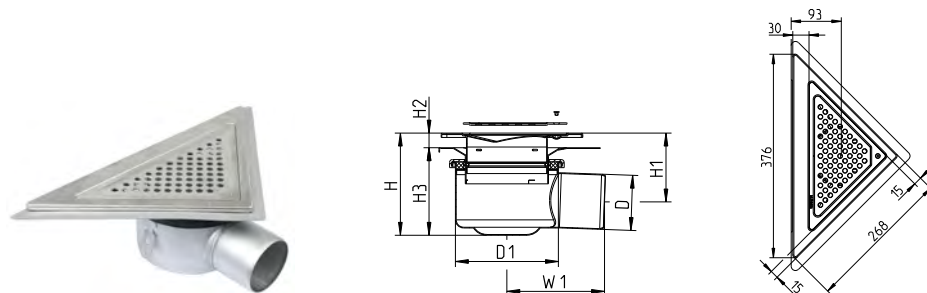


Type no.	EAN no.	D	D1	H	H1	H2	H3	S	W1
382.360.050 V	5705499138979	50	110	96-104	68-76	8-16	88	50	113

Mounting brackets included for easy and safe installation. Mounting brackets to be removed after installation to allow wall and floor to move independently.

**ADJUSTABLE SHOWER DRAIN TRIO TYPE 310**

FOR INSTALLATION ALONG WALL

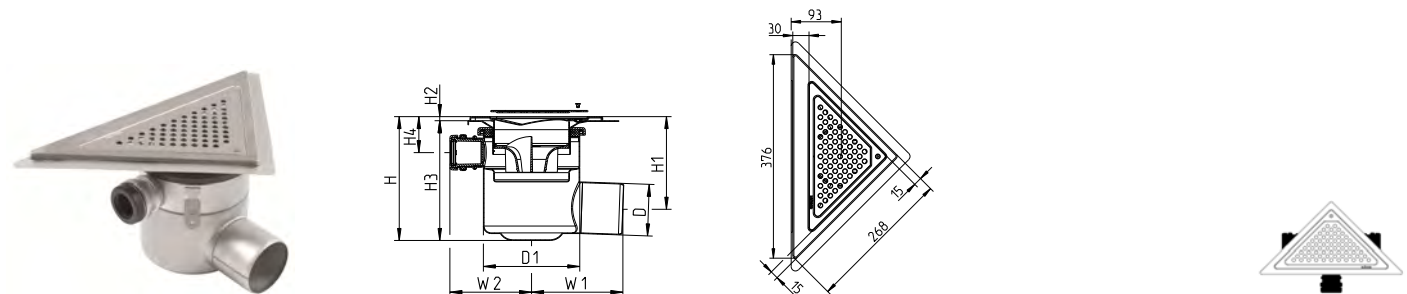


Type no.	EAN no.	D	D1	H	H1	H2	H3	W1
310.370.075	5705499120073	75	140	119-149	74-104	6-21	113-128	133

Mounting brackets included for easy and safe installation. Mounting brackets to be removed after installation to allow wall and floor to move independently.

**ADJUSTABLE SHOWER DRAIN TRIO TYPE 311**

FOR INSTALLATION ALONG WALL, WITH SIDE INLETS



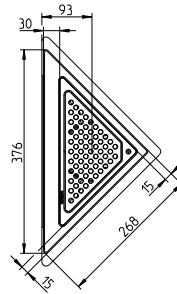
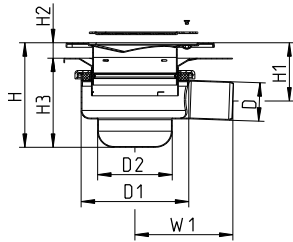
Type no.	EAN no.	D	D1	H	H1	H2	H3	H4	W1	W2
311.370.075	5705499120097	75	140	180-210	135-165	6-21	174-189	52-82	133	119

Mounting brackets included for easy and safe installation. Mounting brackets to be removed after installation to allow wall and floor to move independently.

with liquid membrane

**ADJUSTABLE SHOWER DRAIN TRIO, LOW MODEL TYPE 314**

FOR INSTALLATION ALONG WALL

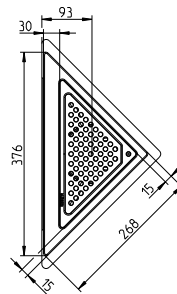
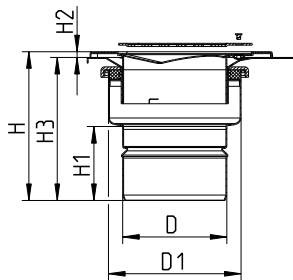


Type no.	EAN no.	D	D1	H	H1	H2	H3	W1	D2
314.370.050	5705499120110	50	140	116-146	56-86	6-21	110-125	127	97

Mounting brackets included for easy and safe installation. Mounting brackets to be removed after installation to allow wall and floor to move independently.

**ADJUSTABLE SHOWER DRAIN TRIO TYPE 350**

FOR INSTALLATION ALONG WALL

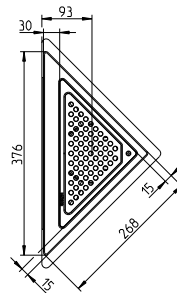
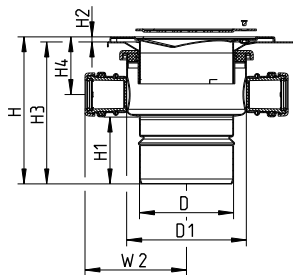


Type no.	EAN no.	D	D1	H	H1	H2	H3
350.370.110	5705499120134	110	140	157-187	79	6-21	151-166

Mounting brackets included for easy and safe installation. Mounting brackets to be removed after installation to allow wall and floor to move independently.

**ADJUSTABLE SHOWER DRAIN TRIO TYPE 351**

FOR INSTALLATION ALONG WALL, WITH SIDE INLETS



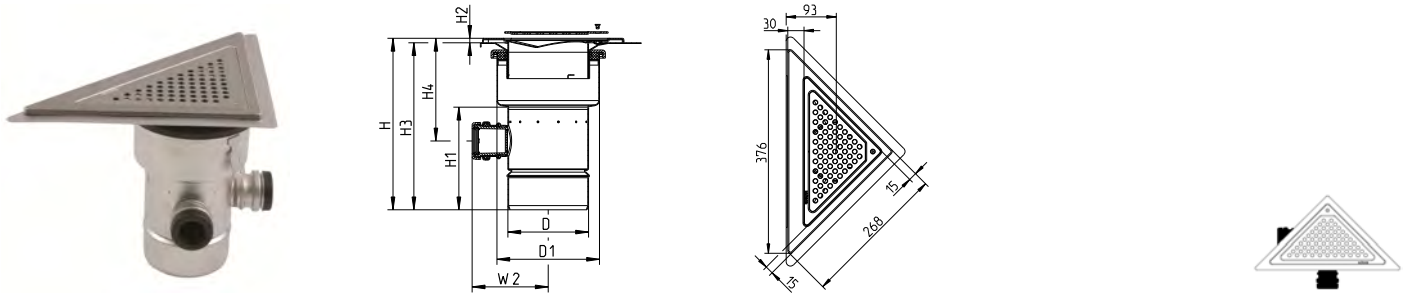
Type no.	EAN no.	D	D1	H	H1	H2	H3	H4	W2
351.370.110	5705499120158	110	140	172-202	79	6-21	166-181	68-98	119

Mounting brackets included for easy and safe installation. Mounting brackets to be removed after installation to allow wall and floor to move independently.

with liquid membrane

## ADJUSTABLE SHOWER DRAIN TRIO TYPE 355

FOR INSTALLATION ALONG WALL, WITH SIDE INLETS

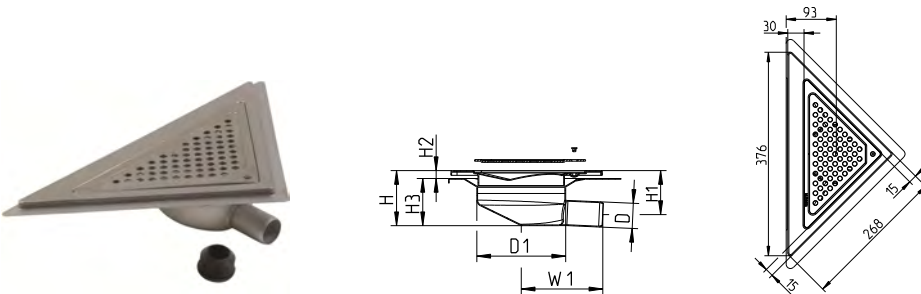


Type no.	EAN no.	D	D1	H	H1	H2	H3	H4	W2
355.370.110	5705499120172	110	140	234-264	140	6-21	228-243	140-170	104

Mounting brackets included for easy and safe installation. Mounting brackets to be removed after installation to allow wall and floor to move independently.

## MINI DRAIN TRIO TYPE 381

FOR INSTALLATION ALONG WALL



Type no.	EAN no.	D	D1	H	H1	H2	H3	W1
381.370.032	5705499120196	32	113	66-76	52-62	6-16	60	104

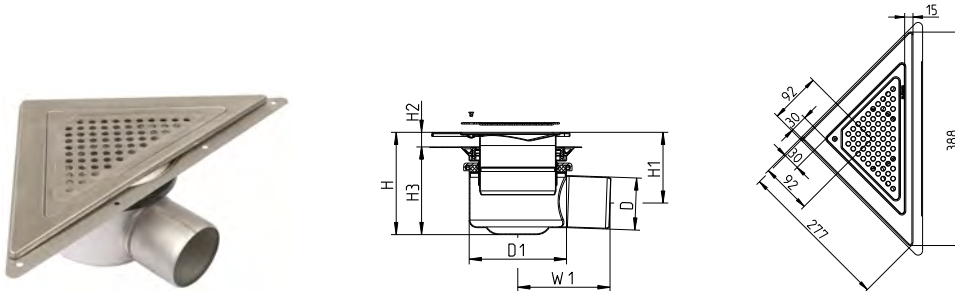
Not for removable water trap. Adaptor for D=40mm included.

Mounting brackets included for easy and safe installation. Mounting brackets to be removed after installation to allow wall and floor to move independently.

with sheet membrane

**ADJUSTABLE SHOWER DRAIN TRIO TYPE 312**

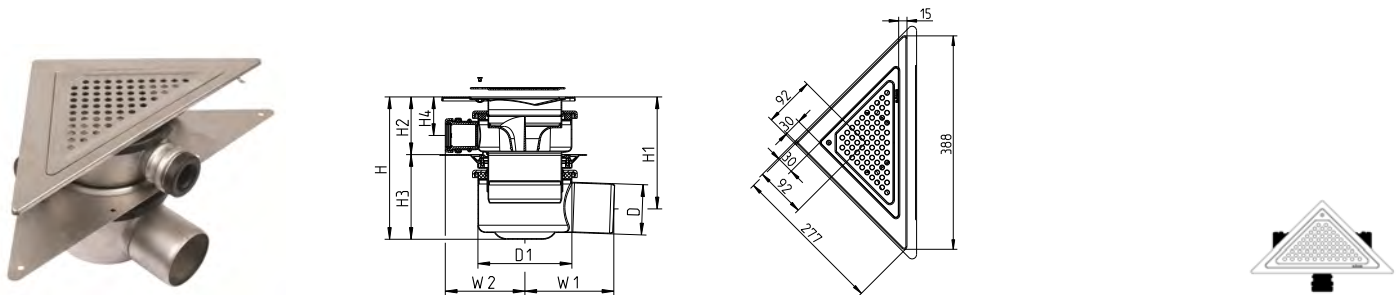
FOR CORNER INSTALLATION



Type no.	EAN no.	D	D1	H	H1	H2	H3	W1
312.360.075	5705499121360	75	140	133-188	88-143	10-50	123-138	133

**ADJUSTABLE SHOWER DRAIN TRIO TYPE 313**

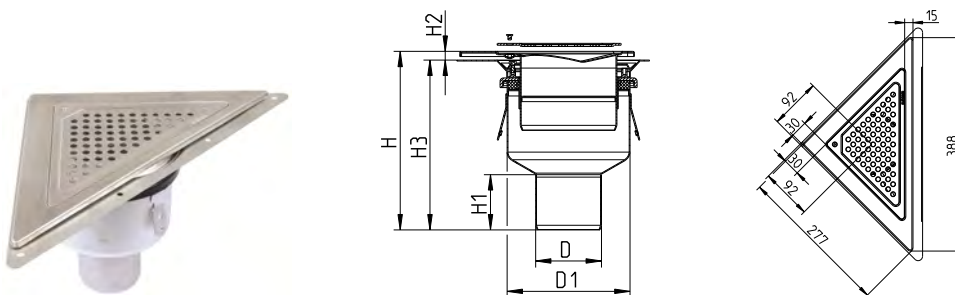
FOR CORNER INSTALLATION, WITH SIDE INLETS



Type no.	EAN no.	D	D1	H	H1	H2	H3	H4	W1	W2
313.360.075	5705499121384	75	140	200-265	155-220	77-127	123-138	49-59	133	119

**ADJUSTABLE SHOWER DRAIN TRIO TYPE 352**

FOR CORNER INSTALLATION

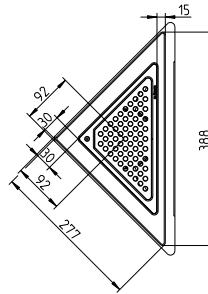
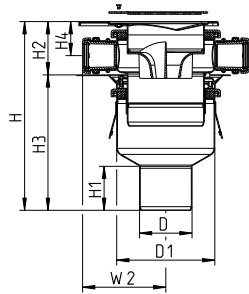


Type no.	EAN no.	D	D1	H	H1	H2	H3
352.360.075	5705499121407	75	140	203-258	63	10-50	193-208

with sheet membrane

**ADJUSTABLE SHOWER DRAIN TRIO TYPE 353**

FOR CORNER INSTALLATION, WITH SIDE INLETS

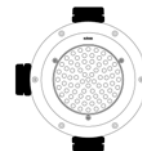
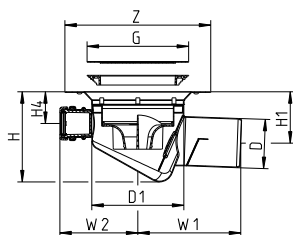


Type no.	EAN no.	D	D1	H	H1	H2	H3	H4	W2
353.360.075	5705499121421	75	140	269-334	63	77-127	193-208	49-59	119



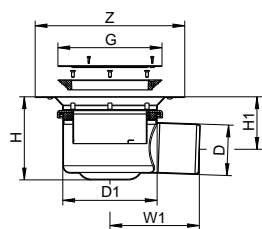
**ADJUSTABLE SHOWER DRAIN CIRCLE, LOW MODEL TYPE 202**

WITH SIDE INLETS AND INTEGRATED WATER TRAP



Type no.	EAN no.	D	D1	Z	G	H	H1	H4	W1	W2
202.300.075	5705499118292	75	140	Ø222	Ø155	137-152	78-93	48-63	157	119

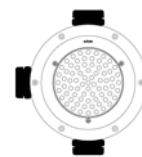
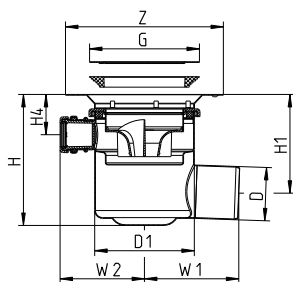
**ADJUSTABLE SHOWER DRAIN CIRCLE TYPE 210**



Type no.	EAN no.	D	D1	Z	G	H	H1	W1
210.300.050	5705499124316	50	140	Ø222	Ø155	123-153	90-120	128
210.300.075	5705499105049	75	140	Ø222	Ø155	123-153	78-108	133

**ADJUSTABLE SHOWER DRAIN CIRCLE TYPE 211**

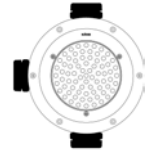
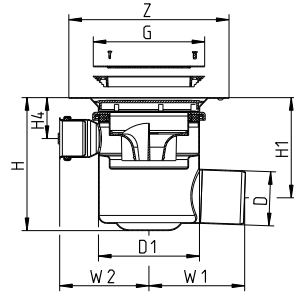
WITH SIDE INLETS



Type no.	EAN no.	D	D1	Z	G	H	H1	H4	W1	W2
211.300.075	5705499105063	75	140	Ø222	Ø155	184-194	139-149	57-67	133	119

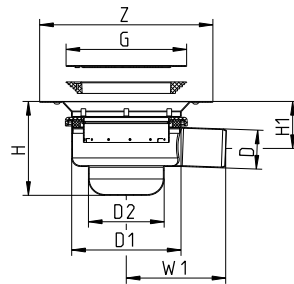
**ADJUSTABLE SHOWER DRAIN CIRCLE TYPE 211**

WITH SIDE INLETS 50 MM



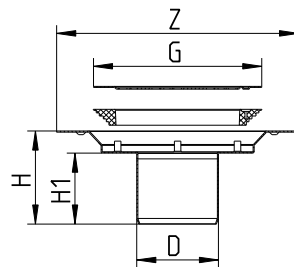
Type no.	EAN no.	D	D1	Z	G	H	H1	H4	W1	W2
211.303.075	5705499123722	75	140	Ø222	Ø155	183-193	139-149	57-67	133	124

**ADJUSTABLE SHOWER DRAIN CIRCLE, LOW MODEL TYPE 214**



Type no.	EAN no.	D	D1	Z	G	H	H1	W1	D2
214.300.050	5705499118070	50	140	Ø222	Ø155	120-130	60-70	127	97

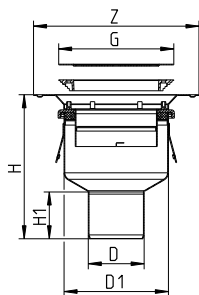
**SHOWER DRAIN CIRCLE, LOW MODEL TYPE 240**



Type no.	EAN no.	D	Z	G	H	H1
240.300.050	5705499106534	50	Ø222	Ø155	81	60
240.300.075	5705499105087	75	Ø222	Ø155	86	65

Not for removable water trap

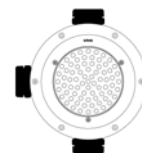
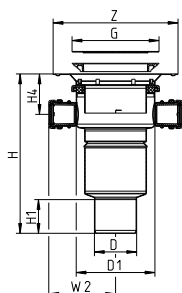
**ADJUSTABLE SHOWER DRAIN CIRCLE TYPE 250**



Type no.	EAN no.	D	D1	Z	G	H	H1
250.300.050	5705499123562	50	140	Ø222	Ø155	197-227	58
250.300.075	5705499105100	75	140	Ø222	Ø155	193-223	63
250.300.110	5705499105124	110	140	Ø222	Ø155	161-191	79

**ADJUSTABLE SHOWER DRAIN CIRCLE TYPE 251**

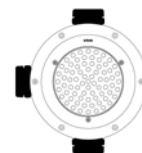
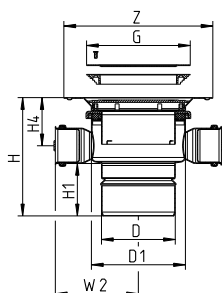
WITH SIDE INLETS



Type no.	EAN no.	D	D1	Z	G	H	H1	H4	W2
251.300.075	5705499105148	75	140	Ø222	Ø155	283-313	63	72-102	119
251.300.110	5705499105162	110	140	Ø222	Ø155	176-206	79	72-102	119

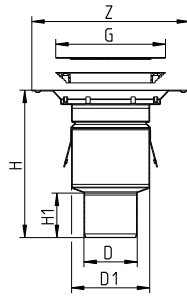
**ADJUSTABLE SHOWER DRAIN CIRCLE TYPE 251**

WITH SIDE INLETS 50 MM



Type no.	EAN no.	D	D1	Z	G	H	H1	H4	W2
251.303.110	5705499123555	110	140	Ø222	Ø155	176-206	79	72-102	124

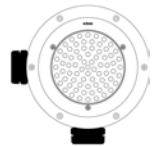
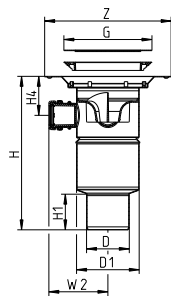
**SHOWER DRAIN CIRCLE TYPE 260**



Type no.	EAN no.	D	D1	Z	G	H	H1
260.300.050	5705499123548	50	110	Ø222	Ø155	203	60
260.300.075	5705499105186	75	110	Ø222	Ø155	208	63
260.300.110	5705499105209	110	110	Ø222	Ø155	101	80

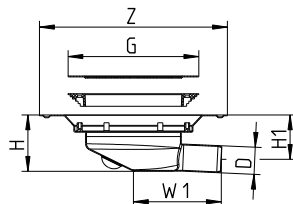
**SHOWER DRAIN CIRCLE TYPE 261**

WITH SIDE INLETS



Type no.	EAN no.	D	D1	Z	G	H	H1	H4	W2
261.300.075	5705499105223	75	110	Ø222	Ø155	270	63	69	104
261.300.110	5705499105247	110	110	Ø222	Ø155	163	-	69	104

**MINI DRAIN CIRCLE TYPE 281**

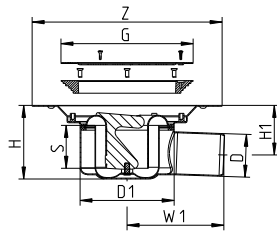


Type no.	EAN no.	D	Z	G	H	H1	W1
281.300.032	5705499107388	32	Ø222	Ø155	67	52	104

Not for removable water trap. Adaptor for D=40mm included.

**SHOWER DRAIN CIRCLE TYPE 283**

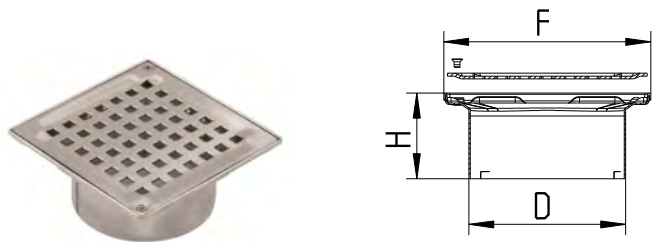
WITH REMOVABLE WATER TRAP



Type no.	EAN no.	D	D1	Z	G	H	H1	S	W1
283.300.050 V	5705499134964	50	110	Ø222	Ø155	86	58	50	113

**UPPER PART FOR SHOWER DRAIN SQUARE TYPE 110**

WITHOUT SUPPORTING RING



Type no.	EAN no.	D	F	H
110.300.000	5705499106916	110	145x145	60

Suitable for adjustable drain type 110, 151, 155, 351, 355, 360 and 361.  
And for adjustable drain type 150 and 350 with outlet D=110mm.

**UPPER PART FOR SHOWER DRAIN SQUARE, EXTRA LENGTH TYPE 110**

WITHOUT SUPPORTING RING



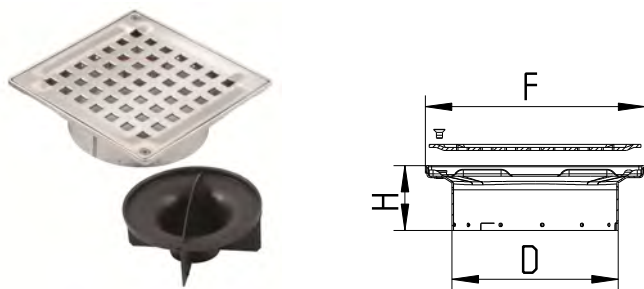
Type no.	EAN no.	D	F	H
110.300.001	5705499107210	110	145x145	199

Suitable for adjustable drain type 360,  
and for all adjustable drains with one or more of the following characteristics:  
- horizontal outlet  
- outlet D=110mm  
- side inlets

Please note: To extend the height of shower drain type 3XX we recommend using extra-length flange type 326.300.001 (see accessories)

**UPPER PART FOR SHOWER DRAIN SQUARE TYPE 111**

WITHOUT SUPPORTING RING

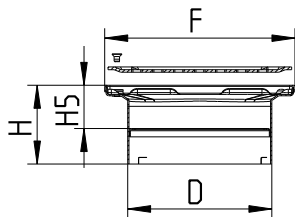


Type no.	EAN no.	D	F	H
111.300.000	5705499106893	110	145x145	43

Suitable for adjustable drain type 102, 111, 114, 302, 311, 313 and 353.

**UPPER PART FOR SHOWER DRAIN SQUARE TYPE 150**

WITH SUPPORTING RING FOR WATER TRAP

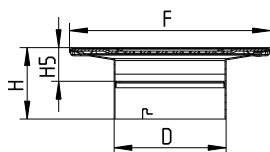


Type no.	EAN no.	D	F	H	H5
150.300.000	5705499106954	110	145x145	60	33

Suitable for adjustable drain type 150 with outlet D=50mm or D=75mm

**UPPER PART FOR SHOWER DRAIN SQUARE TYPE 150**

WITH SUPPORTING RING FOR WATER TRAP

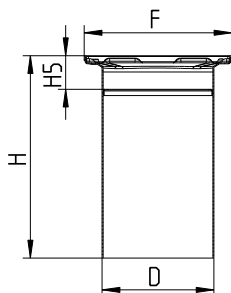


Type no.	EAN no.	D	F	H	H5
150.300.002	5705499135466	110	197x197	70	33

Suitable for adjustable drain type 150 with outlet D=50mm or D=75mm

**UPPER PART FOR SHOWER DRAIN SQUARE, EXTRA LENGTH TYPE 150**

WITH SUPPORTING RING FOR WATER TRAP



Type no.	EAN no.	D	F	H	H5
150.300.001	5705499107234	110	145x145	199	33

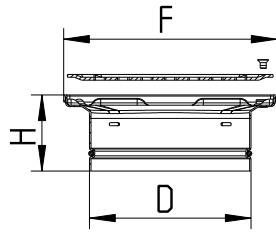
Suitable for adjustable drain type 150, 350 and 352 with outlet D=50mm or D=75mm.

Please note: To extend the height of shower drain type 3XX we recommend using extra-length flange type 326.300.001 (see accessories)



**UPPER PART FOR SHOWER DRAIN SQUARE TYPE 310**

WITH SUPPORTING RING FOR WATER TRAP

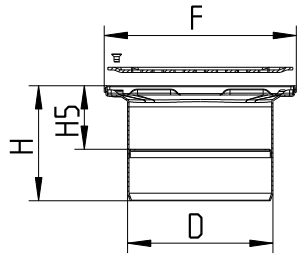


Type no.	EAN no.	D	F	H
310.300.000	5705499118018	110	145x145	52

Suitable for adjustable drain type 310 and 314.  
And for adjustable drain type 350 with outlet D=50mm or D=75mm.

**UPPER PART FOR SHOWER DRAIN SQUARE TYPE 312**

WITH SUPPORTING RING FOR WATER TRAP

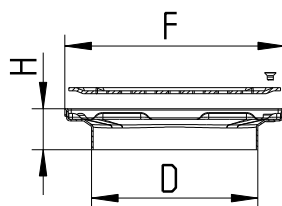


Type no.	EAN no.	D	F	H	H5
312.300.000	5705499106930	110	145x145	87	48

Suitable for adjustable drain type 312 and 352.

**UPPER PART FOR SHOWER DRAIN SQUARE TYPE 381**

WITHOUT SUPPORTING RING

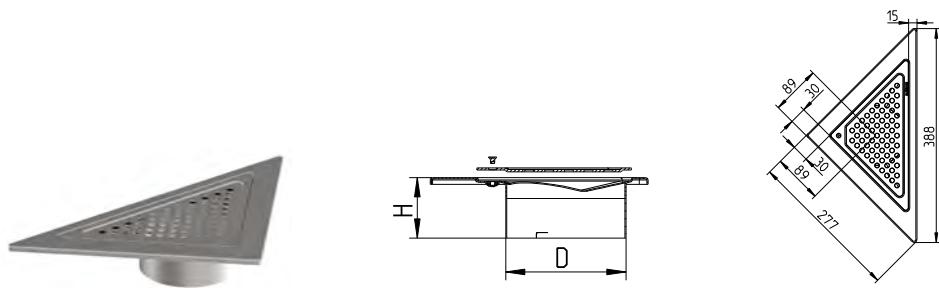


Type no.	EAN no.	D	F	H
381.300.000	5705499118421	110	145x145	27

Suitable for adjustable drain type 381.

**UPPER PART FOR SHOWER DRAIN TRIO TYPE 110**

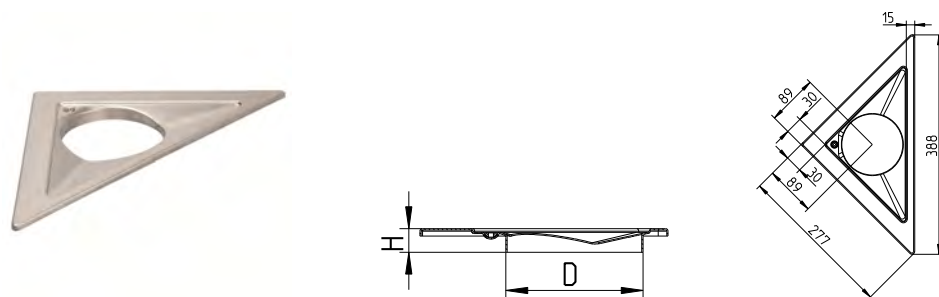
FOR CORNER INSTALLATION, WITHOUT SUPPORTING RING



Type no.	EAN no.	D	H
110.360.000	5705499138030	110	55

**UPPER PART FOR SHOWER DRAIN TRIO TYPE 110**

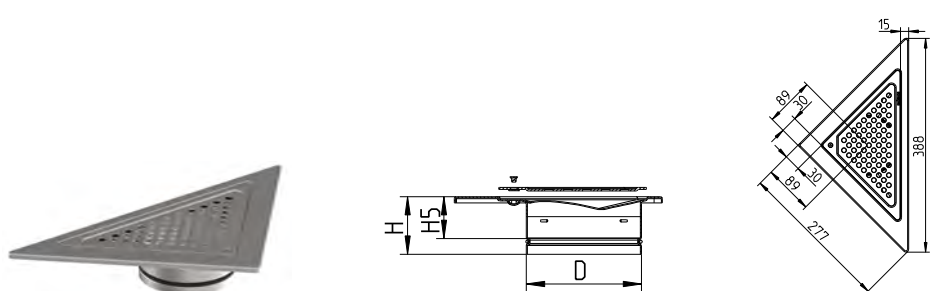
FOR CORNER INSTALLATION, WITHOUT SUPPORTING RING



Type no.	EAN no.	D	H
110.360.002	5705499412482	110	19

**UPPER PART FOR SHOWER DRAIN TRIO TYPE 310**

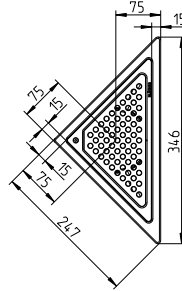
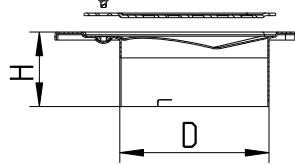
FOR CORNER INSTALLATION, WITH SUPPORTING RING FOR WATER TRAP



Type no.	EAN no.	D	H	H5
310.360.000	5705499138054	110	55	40

**UPPER PART FOR SHOWER DRAIN TRIO TYPE 110**

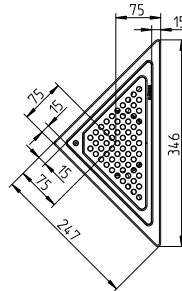
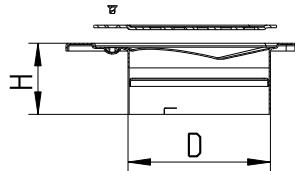
FOR FREE PLACING, WITHOUT SUPPORTING RING



Type no.	EAN no.	D	H
110.380.000	5705499120202	110	55

**UPPER PART FOR SHOWER DRAIN TRIO TYPE 150**

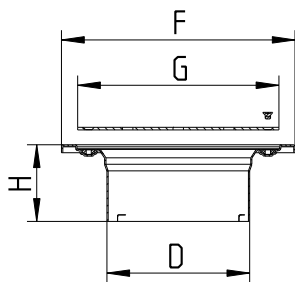
FOR FREE PLACING, WITH SUPPORTING RING FOR WATER TRAP



Type no.	EAN no.	D	H
150.380.000	5705499120219	110	55
150.380.002	5705499120523	110	31

**UPPER PART FOR SHOWER DRAIN CIRCLE TYPE 110.320.000**

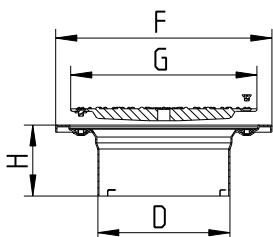
WITHOUT SUPPORTING RING



Type no.	EAN no.	D	F	G	H
110.320.000 S	5705499118032	110	Ø180	Ø155	59

**UPPER PART FOR SHOWER DRAIN CIRCLE TYPE 110.320.100**

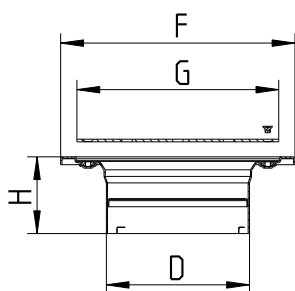
WITHOUT SUPPORTING RING



Type no.	EAN no.	D	F	G	H
110.320.100 S	5705499131871	110	Ø180	Ø155	59

**UPPER PART FOR SHOWER DRAIN CIRCLE TYPE 150.320.000**

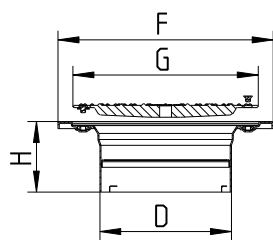
WITH SUPPORTING RING FOR WATER TRAP



Type no.	EAN no.	D	F	G	H
150.320.000 S	5705499118049	110	Ø180	Ø155	59

**UPPER PART FOR SHOWER DRAIN CIRCLE TYPE 150.320.100**

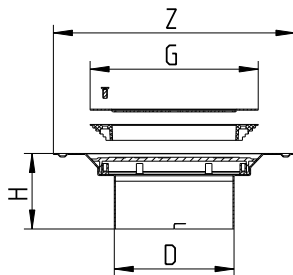
WITH SUPPORTING RING FOR WATER TRAP



Type no.	EAN no.	D	F	G	H
150.320.100 S	5705499131888	110	Ø180	Ø155	59

**UPPER PART FOR SHOWER DRAIN CIRCLE TYPE 210**

WITHOUT SUPPORTING RING

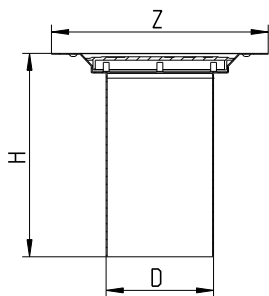


Type no.	EAN no.	D	Z	G	H
210.300.000	5705499106992	110	Ø222	Ø155	70

Suitable for adjustable drain type 210 and 251.  
And for adjustable drain type 250 with outlet D=110mm.

**UPPER PART FOR SHOWER DRAIN CIRCLE, EXTRA LENGTH TYPE 210**

WITHOUT SUPPORTING RING

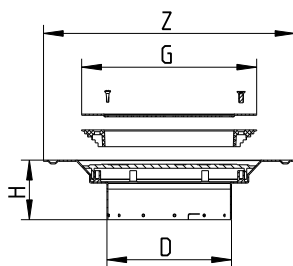


Type no.	EAN no.	D	Z	H
210.300.001	5705499117981	110	Ø222	209

Suitable for all adjustable drains with one or more of the following characteristics:  
- horizontal outlet  
- outlet D=110mm  
- side inlets

**UPPER PART FOR SHOWER DRAIN CIRCLE TYPE 211**

WITHOUT SUPPORTING RING

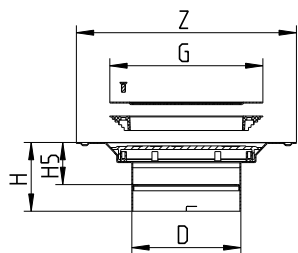


Type no.	EAN no.	D	Z	G	H
211.300.000	5705499106978	110	Ø222	Ø155	53

Suitable for adjustable drain type 202, 211, 214 and 253.

**UPPER PART FOR SHOWER DRAIN CIRCLE TYPE 250**

WITH SUPPORTING RING FOR WATER TRAP

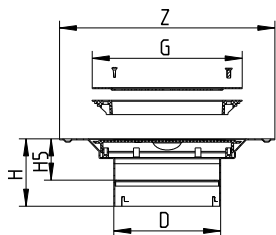


Type no.	EAN no.	D	Z	G	H	H5
250.300.000	5705499107012	110	Ø222	Ø155	70	43

Suitable for adjustable drain type 250 with outlet D=50mm or D=75mm.

**UPPER PART FOR SHOWER DRAIN CIRCLE TYPE 250**

WITH SUPPORTING RING FOR WATER TRAP

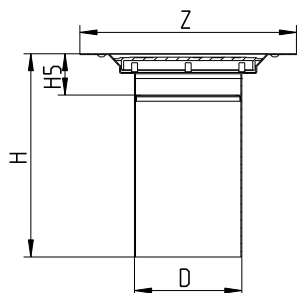


Type no.	EAN no.	D	Z	G	H	H5
250.300.002	5705499135459	110	Ø222	Ø155	70	43

Suitable for adjustable drain type 250 with outlet D=50mm or D=75mm.

**UPPER PART FOR SHOWER DRAIN CIRCLE, EXTRA LENGTH TYPE 250**

WITH SUPPORTING RING FOR WATER TRAP



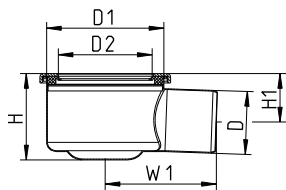
Type no.	EAN no.	D	Z	H	H5
250.300.001	5705499118001	110	Ø222	209	43

Suitable for adjustable drain type 250 with outlet D=50mm or D=75mm.



- without membrane flange

**LOWER PART FOR SHOWER DRAIN TYPE 110**

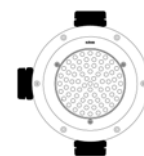
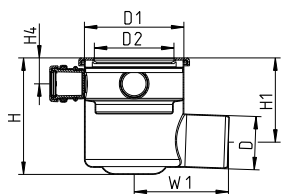


Type no.	EAN no.	D	D1	H	H1	W1	D2
110.000.050	5705499126914	50	140	103	70	128	113
110.000.075	5705499107036	75	140	103	58	133	113
110.000.110	5705499129403	110	140	124	71	143	113

Suitable for all upper parts and flanges with D=110mm or D=113mm.

**LOWER PART FOR SHOWER DRAIN TYPE 111**

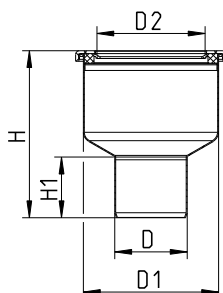
WITH SIDE INLETS



Type no.	EAN no.	D	D1	H	H1	H4	W1	D2
111.000.075	5705499107050	75	140	164	119	36	133	113

Suitable for all upper parts and flanges with D=110mm or D=113mm.

**LOWER PART FOR SHOWER DRAIN TYPE 150**



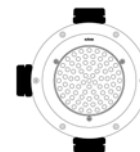
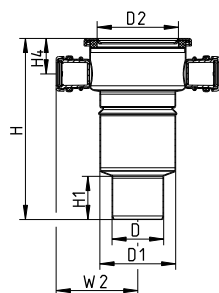
Type no.	EAN no.	D	D1	H	H1	D2
150.000.050	5705499107524	50	140	177	58	113
150.000.075	5705499107074	75	140	173	63	113
150.000.110	5705499107098	110	140	141	79	113

Suitable for all upper parts and flanges with D=110mm or D=113mm.

- without membrane flange

**LOWER PART FOR SHOWER DRAIN TYPE 151**

WITH SIDE INLETS

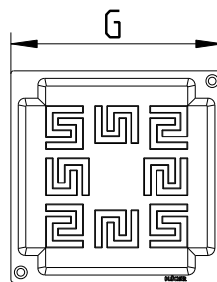


Type no.	EAN no.	D	D1	H	H1	H4	W2	D2
151.000.075	5705499107111	75	140	263	63	52	119	113
151.000.110	5705499107135	110	140	151	79	52	119	113

Suitable for all upper parts and flanges with D=110mm or D=113mm.

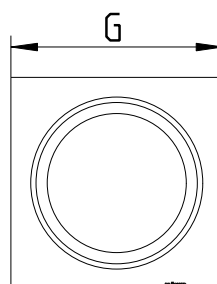
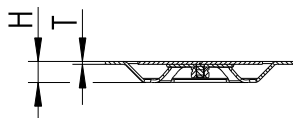
Gratings SQUARE

GRATING SQUARE ATHENS



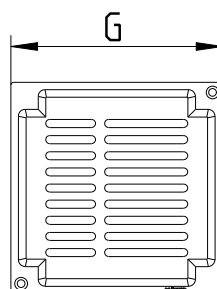
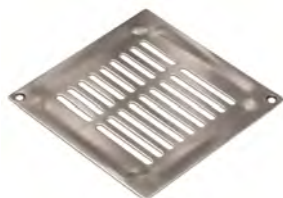
Type no.	EAN no.	G	T	Screws
610.155.427	5705499122848	140x140	2	2

GRATING SQUARE COPENHAGEN



Type no.	EAN no.	G	H	T	Screws
610.155.521	5705499102192	140x140	16	2	0

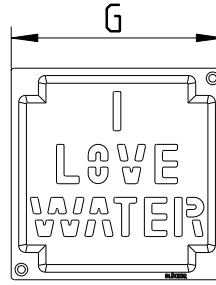
GRATING SQUARE DETROIT



Type no.	EAN no.	G	T	Screws
610.155.428	5705499122916	140x140	2	2

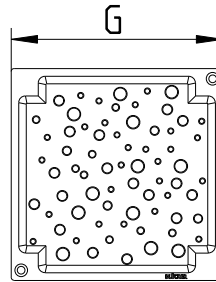
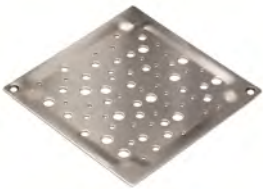
Gratings SQUARE

GRATING SQUARE NEW YORK



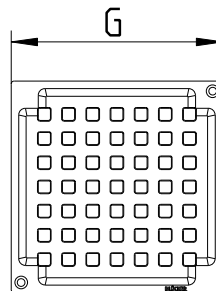
Type no.	EAN no.	G	T	Screws
610.155.429	5705499122985	140x140	2	2

GRATING SQUARE OSLO



Type no.	EAN no.	G	T	Screws
610.155.426	5705499122770	140x140	2	2

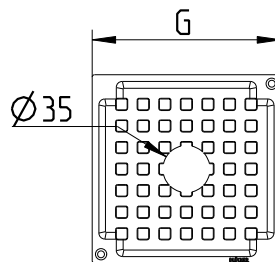
GRATING SQUARE VIENNA



Type no.	EAN no.	G	T	Screws
610.150.411	5705499101744	140x140	2	0
610.155.421	5705499102116	140x140	2	2

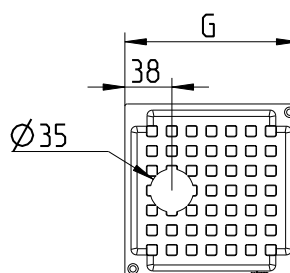
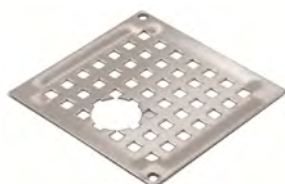
Gratings SQUARE

GRATING SQUARE VIENNA, CUT A



Type no.	EAN no.	G	T	Screws
610.155.441 A	5705499102161	140x140	2	2

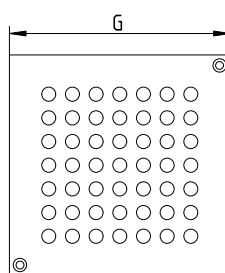
GRATING SQUARE VIENNA, CUT B



Type no.	EAN no.	G	T	Screws
610.155.441 B	5705499102178	140x140	2	2

GRATING SQUARE

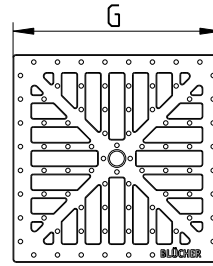
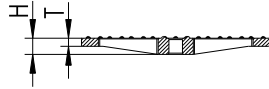
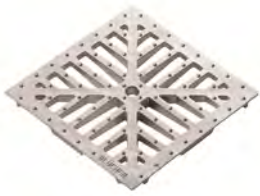
3MM



Type no.	EAN no.	G	T	Screws
610.155.425	5705499102147	140x140	3	2

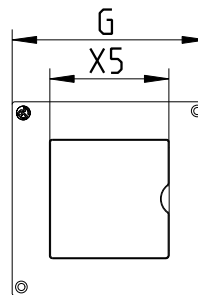
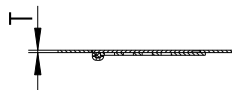
Gratings SQUARE

GRATING SQUARE HYGIENIC-PRO



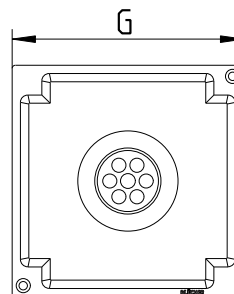
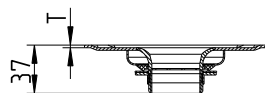
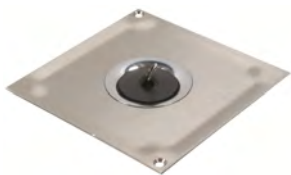
Type no.	EAN no.	G	H	T	EN1253 (kg)	Screws
610.155.500	5705499128369	140x140	12	6	L15 (3000)	0
610.155.501	5705499128376	140x140	12	6	L15 (3000)	2

HINGED GRATING SQUARE  
WITH HINGED COVER



Type no.	EAN no.	G	X5	T	Screws
610.155.550	5705499120004	140x140	86x86	2	2

BLANK PLATE SQUARE  
WITH 1 1/4" BOTTOM VALVE



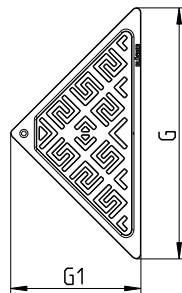
Type no.	EAN no.	G	T	Screws
610.155.451	5705499102185	140x140	2	2

BSP thread.

Cannot be mounted in drains type 110, 114, 140, 150, 160, 310, 314, 350 og 352 except in special cases - Please contact BLÜCHER

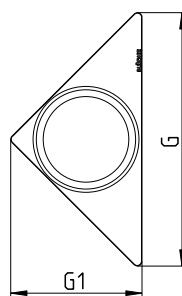
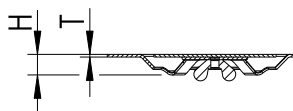
## Grating TRIO

### GRATING TRIO ATHENS



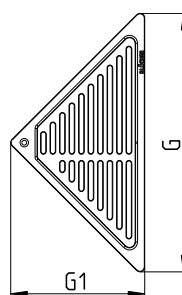
Type no.	EAN no.	G	G1	T	Screws
620.300.031	5705499122855	272	141	2	1

### GRATING TRIO COPENHAGEN



Type no.	EAN no.	G	G1	H	T	Screws
620.300.034	5705499123005	272	141	16	2	0

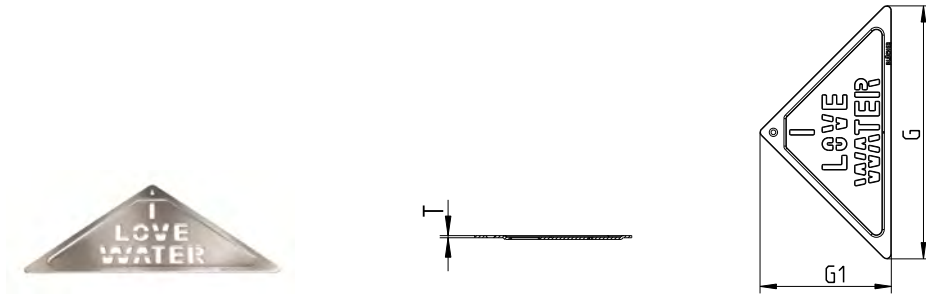
### GRATING TRIO DETROIT



Type no.	EAN no.	G	G1	T	Screws
620.300.032	5705499122923	272	141	2	1

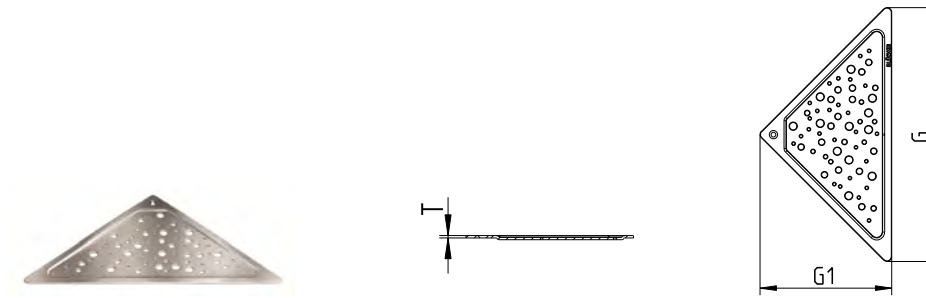
Grating TRIO

GRATING TRIO NEW YORK



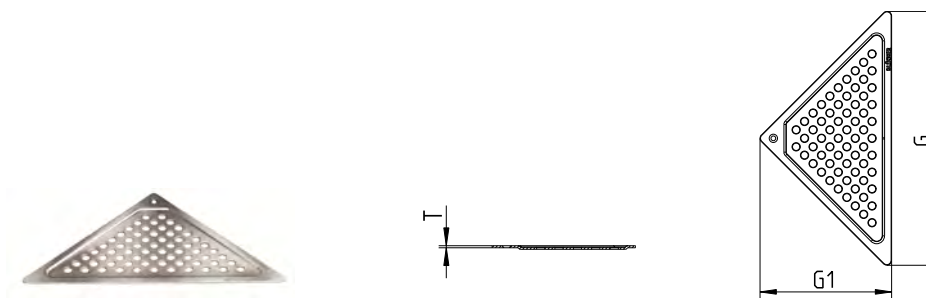
Type no.	EAN no.	G	G1	T	Screws
620.300.033	5705499122992	272	141	2	1

GRATING TRIO OSLO



Type no.	EAN no.	G	G1	T	Screws
620.300.030	5705499122787	272	141	2	1

GRATING TRIO VIENNA

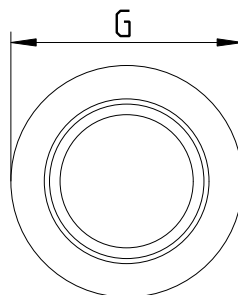
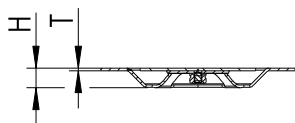


Type no.	EAN no.	G	G1	T	Screws
620.300.035	5705499123012	272	141	2	1



Gratings CIRCLE

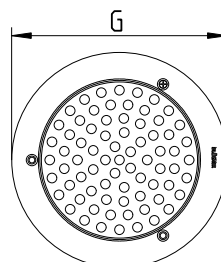
GRATING CIRCLE COPENHAGEN



Type no.	EAN no.	G	H	T	Screws
610.160.521	5705499114164	Ø160	16	2	0
651.155.521	5705499114317	Ø155	16	2	3

GRATING CIRCLE VIENNA

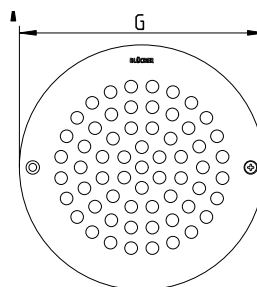
FOR VINYL FLOORS



Type no.	EAN no.	G	T	Screws
620.155.011	5705499102642	Ø155	1	3

GRATING CIRCLE VIENNA

FOR RESIN FLOORS

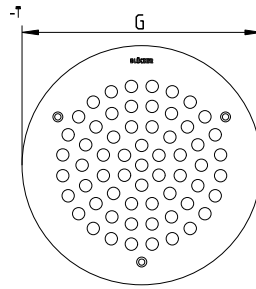


Type no.	EAN no.	G	T	Screws
620.155.041 S	5705499106084	Ø155	2	2

Gratings CIRCLE

**GRATING CIRCLE VIENNA (REPAIR)**

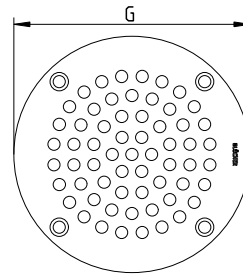
FOR VINYL FLOORS



Type no.	EAN no.	G	T	Screws
620.155.021	5705499102673	Ø155	2	3
620.155.021 S	5705499102697	Ø155	2	3

**GRATING CIRCLE VIENNA (REPAIR)**

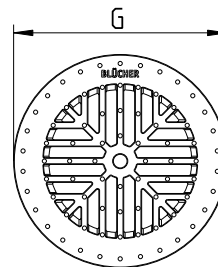
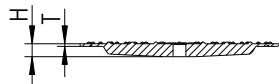
FOR CAST IRON DRAINS



Type no.	EAN no.	G	T	Screws
651.155.011	5705499103076	Ø155	2	4

**GRATING CIRCLE HYGIENIC-PRO**

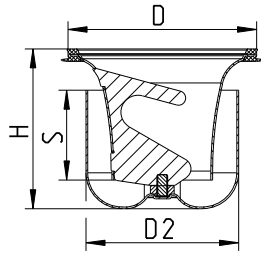
FOR RESIN FLOORS



Type no.	EAN no.	G	H	T	EN1253 (kg)	Screws
620.155.500	5705499128406	Ø155	10	2	L15 (3.000)	0
620.155.501	5705499128413	Ø155	10	2	L15 (3.000)	2

Water traps

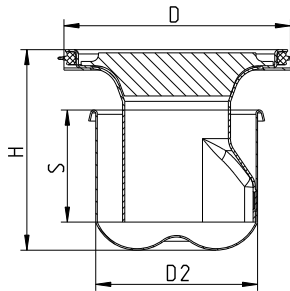
REMOVABLE TWO-PART WATER TRAP TYPE 502.050



Type no.	EAN no.	D	H	S	D2	Max Flow (l/s)
502.050.110	5705499124064	108	89	50	85	1.7

Accurate flow rate depending on type of drain and grating.

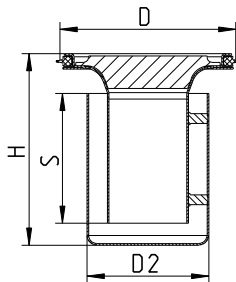
REMOVABLE WATER TRAP TYPE 502.052



Type no.	EAN no.	D	H	S	D2	Max Flow (l/s)
502.052.110	5705499105582	108	93	52	75	1.3

Accurate flow rate depending on type of drain and grating.

REMOVABLE WATER TRAP TYPE 502.082

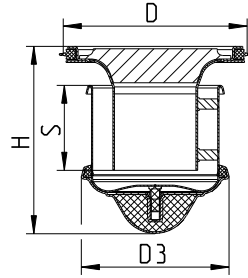


Type no.	EAN no.	D	H	S	D2	Max Flow (l/s)
502.082.110 S	5705499128468	108	118	80	75	1.2

Water seal height = 80mm.  
Fits into all drains with Ø110 mm vertical outlet.  
Accurate flow rate depending on type of drain and grating.

Water traps

**REMOVABLE WATER TRAP FIRE PROOF TYPE 502.052**

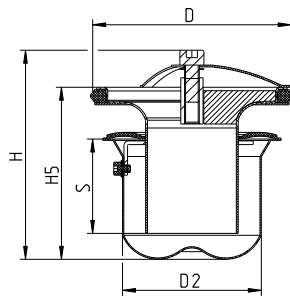


Type no.	EAN no.	D	H	S	D3	Max Flow (l/s)
502.052.110 FS	5705499120509	108	110	50	87	1.2

Fits only shower drains with vertical outlet D=50mm or D=75mm.  
Accurate flow rate depending on type of drain and grating.

**REMOVABLE MULTI WATER TRAP TYPE 503**

PREVENTS SMELL AND BACK FLOW

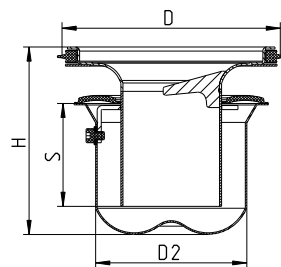


Type no.	EAN no.	D	H	H5	S	D2	Max Flow (l/s)
503.000.110	5705499118735	108	113	93	51	75	1.3

Accurate flow rate depending on type of drain and grating.

**REMOVABLE WATER TRAP TYPE 503.001**

PREVENTS SMELL

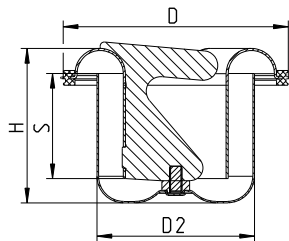


Type no.	EAN no.	D	H	S	D2	Max Flow (l/s)
503.001.110	5705499134728	108	93	51	75	1.3

Accurate flow rate depending on type of drain and grating.

Water traps

REMOVABLE TWO-PART WATER TRAP, LOW MODEL TYPE 506

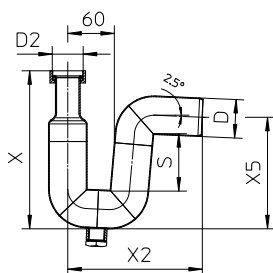


Type no.	EAN no.	D	H	S	D2	Max Flow (l/s)
506.050.110	5705499131864	108	74	50	75	0.6

Fits only into shower drains type 382.

P-TRAP 87.5° TYPE 525

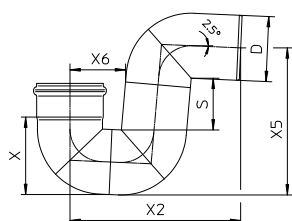
WITH COUPLING AND DRAIN PLUG



Type no.	EAN no.	D	S	D2	X	X2	X5
525.032.050 S	5705499114065	50	74	1¼"	205	175	145
525.040.050 S	5705499114072	50	74	1½"	205	175	145
525.050.050 S	5705499114089	50	74	2"	205	175	145

BSP thread.

P-TRAP 87.5° TYPE 525.090

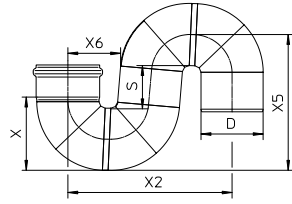


Type no.	EAN no.	D	S	X	X2	X5	X6	Min Flow (l/s)	Max Flow (l/s)
525.090.050 S	5705499101461	50	74	67	175	145	60	0.7	1.7
525.090.075 S	5705499101478	75	81	93	222	189	74	2.5	3.7
525.090.110 S	5705499101485	110	89	132	289	249	94	3.4	10.4

Accurate flow rate depending on installation.

Water traps

S-TRAP 180° TYPE 525.180

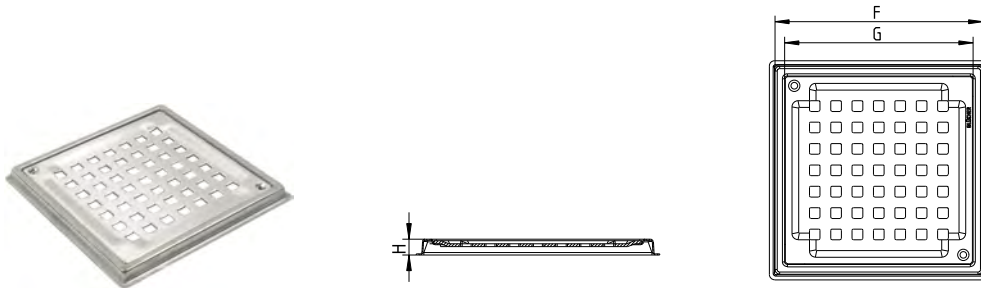


Type no.	EAN no.	D	S	X	X2	X5	X6
525.180.050 S	5705499114096	50	74	67	166	145	60
525.180.075 S	5705499114102	75	81	93	217	190	74
525.180.110 S	5705499114119	110	89	132	292	249	94

Others

**FRAME AND GRATING (REPAIR)**

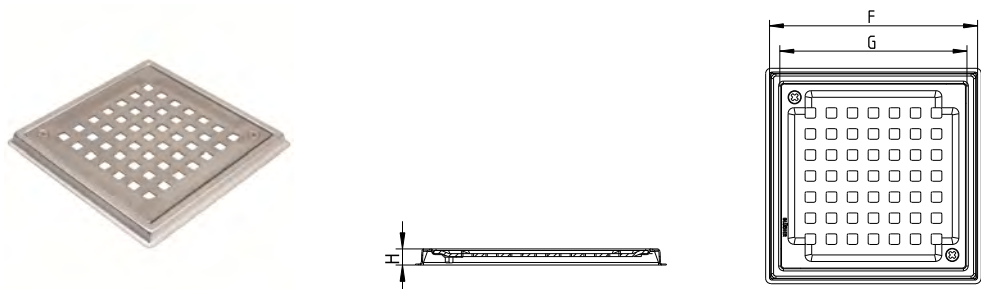
FOR SHOWER DRAINS TYPE 102, 103, 120, 140, 160 AND 161 PRODUCED BEFORE 1998



Type no.	EAN no.	F	G	H	Screws
610.150.410	5705499101706	155x155	140x140	10	2

**FRAME AND GRATING (REPAIR)**

FOR SHOWER DRAINS TYPE 102, 103, 120, 140, 160 AND 161 PRODUCED BEFORE 1998



Type no.	EAN no.	F	G	H	Screws
610.150.420	5705499101775	155x155	140x140	10	2

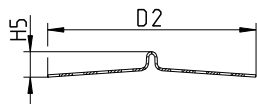
**FILTER BASKET FOR REMOVABLE TWO-PART WATER TRAP**



Type no.	EAN no.	H5	D2
502.000.000 S	5705499124101	24	106

Others

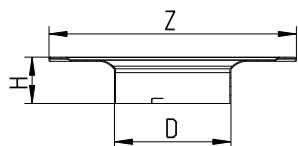
SCREEN FOR REMOVABLE WATER TRAP



Type no.	EAN no.	H5	D2
501.000.000.05 S	5705499114003	10	90

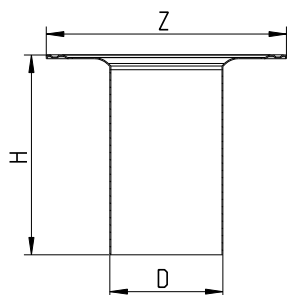
Fits trap type 502.052

FLANGE FOR LIQUID MEMBRANE TYPE 326.300



Type no.	EAN no.	D	Z	H
326.300.000	5705499107173	113	Ø240	45

FLANGE FOR LIQUID MEMBRANE, EXTRA LENGTH TYPE 326.300

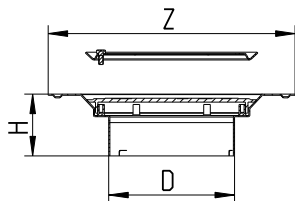


Type no.	EAN no.	D	Z	H
326.300.001	5705499107258	113	Ø240	200



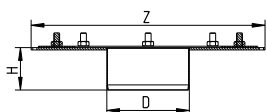
Others

FLANGE FOR SHEET MEMBRANE



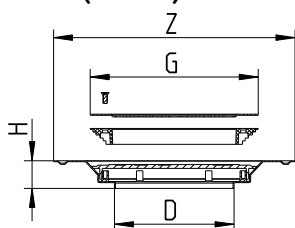
Type no.	EAN no.	D	Z	H
325.300.000	5705499107159	113	Ø222	56

MEMBRANE CLAMPING FLANGE FOR LOWER PART TYPE 325



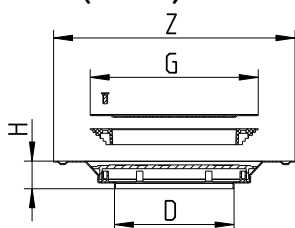
Type no.	EAN no.	D	Z	H
325.302.000	5705499107920	113	320	58

FLANGE AND GRATING FOR VINYL FLOORS (REPAIR)



Type no.	EAN no.	D	Z	G	H
299.300.000	5705499107357	110	Ø222	Ø155	26

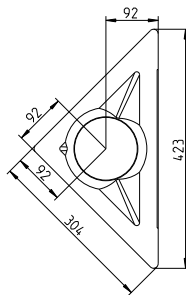
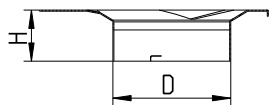
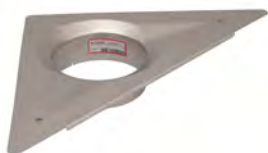
FLANGE AND GRATING FOR VINYL FLOORS (REPAIR)



Type no.	EAN no.	D	Z	G	H
299.140.000	5705499100891	113	188x188	Ø136	28

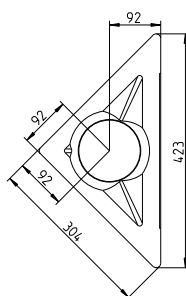
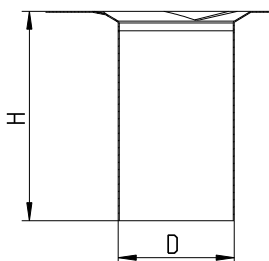
Others

TRIANGULAR FLANGE FOR LIQUID MEMBRANE



Type no.	EAN no.	D	H
326.003.000	5705499120240	110	49

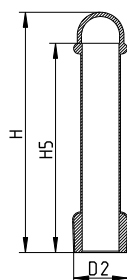
TRIANGULAR FLANGE FOR LIQUID MEMBRANE, EXTRA LENGTH



Type no.	EAN no.	D	H
326.003.001	5705499121896	113	204

STAND PIPE 120 MM FOR BOTTOM VALVE

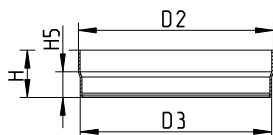
FOR GRATING 610.150.451 AND 610.155.451



Type no.	EAN no.	H	H5	D2
600.000.000	5705499101591	170	148	38

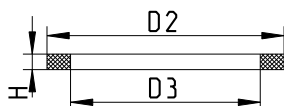
Others

EXTENSION RING



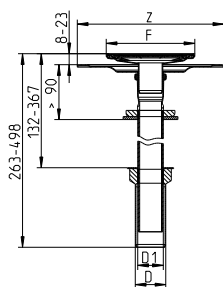
Type no.	EAN no.	H	H5	D2	D3
620.200.005 S	5705499105971	28	15	116	113
620.200.022 S	5705499127676	100	15	116	113

SPACING RING



Type no.	EAN no.	H	D2	D3
620.300.001	5705499105612	10	150	120

INSERT FOR CAST IRON SHOWER DRAIN, EXTRA LENGTH TYPE 130

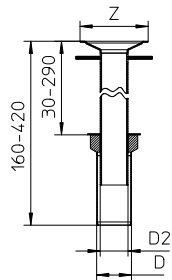


Type no.	EAN no.	D	D1	F	Z
130.155.040	5705499100150	50	42	145x145	Ø240

Fits D=75mm and D=82mm.

Others

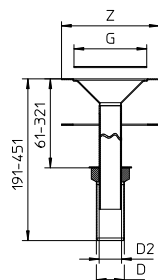
**INSERT FOR SQUARE CAST IRON SHOWER DRAIN TYPE 135**



Type no.	EAN no.	D	Z	D2
135.000.040	5705499100167	50	Ø98	40

Fits D=75mm and D=82mm.

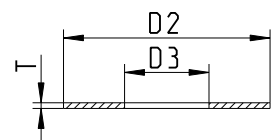
**INSERT FOR ROUND CAST IRON SHOWER DRAIN TYPE 135**



Type no.	EAN no.	D	Z	G	D2
135.130.040	5705499100174	50	Ø175	Ø130	40

Fits D=75mm and D=82mm.

**ROSETTE**

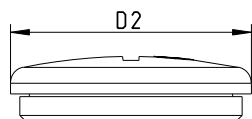


Type no.	EAN no.	D2	D3	T
620.300.013	5705499107821	110	45	3

Others

**ACCESS PLUG**

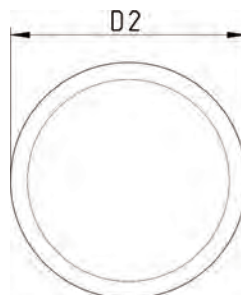
FOR SHOWER DRAIN TYPE 102, 202 AND 302 PRODUCED BEFORE 2000



Type no.	EAN no.	D2
615.200.001	5705499102444	45

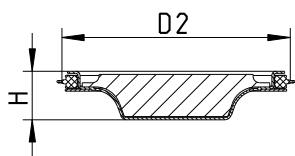
**ACCESS PLUG**

FOR SHOWER DRAIN TYPE 102, 202 AND 302



Type no.	EAN no.	H	D2
620.300.016	5705499118315	8	44

**PLUG FOR SHOWER DRAIN**

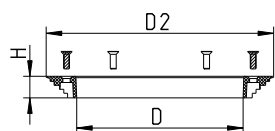


Type no.	EAN no.	H	D2
620.300.019 S	5705499118568	23	108

Others

**CLAMPING RING**

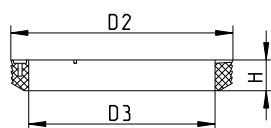
FOR VINYL FLOORS OR FOR SHEET MEMBRANE



Type no.	EAN no.	D	H	D2
620.300.004	5705499105667	113	15	155

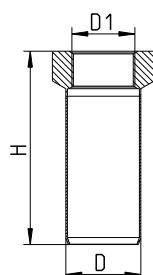
**CLAMPING RING (REPAIR)**

FOR VINYL DRAINS PRODUCED BEFORE 1991



Type no.	EAN no.	H	D2	D3
620.140.000	5705499102536	20	137	115

**ADAPTOR TYPE 851**

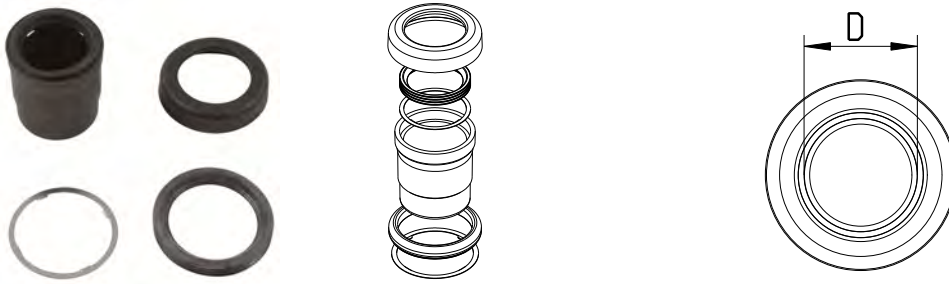


Type no.	EAN no.	D	D1	H
851.130.040	5705499403220	50	1¼	130

D1 specified in inches ("). BSP thread.

Others

**SIDE INLET COMPLETE**

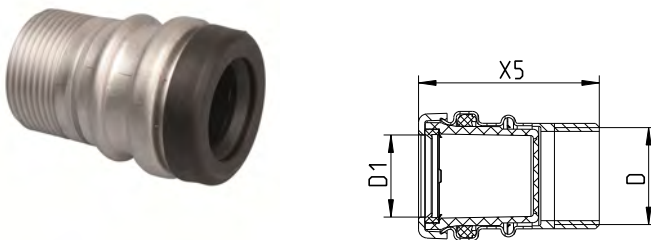


Type no.	EAN no.	D
620.300.008	5705499106695	32

Inlet diameter can be changed to D=40mm

**SIDE INLET TYPE 880 (REPAIR)**

FOR SHOWER DRAINS PRODUCED BEFORE 1998

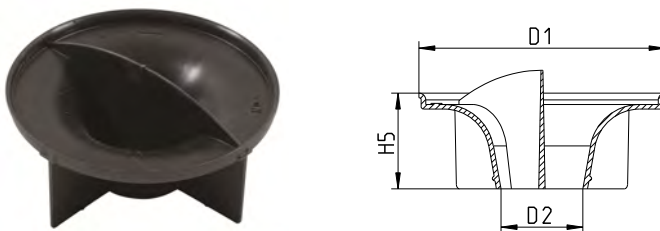


Type no.	EAN no.	D (")	D1	X5
880.032.000	5705499114331	1¼	32	73

BSP thread.

**DEFLECTOR**

FOR DRAINS WITH SIDE INLETS

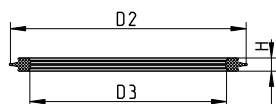


Type no.	EAN no.	D1	H5	D2
620.300.009	5705499106701	108	42	36

Others

**SEALING RING**

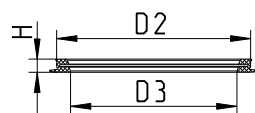
FOR WATER TRAP TYPE 502.052.110



Type no.	EAN no.	H	D2	D3	Material
620.300.010	5705499106718	6	110	50	EPDM

**SEALING RING**

FOR WATER TRAP TYPE 502.050.110



Type no.	EAN no.	H	D2	D3	Material
620.300.042	5705499127331	7	102	87	EPDM
620.300.042 N	5705499138993	7	102	87	NBR

**SET OF SCREWS**



Type no.	EAN no.	Designation
620.300.007	5705499106688	Set of screws for grating (drain for concrete)
620.300.011	5705499102772	Set of screws for grating (drain for vinyl)
620.300.012	5705499106725	Set of screws for clamping ring



Others

**TAB BENDING TOOL**



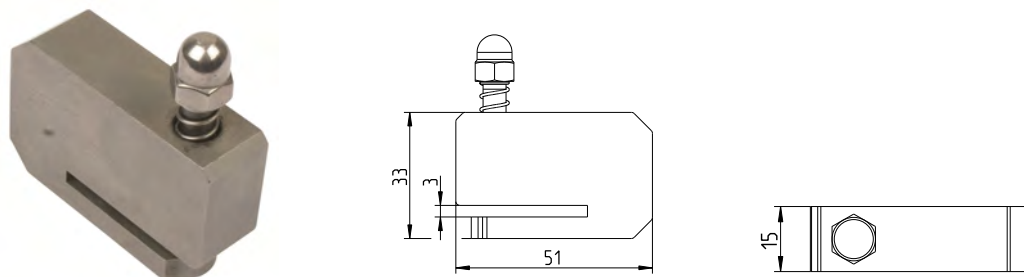
Type no.	EAN no.
001.000.001	5705499124088

**VINYL CUTTING TEMPLATE**  
FOR CUTTING IN VINYL FLOORS



Type no.	EAN no.
001.200.001	5705499124095

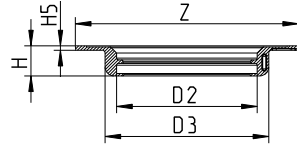
**VINYL HOLE PUNCHING TOOL**



Type no.	EAN no.
001.200.002	5705499128239

Others

MOUNTING PLATE



Type no.	EAN no.	Z	H	H5	D2	D3
620.300.039	5705499126976	250x250	34	5	158	184

## Drains for housing and commercial applications with universal lower part and range of mounting sets



### Shower drains For tiled and vinyl floors Square, triangular, circular or linear

#### Applications

For tiled and vinyl floors in:

- Private housing bathrooms
- Toilets and showers in hotels, hospitals, fitness centres, etc.

#### Details

- Same lower parts for all types of flooring, combinable with all mounting sets
- Square, triangular, circular or linear frame
- Brushed grain finish
- Low frame height
- Grate with starlock screw-system
- Stainless steel AISI304/EN 1.4301 or AISI316L/EN 1.4404

#### Variants

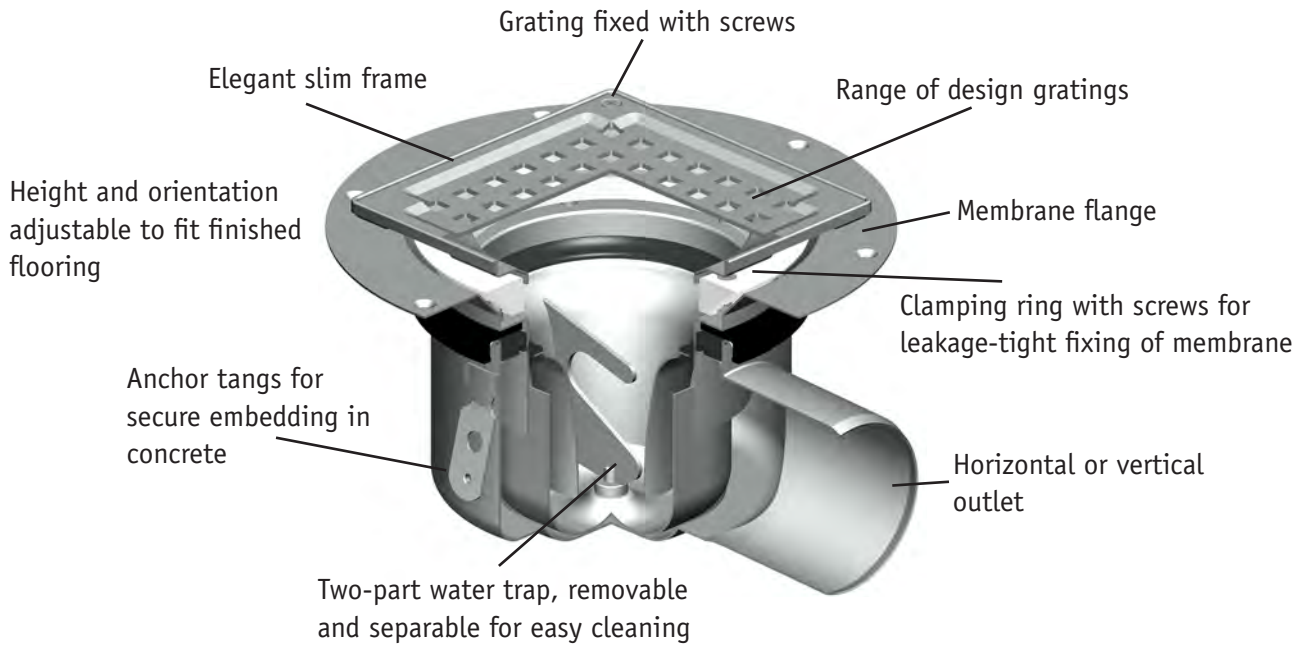
- Side inlets Ø32/40 mm
- Vertical or horizontal outlet
- Flange for liquid or sheet membrane
- Adjustable height, rotation and tilt

#### Options

- Removable water trap
- Design gratings in 4 shapes and numerous designs

#### Series

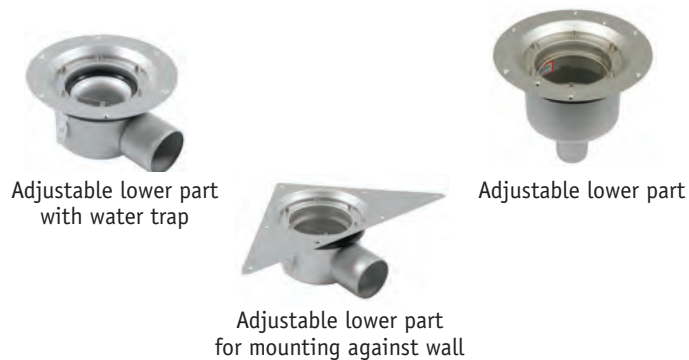
- Series 200 for vinyl floors
- Series 300 with liquid or sheet membrane flange for concrete and tiled floors



## Mounting sets, examples

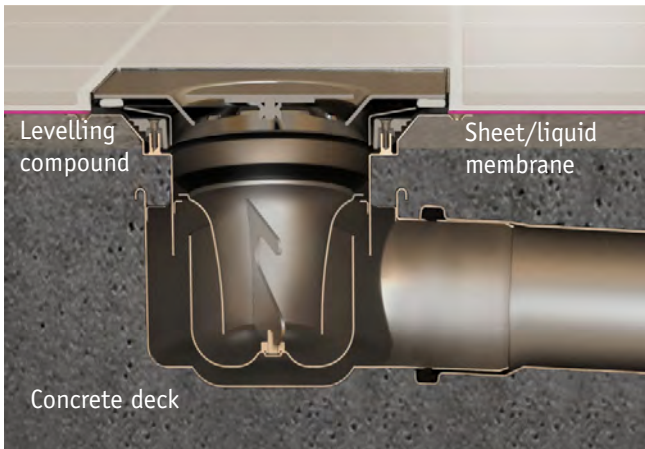
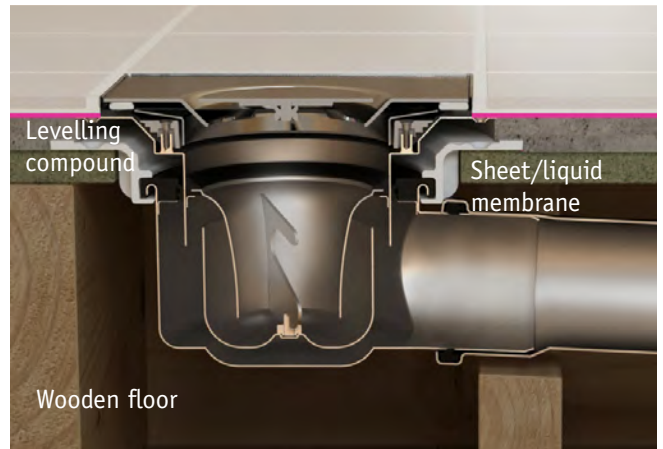
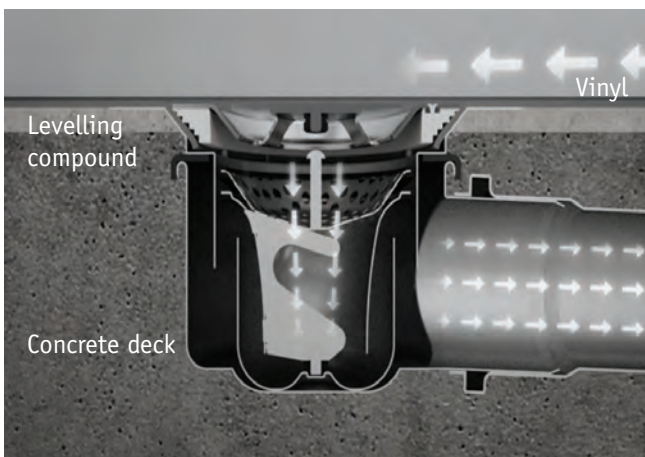


## Lower parts, examples



Example: BLÜCHER® Drain Multi with mounting set LINE Tokyo

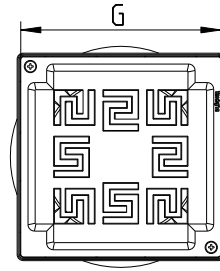
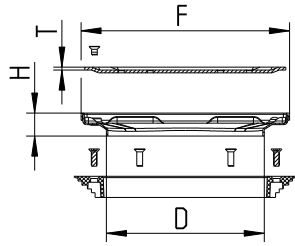
## Installation examples

**Concrete and tiles with sheet or liquid membrane****Concrete and tiles with sheet or liquid membrane****Vinyl****Two-part removable water trap**

Due to its design the water trap has unique self-cleansing properties, and the slanted handle does not gather hair or dirt. Separable to facilitate cleaning. After cleaning, assemble the two parts by screwing them together tightly.

**MOUNTING SET MULTI SQUARE ATHENS TYPE 620**

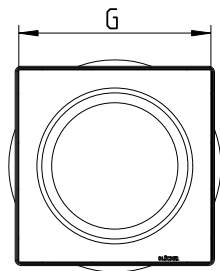
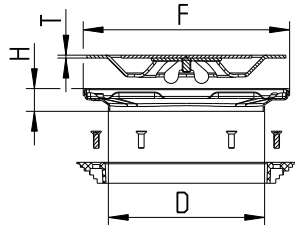
WITH CLAMPING RING



Type no.	EAN no.	D	F	G	H	T	Screws
620.200.018	5705499127225	110	145x145	140x140	16	2	2

**MOUNTING SET MULTI SQUARE COPENHAGEN TYPE 620**

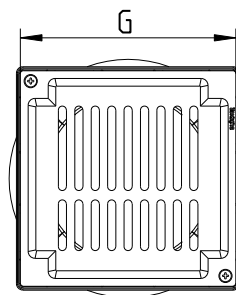
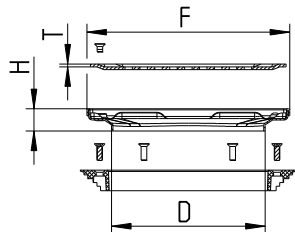
WITH CLAMPING RING



Type no.	EAN no.	D	F	G	H	T	Screws
620.200.015	5705499118711	110	145x145	140x140	16	2	0

**MOUNTING SET MULTI SQUARE DETROIT TYPE 620**

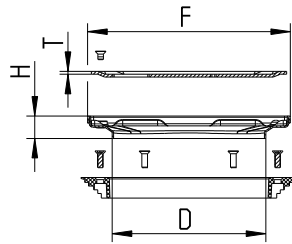
WITH CLAMPING RING



Type no.	EAN no.	D	F	G	H	T	Screws
620.200.019	5705499127232	110	145x145	140x140	16	2	2

**MOUNTING SET MULTI SQUARE NEW YORK TYPE 620**

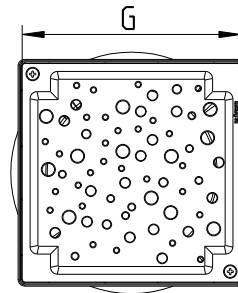
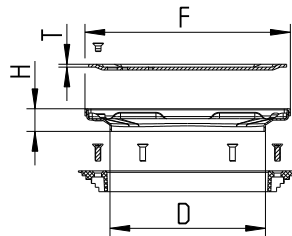
WITH CLAMPING RING



Type no.	EAN no.	D	F	G	H	T	Screws
620.200.021	5705499127256	110	145x145	140x140	16	2	2

**MOUNTING SET MULTI SQUARE OSLO TYPE 620**

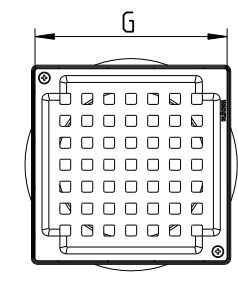
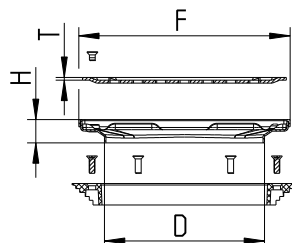
WITH CLAMPING RING



Type no.	EAN no.	D	F	G	H	T	Screws
620.200.020	5705499127249	110	145x145	140x140	16	2	2

**MOUNTING SET MULTI SQUARE VIENNA TYPE 620**

WITH CLAMPING RING

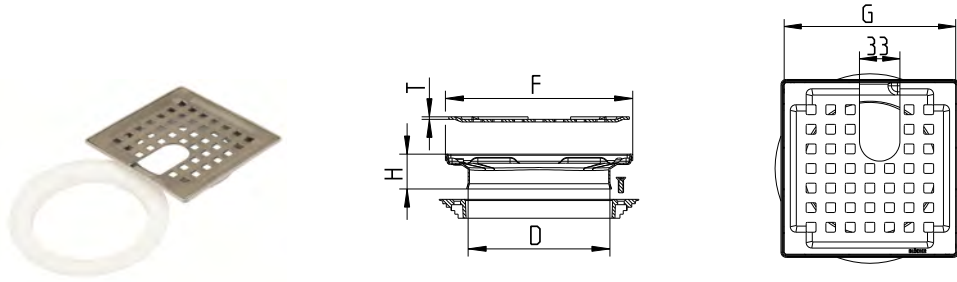


Type no.	EAN no.	D	F	G	H	T	Screws
620.200.013	5705499127218	110	145x145	140x140	27	2	2
620.200.017	5705499123517	110	145x145	140x140	27	2	0



**MOUNTING SET MULTI SQUARE VIENNA TYPE 620, CUT C**

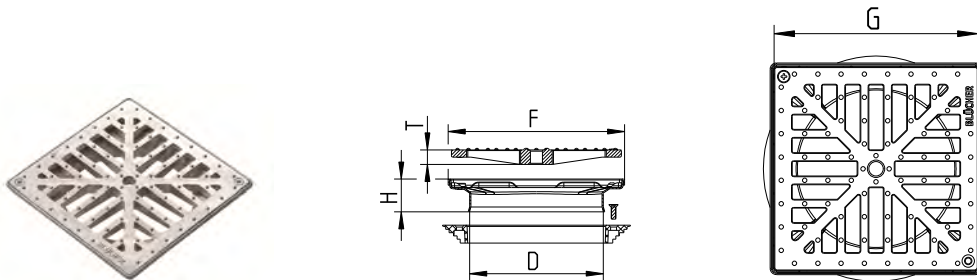
WITH CLAMPING RING



Type no.	EAN no.	D	F	G	H	T	Screws
620.200.017 C	5705499127638	110	145x145	140x140	27	2	0

**MOUNTING SET MULTI SQUARE HYGIENIC-PRO TYPE 620**

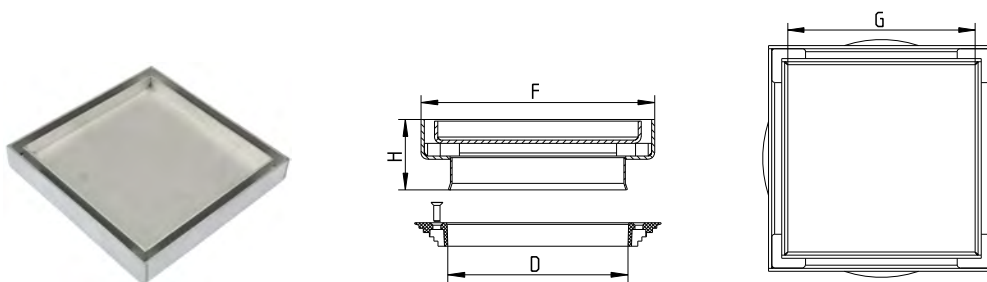
WITH CLAMPING RING



Type no.	EAN no.	D	F	G	H	T	EN1253 (kg)	Screws
620.200.023	5705499129328	110	145x145	140x140	27	12	L15 (3.000)	2
620.200.024	5705499129335	110	145x145	140x140	27	12	L15 (3.000)	0

**MOUNTING SET MULTI SQUARE TOKYO TYPE 620**

WITH CLAMPING RING

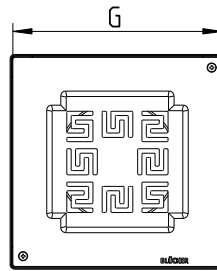
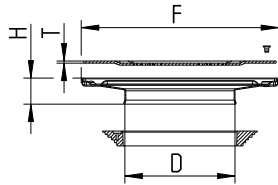


Type no.	EAN no.	D	F	G	H
620.200.025	5705499131963	110	147x147	130x130	44



**MOUNTING SET MULTI SQUARE ATHENS TYPE 650**

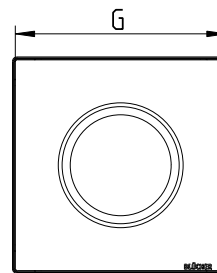
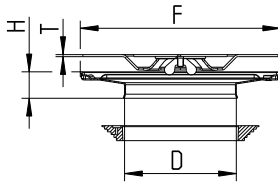
WITH CLAMPING RING



Type no.	EAN no.	D	F	G	H	T	Screws
650.200.106	5705499127133	110	197x197	192x192	26	2	2

**MOUNTING SET MULTI SQUARE COPENHAGEN TYPE 650**

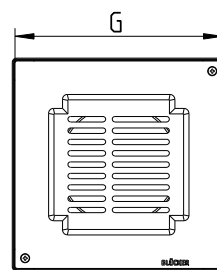
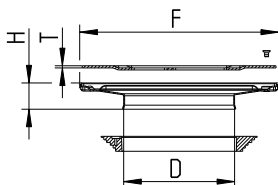
WITH CLAMPING RING



Type no.	EAN no.	D	F	G	H	T	Screws
650.200.002	5705499127126	110	197x197	192x192	26	2	0

**MOUNTING SET MULTI SQUARE DETROIT TYPE 650**

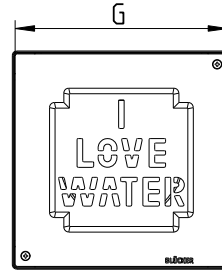
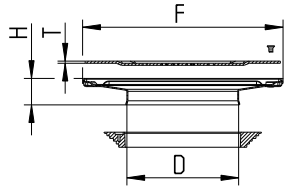
WITH CLAMPING RING



Type no.	EAN no.	D	F	G	H	T	Screws
650.200.105	5705499127140	110	197x197	192x192	26	2	2

**MOUNTING SET MULTI SQUARE NEW YORK TYPE 650**

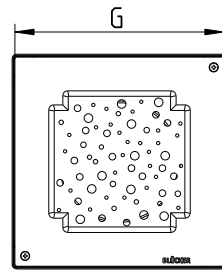
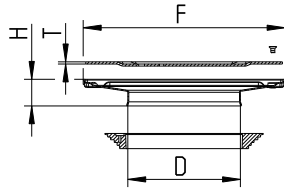
WITH CLAMPING RING



Type no.	EAN no.	D	F	G	H	T	Screws
650.200.104	5705499127164	110	197x197	192x192	26	2	2

**MOUNTING SET MULTI SQUARE OSLO TYPE 650**

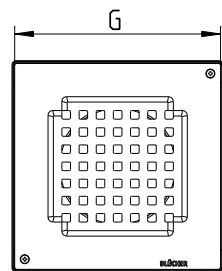
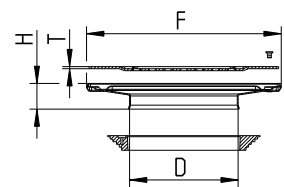
WITH CLAMPING RING



Type no.	EAN no.	D	F	G	H	T	Screws
650.200.103	5705499127157	110	197x197	192x192	26	2	2

**MOUNTING SET MULTI SQUARE VIENNA TYPE 650**

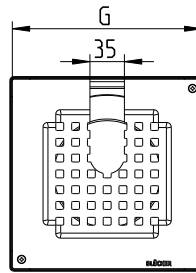
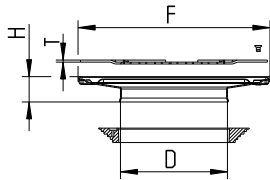
WITH CLAMPING RING



Type no.	EAN no.	D	F	G	H	T	Screws
650.200.001	5705499127195	110	197x197	192x192	26	2	0
650.200.101	5705499127171	110	197x197	192x192	26	2	2

**MOUNTING SET MULTI SQUARE VIENNA TYPE 650, CUT C**

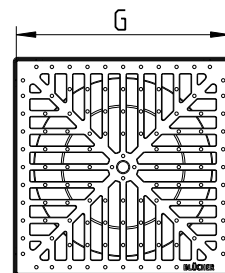
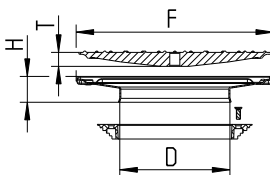
WITH CLAMPING RING



Type no.	EAN no.	D	F	G	H	T	Screws
650.200.001 C	5705499127201	110	197x197	192x192	26	2	0
650.200.101 C	5705499127188	110	197x197	192x192	26	2	2

**MOUNTING SET MULTI SQUARE HYGIENIC-PRO TYPE 650**

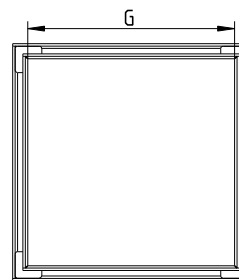
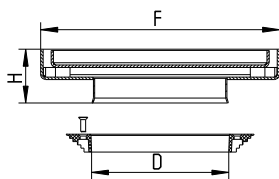
WITH CLAMPING RING



Type no.	EAN no.	D	F	G	H	T	EN1253 (kg)	Screws
650.200.007	5705499129281	110	197x197	192x192	26	14	L15 (3.000)	0
650.200.107	5705499129298	110	197x197	192x192	26	14	L15 (3.000)	2

**MOUNTING SET MULTI SQUARE TOKYO TYPE 650**

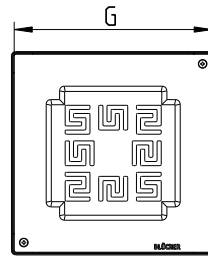
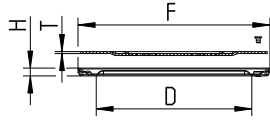
WITH CLAMPING RING



Type no.	EAN no.	D	F	G	H
650.200.008	5705499131970	110	197x197	172x172	44

**MOUNTING SET MULTI SQUARE ATHENS TYPE 650**

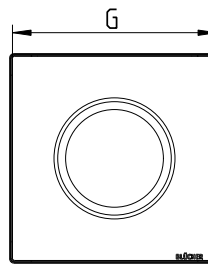
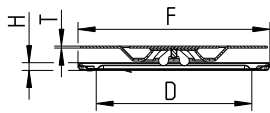
WITHOUT CLAMPING RING



Type no.	EAN no.	D	F	G	H	T	Screws
650.201.106	5705499127041	160	197x197	192x192	8	2	2

**MOUNTING SET MULTI SQUARE COPENHAGEN TYPE 650**

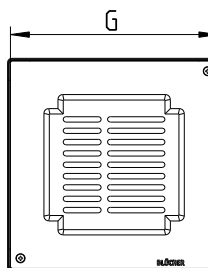
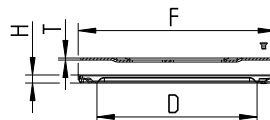
WITHOUT CLAMPING RING



Type no.	EAN no.	D	F	G	H	T	Screws
650.201.002	5705499127034	160	197x197	192x192	8	2	0

**MOUNTING SET MULTI SQUARE DETROIT TYPE 650**

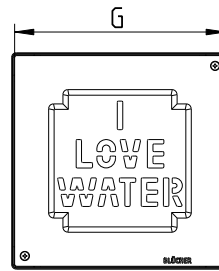
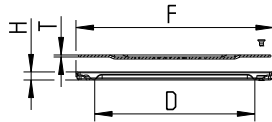
WITHOUT CLAMPING RING



Type no.	EAN no.	D	F	G	H	T	Screws
650.201.105	5705499127058	160	197x197	192x192	8	2	2

**MOUNTING SET MULTI SQUARE NEW YORK TYPE 650**

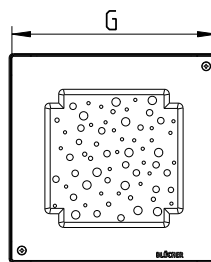
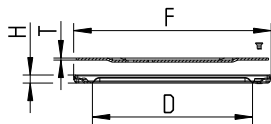
WITHOUT CLAMPING RING



Type no.	EAN no.	D	F	G	H	T	Screws
650.201.104	5705499127072	160	197x197	192x192	8	2	2

**MOUNTING SET MULTI SQUARE OSLO TYPE 650**

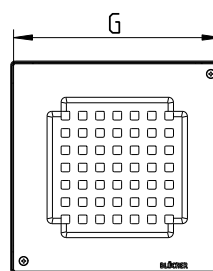
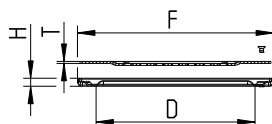
WITHOUT CLAMPING RING



Type no.	EAN no.	D	F	G	H	T	Screws
650.201.103	5705499127065	160	197x197	192x192	8	2	2

**MOUNTING SET MULTI SQUARE VIENNA TYPE 650**

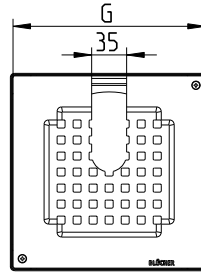
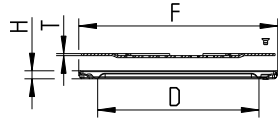
WITHOUT CLAMPING RING



Type no.	EAN no.	D	F	G	H	T	Screws
650.201.001	5705499127102	160	197x197	192x192	8	2	0
650.201.101	5705499127089	160	197x197	192x192	8	2	2

**MOUNTING SET MULTI SQUARE VIENNA TYPE 650, CUT C**

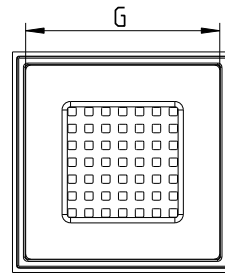
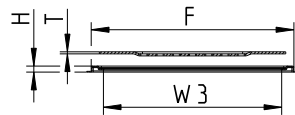
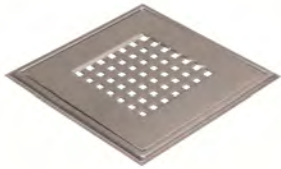
WITHOUT CLAMPING RING



Type no.	EAN no.	D	F	G	H	T	Screws
650.201.001 C	5705499127119	160	197x197	192x192	8	2	0
650.201.101 C	5705499127096	160	197x197	192x192	8	2	2

**MOUNTING SET MULTI SQUARE VIENNA TYPE 650**

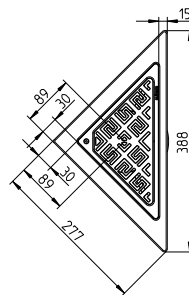
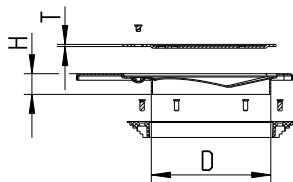
WITHOUT CLAMPING RING



Type no.	EAN no.	F	G	H	W3	T	Screws
650.200.410	5705499102970	200x200	184x184	6	176	2	0
650.200.420	5705499103014	200x200	184x184	6	176	2	2

**MOUNTING SET MULTI TRIO ATHENS**

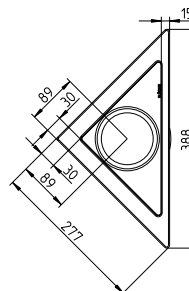
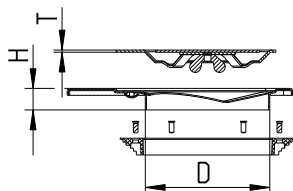
FOR CORNER INSTALLATION, WITH CLAMPING RING



Type no.	EAN no.	D	H	T	Screws
620.260.006	5705499127294	110	19	2	1

**MOUNTING SET MULTI TRIO COPENHAGEN**

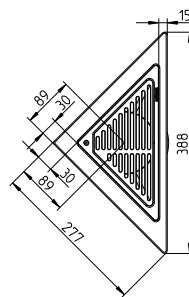
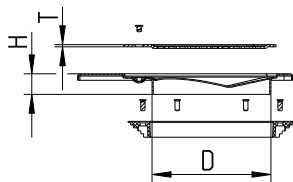
FOR CORNER INSTALLATION, WITH CLAMPING RING



Type no.	EAN no.	D	H	T	Screws
620.260.002	5705499121476	110	19	2	0

**MOUNTING SET MULTI TRIO DETROIT**

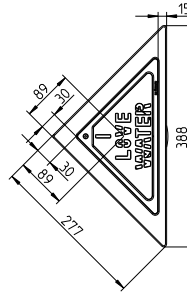
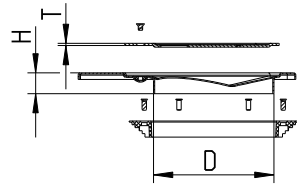
FOR CORNER INSTALLATION, WITH CLAMPING RING



Type no.	EAN no.	D	H	T	Screws
620.260.005	5705499127287	110	19	2	1

**MOUNTING SET MULTI TRIO NEW YORK**

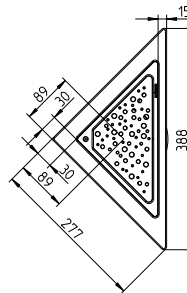
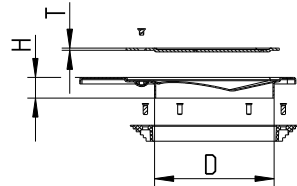
FOR CORNER INSTALLATION, WITH CLAMPING RING



Type no.	EAN no.	D	H	T	Screws
620.260.004	5705499127270	110	19	2	1

**MOUNTING SET MULTI TRIO OSLO**

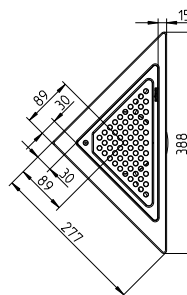
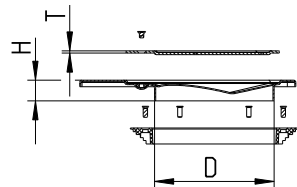
FOR CORNER INSTALLATION, WITH CLAMPING RING



Type no.	EAN no.	D	H	T	Screws
620.260.003	5705499127263	110	19	2	1

**MOUNTING SET MULTI TRIO VIENNA**

FOR CORNER INSTALLATION, WITH CLAMPING RING

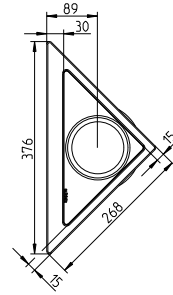
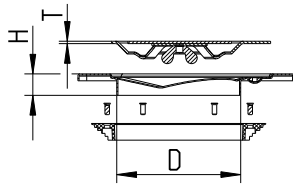


Type no.	EAN no.	D	H	T	Screws
620.260.001	5705499121469	110	19	2	1



**MOUNTING SET MULTI TRIO COPENHAGEN**

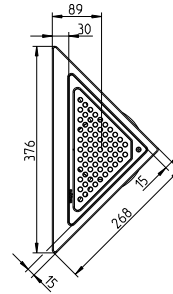
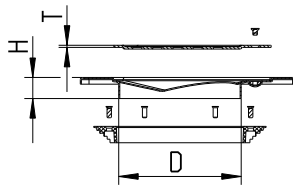
FOR INSTALLATION ALONG WALL, WITH CLAMPING RING



Type no.	EAN no.	D	H	T	Screws
620.270.002	5705499121490	110	19	2	0

**MOUNTING SET MULTI TRIO VIENNA**

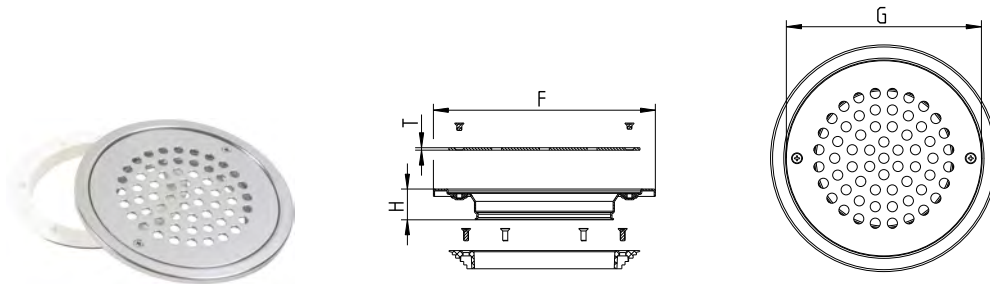
FOR INSTALLATION ALONG WALL, WITH CLAMPING RING



Type no.	EAN no.	D	H	T	Screws
620.270.001	5705499121483	110	19	2	1

**MOUNTING SET MULTI CIRCLE VIENNA**

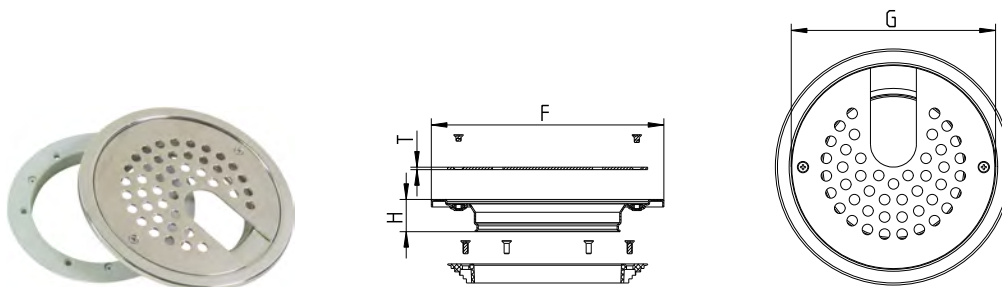
WITH CLAMPING RING



Type no.	EAN no.	F	G	H	T	Screws
620.200.003 S	5705499105957	Ø180	Ø155	25	2	2

**MOUNTING SET MULTI CIRCLE VIENNA, CUT C**

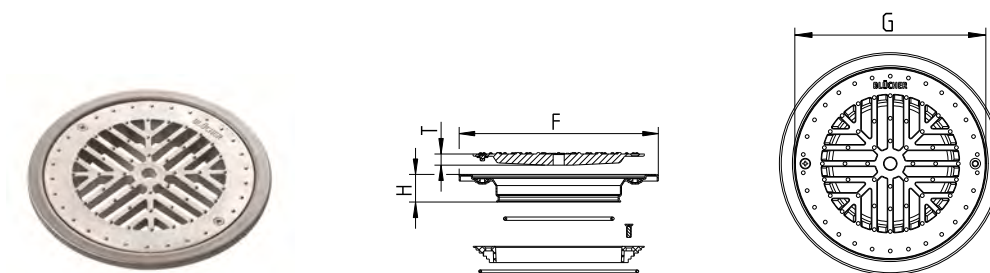
WITH CLAMPING RING



Type no.	EAN no.	F	G	H	T
620.200.003 CS	5705499107814	180	155	25	2

**MOUNTING SET MULTI CIRCLE HYGIENIC-PRO**

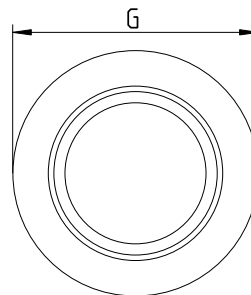
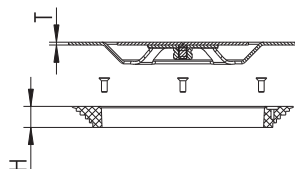
WITH CLAMPING RING



Type no.	EAN no.	F	G	H	T	EN1253 (kg)	Screws
620.300.043	5705499129304	Ø180	Ø155	25	10	L15 (3.000)	2
620.300.044	5705499129311	Ø180	Ø155	25	10	L15 (3.000)	0

**MOUNTING SET MULTI CIRCLE COPENHAGEN**

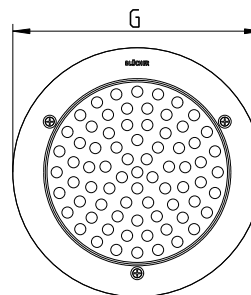
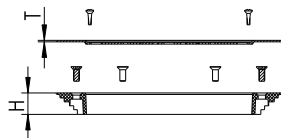
WITH CLAMPING RING



Type no.	EAN no.	G	H	T	Screws
620.300.040	5705499127300	Ø155	15	2	3
620.300.041	5705499127317	Ø160	15	2	0

**MOUNTING SET MULTI CIRCLE VIENNA**

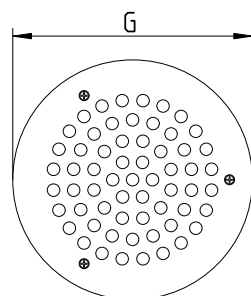
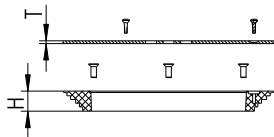
WITH CLAMPING RING



Type no.	EAN no.	G	H	T	Screws
620.300.002	5705499105629	Ø155	15	1	3

**MOUNTING SET MULTI CIRCLE VIENNA**

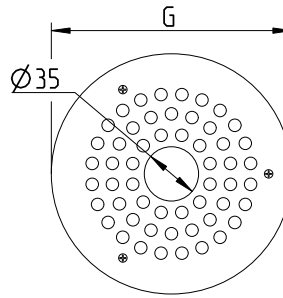
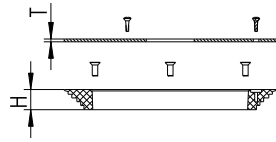
WITH CLAMPING RING



Type no.	EAN no.	G	H	T	Screws
620.300.003	5705499106008	Ø155	15	2	3
620.300.046	5705499138078	Ø155	15	2	0

**MOUNTING SET MULTI CIRCLE VIENNA, CUT A**

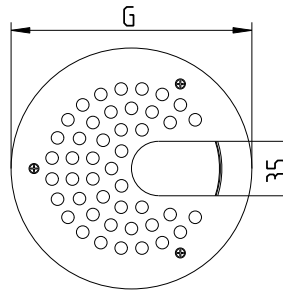
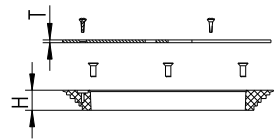
WITH CLAMPING RING



Type no.	EAN no.	G	H	T	Screws
620.300.003 A	5705499107708	Ø155	15	2	3

**MOUNTING SET MULTI CIRCLE VIENNA, CUT C**

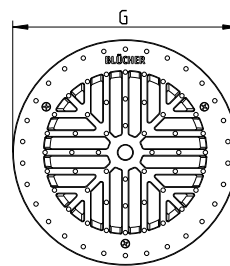
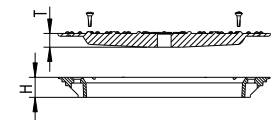
WITH CLAMPING RING



Type no.	EAN no.	G	H	T	Screws
620.300.003 C	5705499107746	Ø155	15	2	3

**MOUNTING SET MULTI CIRCLE HYGIENIC-PRO**

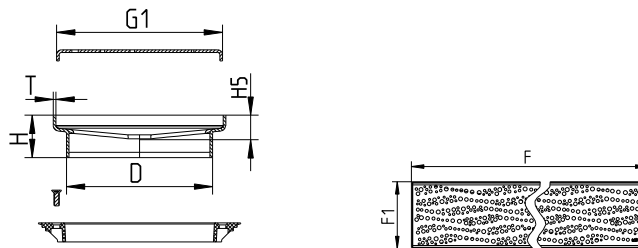
WITH CLAMPING RING



Type no.	EAN no.	G	H	T	EN1253 (kg)
620.300.045	5705499135299	155	15	10	L15 (3000)

**MOUNTING SET MULTI LINE STOCKHOLM TYPE 650**

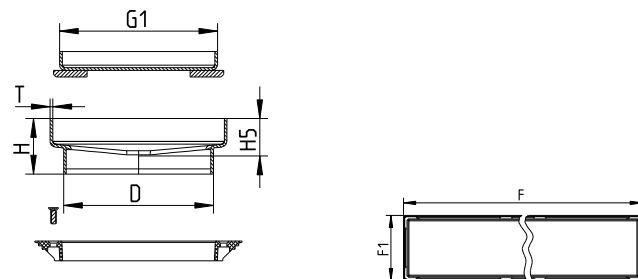
WITH CLAMPING RING



Type no.	EAN no.	D	F	F1	G1	H	H5	T
650.300.080	5705499135367	112	800	132	127	32	17	2
650.300.090	5705499135374	112	900	132	127	32	17	2
650.300.100	5705499135381	112	1000	132	127	32	17	2
650.300.120	5705499135398	112	1200	132	127	32	17	2

**MOUNTING SET MULTI LINE TOKYO TYPE 650**

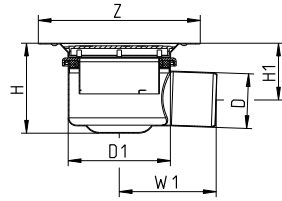
WITH CLAMPING RING



Type no.	EAN no.	D	F	F1	G1	H	H5	T
650.350.080	5705499135404	112	800	132	118	41	26	2
650.350.090	5705499135411	112	900	132	118	41	26	2
650.350.100	5705499135428	112	1000	132	118	41	26	2
650.350.120	5705499135435	112	1200	132	118	41	26	2

**ADJUSTABLE LOWER PART MULTI TYPE 210**

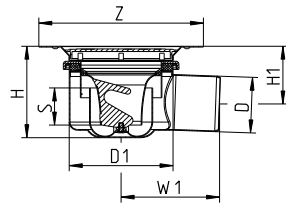
FOR MOUNTING SET



Type no.	EAN no.	D	D1	Z	H	H1	W1
210.200.075	5705499105674	75	140	Ø222	123-153	78-108	133
210.200.110	5705499129243	110	140	Ø222	147-197	92-142	143

**ADJUSTABLE LOWER PART MULTI TYPE 210**

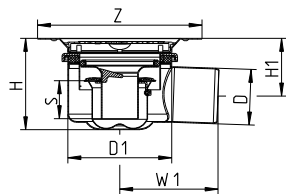
FOR MOUNTING SET, WITH REMOVABLE WATER TRAP



Type no.	EAN no.	D	D1	Z	H	H1	S	W1
210.200.075 V	5705499105797	75	140	Ø222	123-153	78-108	50	133
210.200.110 V	5705499129267	110	140	Ø222	147-197	92-142	50	143

**ADJUSTABLE LOWER PART MULTI TYPE 210**

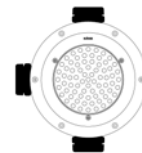
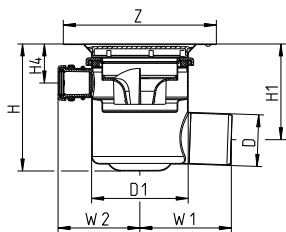
FOR MOUNTING SET, WITH REMOVABLE WATER TRAP THAT PREVENTS SMELL



Type no.	EAN no.	D	D1	Z	H	H1	S	W1
210.200.075 LV	5705499135015	75	140	Ø222	123-153	78-108	51	133

**ADJUSTABLE LOWER PART MULTI TYPE 211**

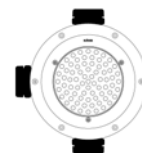
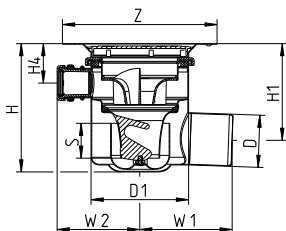
FOR MOUNTING SET, WITH SIDE INLETS



Type no.	EAN no.	D	D1	Z	H	H1	H4	W1	W2
211.200.075	5705499105698	75	140	Ø222	184-194	139-149	57-67	133	119

**ADJUSTABLE LOWER PART MULTI TYPE 211**

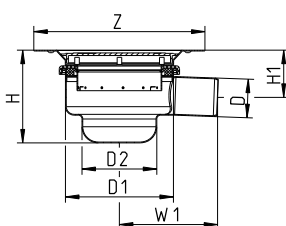
FOR MOUNTING SET, WITH SIDE INLETS AND REMOVABLE WATER TRAP



Type no.	EAN no.	D	D1	Z	H	H1	H4	S	W1	W2
211.200.075 V	5705499105810	75	140	Ø222	184-194	139-149	57-67	50	133	119

**ADJUSTABLE LOWER PART MULTI, LOW MODEL TYPE 214**

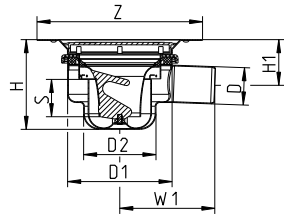
FOR MOUNTING SET



Type no.	EAN no.	D	D1	Z	H	H1	W1	D2
214.210.050	5705499107463	50	140	Ø222	120-130	60-70	127	97

**ADJUSTABLE LOWER PART MULTI, LOW MODEL TYPE 214**

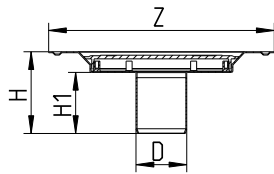
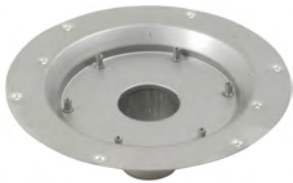
FOR MOUNTING SET, WITH REMOVABLE WATER TRAP



Type no.	EAN no.	D	D1	Z	H	H1	S	W1	D2
214.210.050 V	5705499107487	50	140	Ø222	120-130	60-70	50	127	97

**LOWER PART MULTI, LOW MODEL TYPE 240**

FOR MOUNTING SET

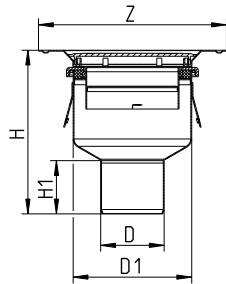


Type no.	EAN no.	D	Z	H	H1
240.200.050	5705499107616	50	Ø222	81	60

Not for removable water trap

**ADJUSTABLE LOWER PART MULTI TYPE 250**

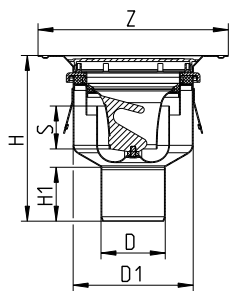
FOR MOUNTING SET



Type no.	EAN no.	D	D1	Z	H	H1
250.200.050	5705499118346	50	140	Ø222	197-227	58
250.200.075	5705499105735	75	140	Ø222	193-223	63

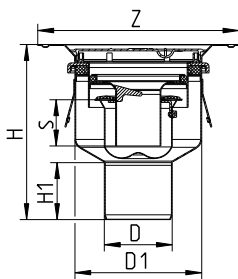


**ADJUSTABLE LOWER PART MULTI TYPE 250**  
FOR MOUNTING SET, WITH REMOVABLE WATER TRAP



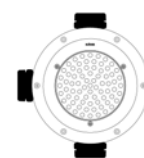
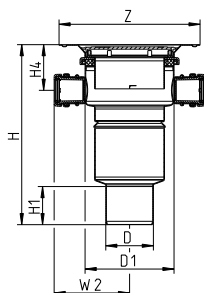
Type no.	EAN no.	D	D1	Z	H	H1	S
250.200.050 V	5705499118360	50	140	Ø222	197-227	58	50
250.200.075 V	5705499105872	75	140	Ø222	193-223	63	50
250.200.110 V	5705499131949	110	140	Ø222	161-191	79	50

**ADJUSTABLE LOWER PART MULTI TYPE 250**  
FOR MOUNTING SET, WITH REMOVABLE WATER TRAP THAT PREVENTS SMELL



Type no.	EAN no.	D	D1	Z	H	H1	S
250.200.075 LV	5705499135022	75	140	Ø222	193-223	63	50

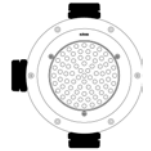
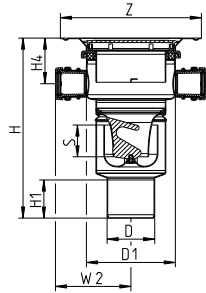
**ADJUSTABLE LOWER PART MULTI TYPE 251**  
FOR MOUNTING SET, WITH SIDE INLETS



Type no.	EAN no.	D	D1	Z	H	H1	H4	W2
251.200.075	5705499105759	75	140	Ø222	283-313	63	72-102	119

**ADJUSTABLE LOWER PART MULTI TYPE 251**

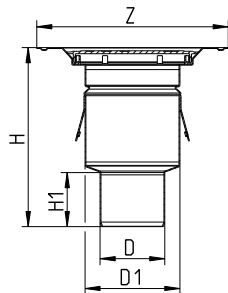
FOR MOUNTING SET, WITH SIDE INLETS AND REMOVABLE WATER TRAP



Type no.	EAN no.	D	D1	Z	H	H1	H4	S	W2
251.200.075 V	5705499105896	75	140	Ø222	283-313	63	72-102	50	119
251.200.110 V	5705499133271	110	140	Ø222	176-206	79	72-102	50	119

**LOWER PART MULTI TYPE 260**

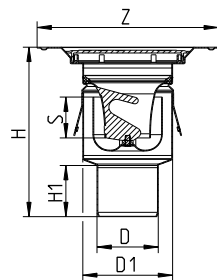
FOR MOUNTING SET



Type no.	EAN no.	D	D1	Z	H	H1
260.200.075	5705499105773	75	110	Ø222	208	63

**LOWER PART MULTI TYPE 260**

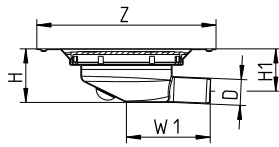
FOR MOUNTING SET, WITH REMOVABLE WATER TRAP



Type no.	EAN no.	D	D1	Z	H	H1	S
260.200.075 V	5705499105919	75	110	Ø222	208	63	50

**MINI LOWER PART MULTI TYPE 281**

FOR MOUNTING SET

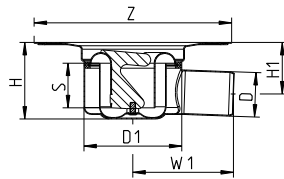


Type no.	EAN no.	D	Z	H	H1	W1
281.200.032	5705499107630	32	Ø222	67	52	104

Not for removable water trap. Adaptor for D=40mm included.

**LOWER PART MULTI, LOW MODEL TYPE 382**

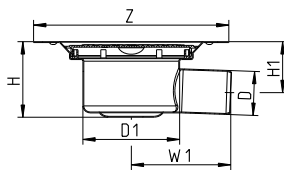
FOR MOUNTING SET, WITH LIQUID MEMBRANE FLANGE AND REMOVABLE WATER TRAP



Type no.	EAN no.	D	D1	Z	H	H1	S	W1
382.200.050 V	5705499133295	50	110	Ø222	86	58	50	113

**LOWER PART MULTI, LOW MODEL TYPE 383**

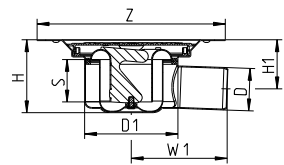
FOR MOUNTING SET



Type no.	EAN no.	D	D1	Z	H	H1	W1
383.200.050	5705499133288	50	110	Ø222	86	58	113

**LOWER PART MULTI, LOW MODEL TYPE 383**

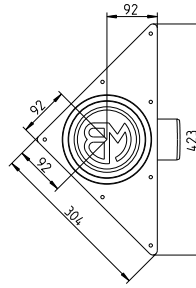
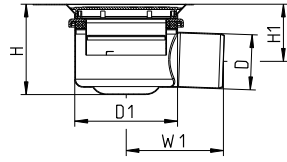
FOR MOUNTING SET, WITH REMOVABLE WATER TRAP



Type no.	EAN no.	D	D1	Z	H	H1	S	W1
383.200.050 V	5705499131796	50	110	Ø222	86	58	50	113

**ADJUSTABLE LOWER PART MULTI FOR TRIO TYPE 210**

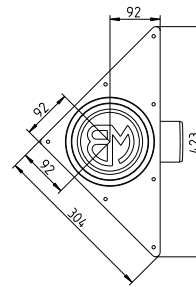
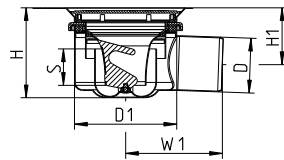
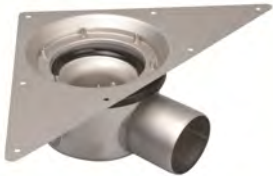
FOR FREE PLACING, FOR MOUNTING SET



Type no.	EAN no.	D	D1	H	H1	W1
210.260.075	5705499121445	75	140	123-153	78-108	133

**ADJUSTABLE LOWER PART MULTI FOR TRIO TYPE 210**

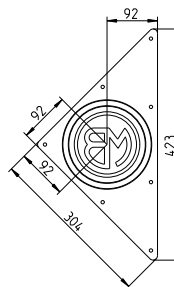
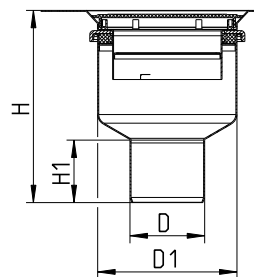
FOR FREE PLACING, FOR MOUNTING SET, WITH REMOVABLE WATER TRAP



Type no.	EAN no.	D	D1	H	H1	S	W1
210.260.075 V	5705499121520	75	140	123-153	78-108	50	133

**ADJUSTABLE LOWER PART MULTI FOR TRIO TYPE 250**

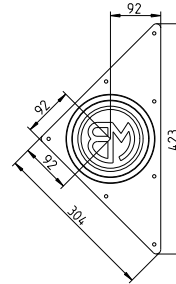
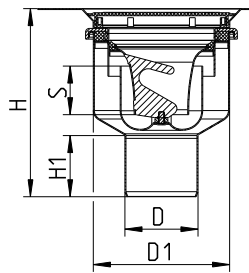
FOR FREE PLACING, FOR MOUNTING SET



Type no.	EAN no.	D	D1	H	H1
250.260.075	5705499121452	75	140	193-223	63

**ADJUSTABLE LOWER PART MULTI FOR TRIO TYPE 250**

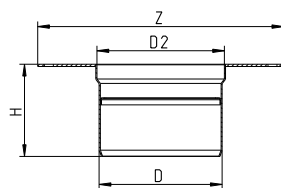
FOR FREE PLACING, FOR MOUNTING SET, WITH REMOVABLE WATER TRAP



Type no.	EAN no.	D	D1	H	H1	S
250.260.075 V	5705499121537	75	140	193-223	63	50

**LOWER PART MULTI TYPE 110**

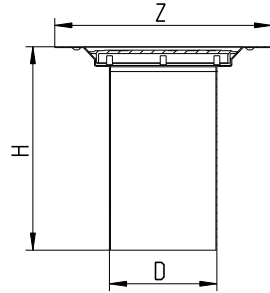
FOR MOUNTING SET, WITH LIQUID MEMBRANE FLANGE



Type no.	EAN no.	D	Z	H	D2
100.000.110	5705499135442	110	Ø220	83	114

**UPPER PART CIRCLE FOR MULTI, EXTRA LENGTH TYPE 210**

WITHOUT SUPPORTING RING



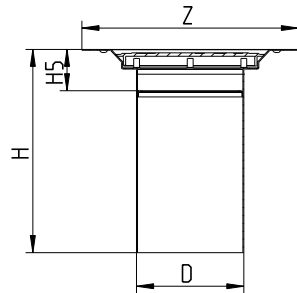
Type no.	EAN no.	D	Z	H
210.300.001	5705499117981	110	Ø222	209

Suitable for all adjustable lower parts MULTI with one or more of the following characteristics:

- horizontal outlet
- outlet D=110mm
- side inlets

**UPPER PART CIRCLE FOR MULTI, EXTRA LENGTH TYPE 250**

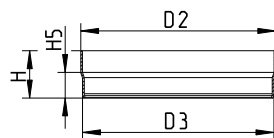
WITH SUPPORTING RING FOR WATER TRAP



Type no.	EAN no.	D	Z	H	H5
250.300.001	5705499118001	110	Ø222	209	43

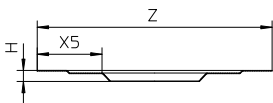
Suitable for adjustable lower parts MULTI type 250 with outlet D=50mm or D=75mm.

**EXTENSION RING**



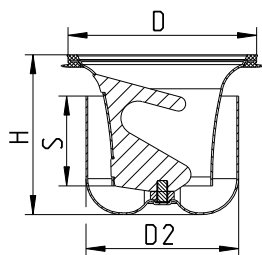
Type no.	EAN no.	H	H5	D2	D3
620.200.005 S	5705499105971	28	15	116	113
620.200.022 S	5705499127676	100	15	116	113

**FLANGE FOR LIQUID MEMBRANE**



Type no.	EAN no.	Z	H	X5
620.200.006 S	5705499105988	Ø363	17	100

**REMOVABLE TWO-PART WATER TRAP TYPE 502.050**

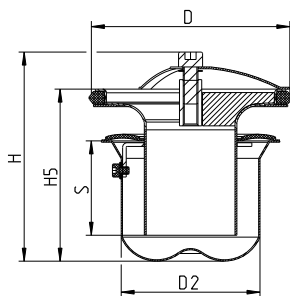


Type no.	EAN no.	D	H	S	D2	Max Flow (l/s)
502.050.110	5705499124064	108	89	50	85	1.7

Accurate flow rate depending on type of drain and grating.

**REMOVABLE MULTI WATER TRAP TYPE 503**

PREVENTS SMELL AND BACK FLOW

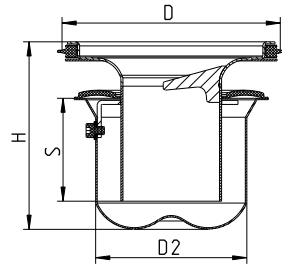


Type no.	EAN no.	D	H	H5	S	D2	Max Flow (l/s)
503.000.110	5705499118735	108	113	93	51	75	1.3

Accurate flow rate depending on type of drain and grating.

**REMOVABLE WATER TRAP TYPE 503.001**

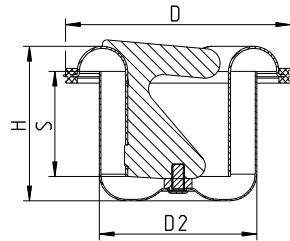
PREVENTS SMELL



Type no.	EAN no.	D	H	S	D2	Max Flow (l/s)
503.001.110	5705499134728	108	93	51	75	1.3

Accurate flow rate depending on type of drain and grating.

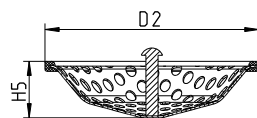
**REMOVABLE TWO-PART WATER TRAP, LOW MODEL TYPE 506**



Type no.	EAN no.	D	H	S	D2	Max Flow (l/s)
506.050.110	5705499131864	108	74	50	75	0.6

Fits only into lower part MULTI type 382 and 383

**FILTER BASKET FOR REMOVABLE TWO-PART WATER TRAP**



Type no.	EAN no.	H5	D2
502.000.000 S	5705499124101	24	106



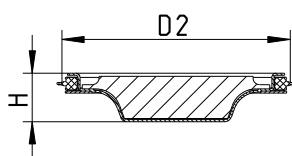
**O-RING**

FOR PRODUCT 620.200.006



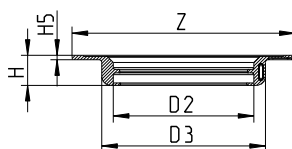
Type no.	EAN no.
620.200.007	5705499105995

**PLUG**



Type no.	EAN no.	H	D2
620.300.019 S	5705499118568	23	108

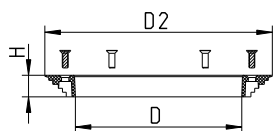
**MOUNTING PLATE**



Type no.	EAN no.	Z	H	H5	D2	D3
620.300.039	5705499126976	250x250	34	5	158	184

**CLAMPING RING**

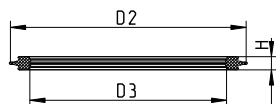
FOR VINYL FLOORS OR FOR SHEET MEMBRANE



Type no.	EAN no.	D	H	D2
620.300.004	5705499105667	113	15	155

**SEALING RING**

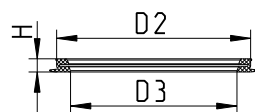
FOR WATER TRAP TYPE 502.052.110



Type no.	EAN no.	H	D2	D3	Material
620.300.010	5705499106718	6	110	50	EPDM

**SEALING RING**

FOR WATER TRAP TYPE 502.050.110



Type no.	EAN no.	H	D2	D3	Material
620.300.042	5705499127331	7	102	87	EPDM
620.300.042 N	5705499138993	7	102	87	NBR

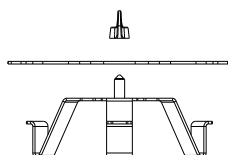
**SET OF SCREWS**



Type no.	EAN no.	Designation
620.300.007	5705499106688	Set of screws for grating (drain for concrete)
620.300.011	5705499102772	Set of screws for grating (drain for vinyl)
620.300.012	5705499106725	Set of screws for clamping ring

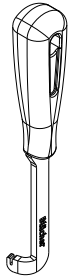
**VINYL CUTTING TEMPLATE**

FOR CUTTING IN VINYL FLOORS



Type no.	EAN no.
001.200.001	5705499124095

TAB BENDING TOOL



Type no.

EAN no.

001.000.001

5705499124088

## Shower channels for housing and commercial applications



### Height-adjustable

### No permanent connection between wall and floor

#### Applications

For tiled and vinyl flooring in:

- Private housing bathrooms
- Toilets and showers in hotels, hospitals, fitness centres, etc.

#### Details

- **NEW: One model for concrete/tiles can be installed with outlet left or right and against wall(s) or away from walls**
- 20 mm frame width
- 50 mm end outlet
- All in stainless steel AISI 304/EN 1.4301, brush finish
- Adjustable frame height
- Secured grate providing rat stop

#### Options

- OD40 mm outlet part without water trap
- OD75 mm water trap - horizontal or 45°
- Side inlet connection
- 6 different design gratings

#### Variants

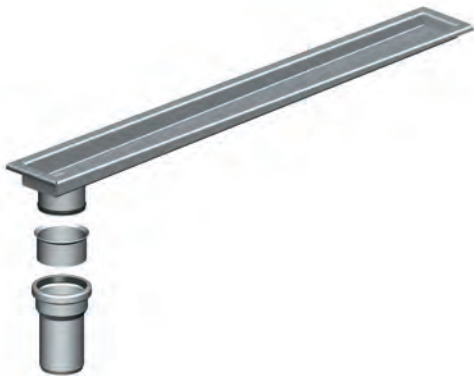
- 300-700-800-900-1000 mm standard lengths
- Up to 2000 mm length as customized channel

#### Series

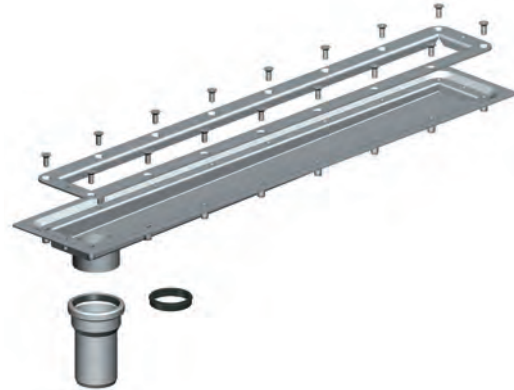
- Series 178 for tiled floors without membrane
- Series 275 for vinyl floors
- Series 378 for tiled floors with liquid membrane
- Series 398 for tiled floors with sheet membrane

## Complete drains

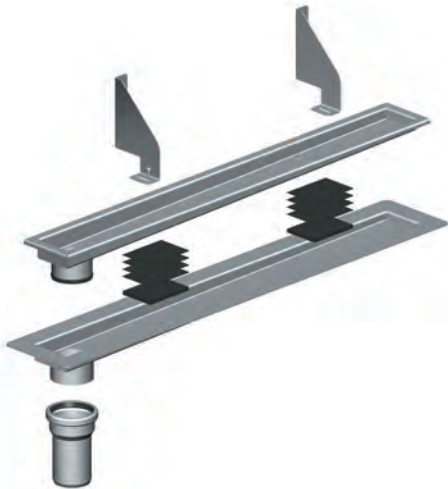
Series 178 for tiled floor without membrane



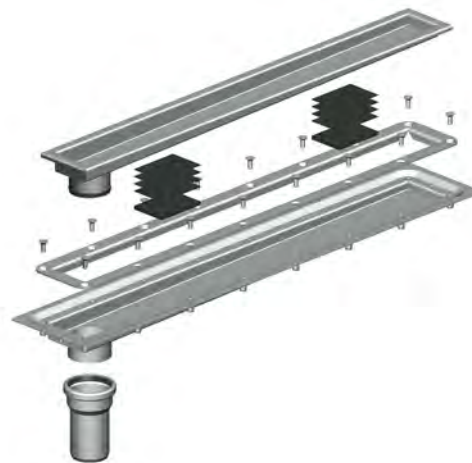
Series 275 for vinyl floor



Series 378 for tiled floor with liquid membrane



Series 398 for tiled floor with sheet membrane



### Complete shower channel

#### Channel

Series 178 1-part channel or series 275, 378 and 398 adjustable 2-part shower channel. Standard OD50 mm end outlet included.

Series 378 and 398 come with rubber pads for height adjustment.

Series 378 comes with removable mounting brackets.

#### Grating

No standard grating is included - selected design grating to be ordered separately.

#### Water trap

Water trap with casing and stand pipe not included - to be ordered separately. To be fitted during installation of the channel, cannot be retro-fitted.

Side inlet OD40 mm is an accessory - to be ordered separately.

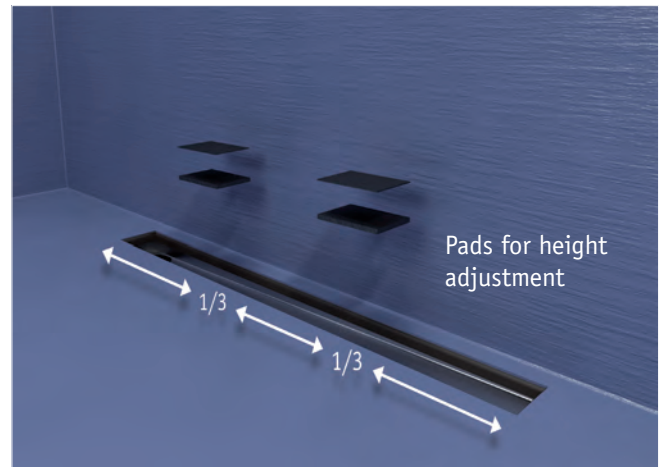


## Installation examples

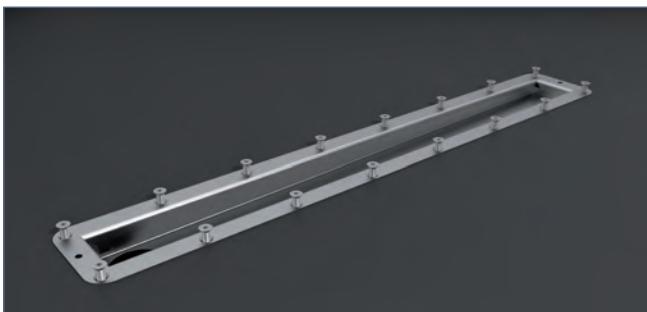
### Tiles



### Tiles and liquid membrane



### Vinyl

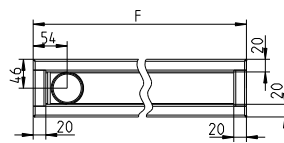
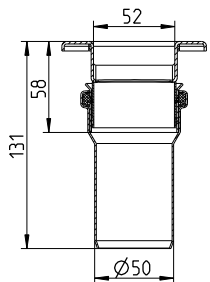


Installation videos available at [www.blucher.com](http://www.blucher.com)



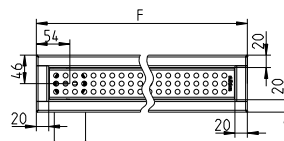
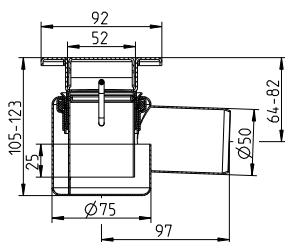
without membrane

**SHOWER CHANNEL WATERLINE TYPE 178**



Type no.	EAN no.	Name	F
178.030.056.20	5705499138108	300	274
178.070.056.20	5705499138429	700	674
178.080.056.20	5705499138115	800	774
178.090.056.20	5705499138122	900	874
178.100.056.20	5705499138139	1000	974

**SHOWER CHANNEL WATERLINE TYPE 178, ITEM SET**

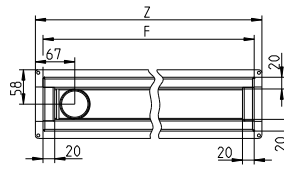
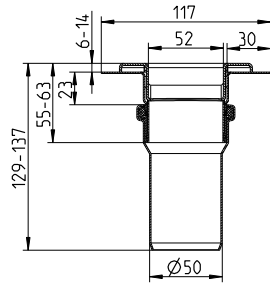


Type no.	EAN no.	Name	F
178.070.056.7A	5705499138306	700	674
178.080.056.7A	5705499138313	800	774
178.090.056.7A	5705499138320	900	874
178.100.056.7A	5705499138337	1000	974

Complete with shower channel, lower part, grating and water trap.

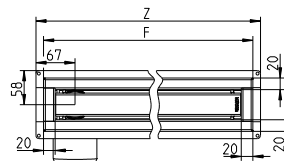
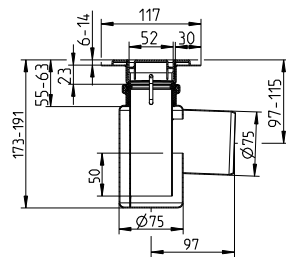
with liquid membrane

**SHOWER CHANNEL WATERLINE TYPE 378**



Type no.	EAN no.	Name	F	Z
378.030.056.20	5705499138368	300	274	300
378.070.056.20	5705499138146	700	674	700
378.080.056.20	5705499138153	800	774	800
378.090.056.20	5705499138160	900	874	900
378.100.056.20	5705499138177	1000	974	1000

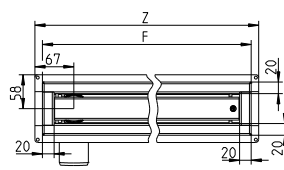
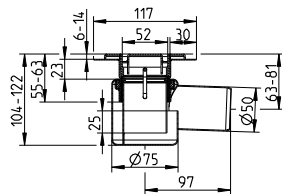
**SHOWER CHANNEL WATERLINE TYPE 378, ITEM SET**



Type no.	EAN no.	Name	F	Z
378.070.056.4B	5705499138184	700	674	700
378.080.056.4B	5705499138191	800	774	800
378.090.056.4B	5705499138207	900	874	900
378.100.056.4B	5705499138214	1000	974	1000

Complete with shower channel, lower part, grating and water trap.

**SHOWER CHANNEL WATERLINE TYPE 378, ITEM SET**



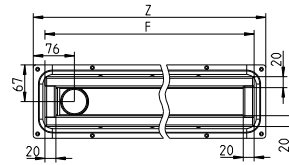
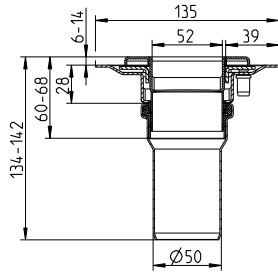
Type no.	EAN no.	Name	F	Z
378.080.056.7B	5705499138344	800	774	800
378.090.056.7B	5705499138351	900	874	900

Complete with shower channel, lower part, grating and water trap.



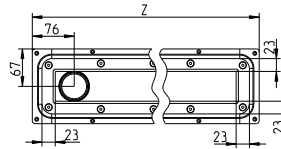
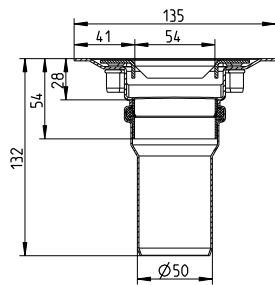
with sheet membrane

SHOWER CHANNEL WATERLINE TYPE 398



Type no.	EAN no.	Name	F	Z
398.070.056.20	5705499138375	700	674	717
398.080.056.20	5705499138382	800	774	817
398.090.056.20	5705499138399	900	874	917
398.100.056.20	5705499138412	1000	974	1017

**SHOWER CHANNEL WATERLINE TYPE 275**

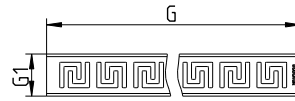
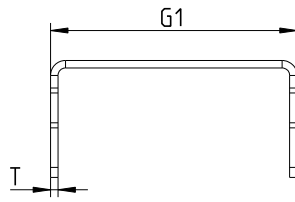


Type no.	EAN no.	Name	Z
275.070.056.20	5705499122527	700	717
275.080.056.20	5705499122534	800	817
275.090.056.20	5705499122541	900	917
275.100.056.20	5705499122558	1000	1017

Required distance from wall to long side of channel = 50mm  
 Required distance from wall to end of channel = 100mm

Gratings

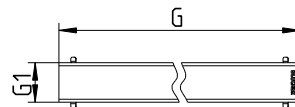
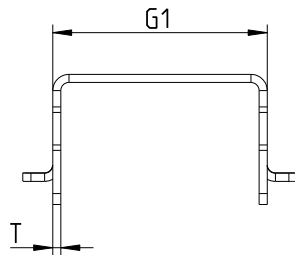
GRATING LINE ATHENS



Type no.	EAN no.	G	G1	T	Max Flow (l/s)
697.005.030	5705499122794	232	50	1.5	0.7
697.005.070	5705499122800	632	50	1.5	0.9
697.005.080	5705499122817	732	50	1.5	0.9
697.005.090	5705499122824	832	50	1.5	0.9
697.005.100	5705499122831	932	50	1.5	0.9

Accurate flow rate depending on type of water trap.

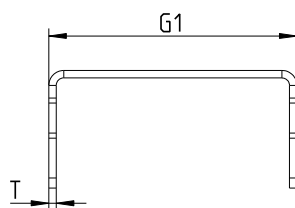
GRATING LINE COPENHAGEN



Type no.	EAN no.	G	G1	T	Max Flow (l/s)
697.004.030	5705499119251	232	40	1.5	0.9
697.004.070	5705499119268	632	40	1.5	1.1
697.004.080	5705499119275	732	40	1.5	1.1
697.004.090	5705499119282	832	40	1.5	1.1
697.004.100	5705499119299	932	40	1.5	1.1

Accurate flow rate depending on type of water trap.

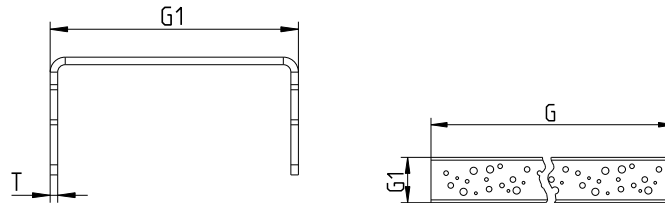
GRATING LINE DETROIT



Type no.	EAN no.	G	G1	T	Max Flow (l/s)
697.006.030	5705499122862	232	50	1.5	0.6
697.006.070	5705499122879	632	50	1.5	0.7
697.006.080	5705499122886	732	50	1.5	0.7
697.006.090	5705499122893	832	50	1.5	0.7
697.006.100	5705499122909	932	50	1.5	0.7

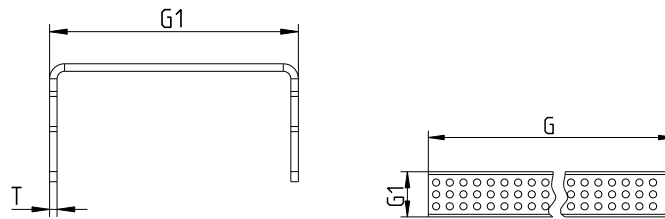
Gratings

GRATING LINE OSLO



Type no.	EAN no.	G	G1	T	Max Flow (l/s)
697.008.030	5705499122725	232	50	1.5	0.4
697.008.070	5705499122732	632	50	1.5	0.5
697.008.080	5705499122749	732	50	1.5	0.5
697.008.090	5705499122756	832	50	1.5	0.5
697.008.100	5705499122763	932	50	1.5	0.5

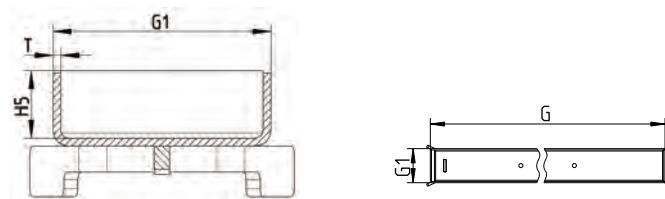
GRATING LINE VIENNA



Type no.	EAN no.	G	G1	T	Max Flow (l/s)
697.003.030	5705499119206	232	50	1.5	0.7
697.003.070	5705499119213	632	50	1.5	0.9
697.003.080	5705499119220	732	50	1.5	0.9
697.003.090	5705499119237	832	50	1.5	0.9
697.003.100	5705499119244	932	50	1.5	0.9

Accurate flow rate depending on type of water trap.

GRATING LINE TOKYO



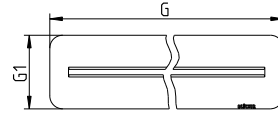
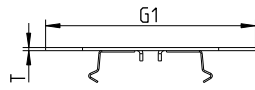
Type no.	EAN no.	G	G1	H5	T	Max Flow (l/s)
697.009.030	5705499126983	224	42	13	1.5	0.8
697.009.070	5705499126990	624	42	13	1.5	0.8
697.009.080	5705499127003	724	42	13	1.5	0.8
697.009.090	5705499127010	824	42	13	1.5	0.8
697.009.100	5705499127027	924	42	13	1.5	0.8

Accurate flow rate depending on type of water trap.

Gratings

**GRATING LINE COPENHAGEN VINYL**

FOR WATERLINE SHOWER CHANNEL FOR VINYL FLOORS

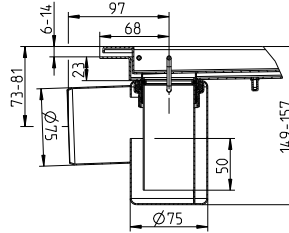
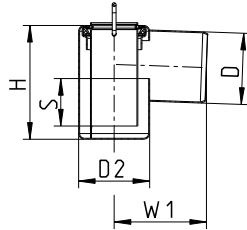


Type no.	EAN no.	G	G1	T	Max Flow (l/s)
697.104.070	5705499122565	685	103	1.5	0.6
697.104.080	5705499122572	785	103	1.5	0.6
697.104.090	5705499122589	885	103	1.5	0.6
697.104.100	5705499122596	985	103	1.5	0.6

Water traps

**WATER TRAP FOR WATERLINE**

TO BE BUILT IN - CANNOT BE RETRO-FITTED

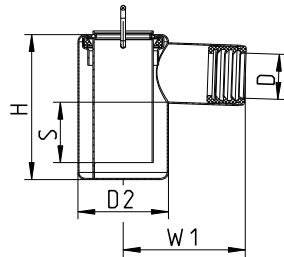


Type no.	EAN no.	D	H	S	W1	D2	Max Flow (l/s)
510.000.075	5705499120011	75	120	50	97	75	0.8

Accurate flow rate depending on type of grating.

**WATER TRAP FOR WATERLINE**

TO BE BUILT IN - CANNOT BE RETRO-FITTED

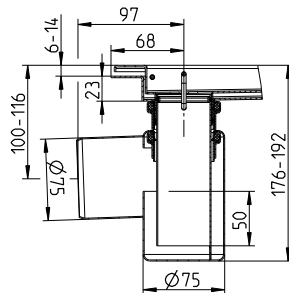
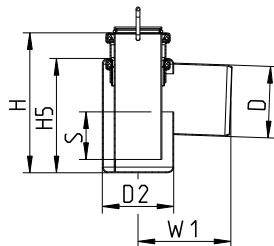


Type no.	EAN no.	D	H	S	W1	D2	Max Flow (l/s)
510.000.059	5705499126907	50	120	50	101	75	0.7

Accurate flow rate depending on type of grating.  
Adaptor for D=1½" included

**WATER TRAP FOR WATERLINE, HIGH MODEL**

TO BE BUILT IN - CANNOT BE RETRO-FITTED



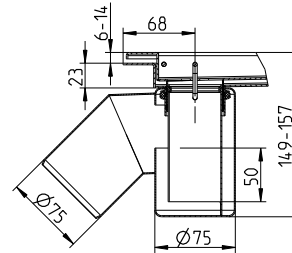
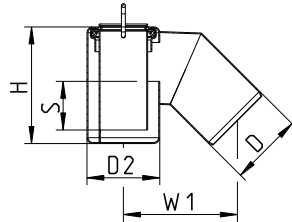
Type no.	EAN no.	D	H	H5	S	W1	D2	Max Flow (l/s)
510.002.075	5705499123067	75	147	120	50	97	75	0.8

Accurate flow rate depending on type of grating.

Water traps

**WATER TRAP 45° FOR WATERLINE**

TO BE BUILT IN - CANNOT BE RETRO-FITTED

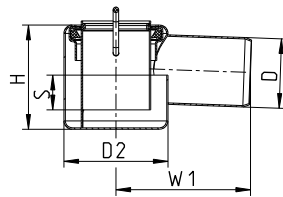


Type no.	EAN no.	D	H	S	W1	D2	Max Flow (l/s)
510.003.075	5705499123074	75	120	50	117	75	0.8

Accurate flow rate depending on type of grating.

**WATER TRAP FOR WATERLINE, LOW MODEL**

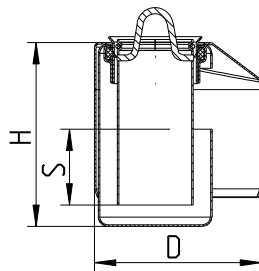
TO BE BUILT IN - CANNOT BE RETRO-FITTED



Type no.	EAN no.	D	H	S	W1	D2	Max Flow (l/s)
510.025.050	5705499134711	50	75	25	97	75	0.6

**WATER TRAP FOR WATERLINE, VERTICAL MODEL**

TO BE BUILT IN - CANNOT BE RETRO-FITTED

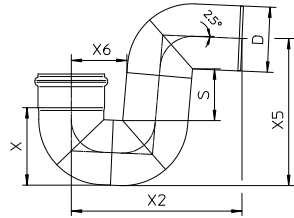


Type no.	EAN no.	D	H	S	Max Flow (l/s)
510.004.110	5705499138535	110	121	50	0.9

Accurate flow rate depending on type of grating.

Water traps

P-TRAP 87.5° TYPE 525.090



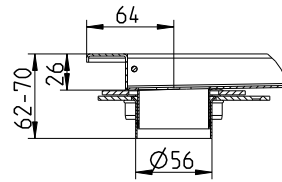
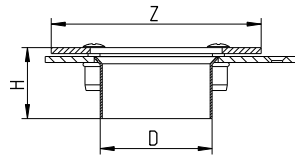
Type no.	EAN no.	D	S	X	X2	X5	X6	Max Flow (l/s)
525.090.050 S	5705499101461	50	74	67	175	145	60	1.7

Accurate flow rate depending on installation.



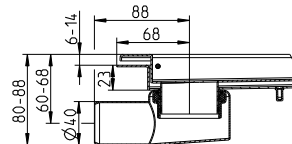
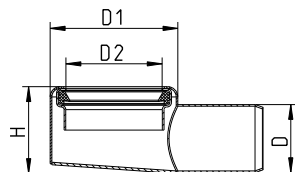
Others

FLANGE FOR WATERLINE



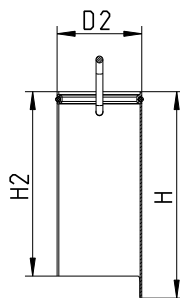
Type no.	EAN no.	D	Z	H
326.005.000	5705499121513	56	105x105	36

LOWER PART FOR WATERLINE



Type no.	EAN no.	D	D1	H	D2
620.300.028	5705499120288	40	75	51	56

STAND PIPE FOR WATERLINE WATER TRAP

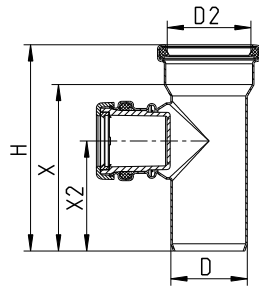


Type no.	EAN no.	H	H2	D2
620.300.021	5705499120035	122	109	50

Others

**CONNECTING PIECE FOR WATERLINE**

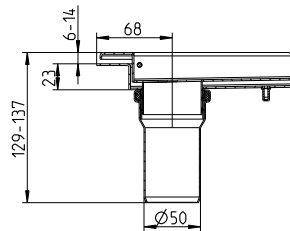
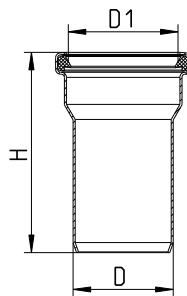
WITH SIDE INLET



Type no.	EAN no.	D	H	D2	X	X2
620.300.036	5705499123692	50	135	56	109	72

Side inlet Ø32mm fits Ø40mm as well.

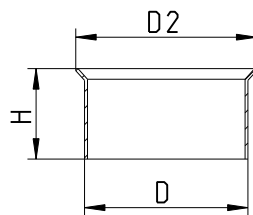
**CONNECTING PIECE FOR WATERLINE**



Type no.	EAN no.	D	D1	H
620.300.022	5705499120042	50	56	100

**CONNECTING PIECE FOR WATERLINE**

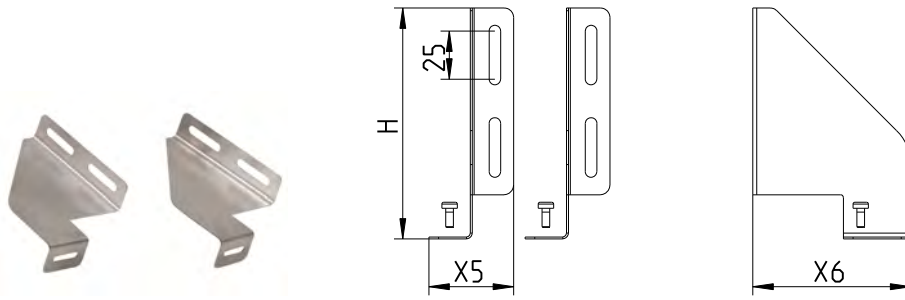
FOR TYPE 17X



Type no.	EAN no.	D	H	D2
620.300.023	5705499120059	56	31	62

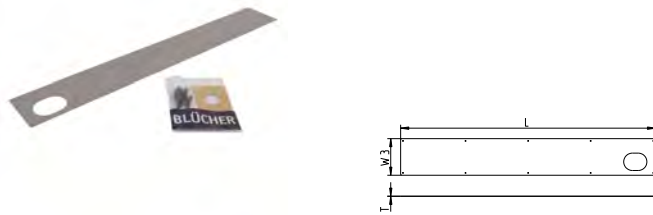
Others

**MOUNTING BRACKETS FOR WATERLINE**



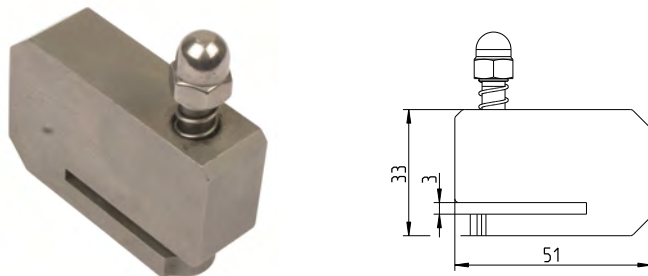
Type no.	EAN no.	H	X5	X6
620.300.037	5705499123814	120	44	82

**MOUNTING SET FOR WATERLINE**  
FOR WOODEN SUBFLOOR



Type no.	EAN no.	L	W3	T
379.011.000	5705499127836	1100	158	0.7

**VINYL HOLE PUNCHING TOOL**



Type no.	EAN no.
001.200.002	5705499128239

**BLÜCHER® EuroPipe**

**BLÜCHER® Channel**

**BLÜCHER® Drain**

**BLÜCHER®**

A **WATTS** Brand

T: +45 99 92 08 00 • [export@blucher.com](mailto:export@blucher.com) • [blucher.com](http://blucher.com)

© 2018 blucher.com